

N-128-J
WHITEHALL TWP

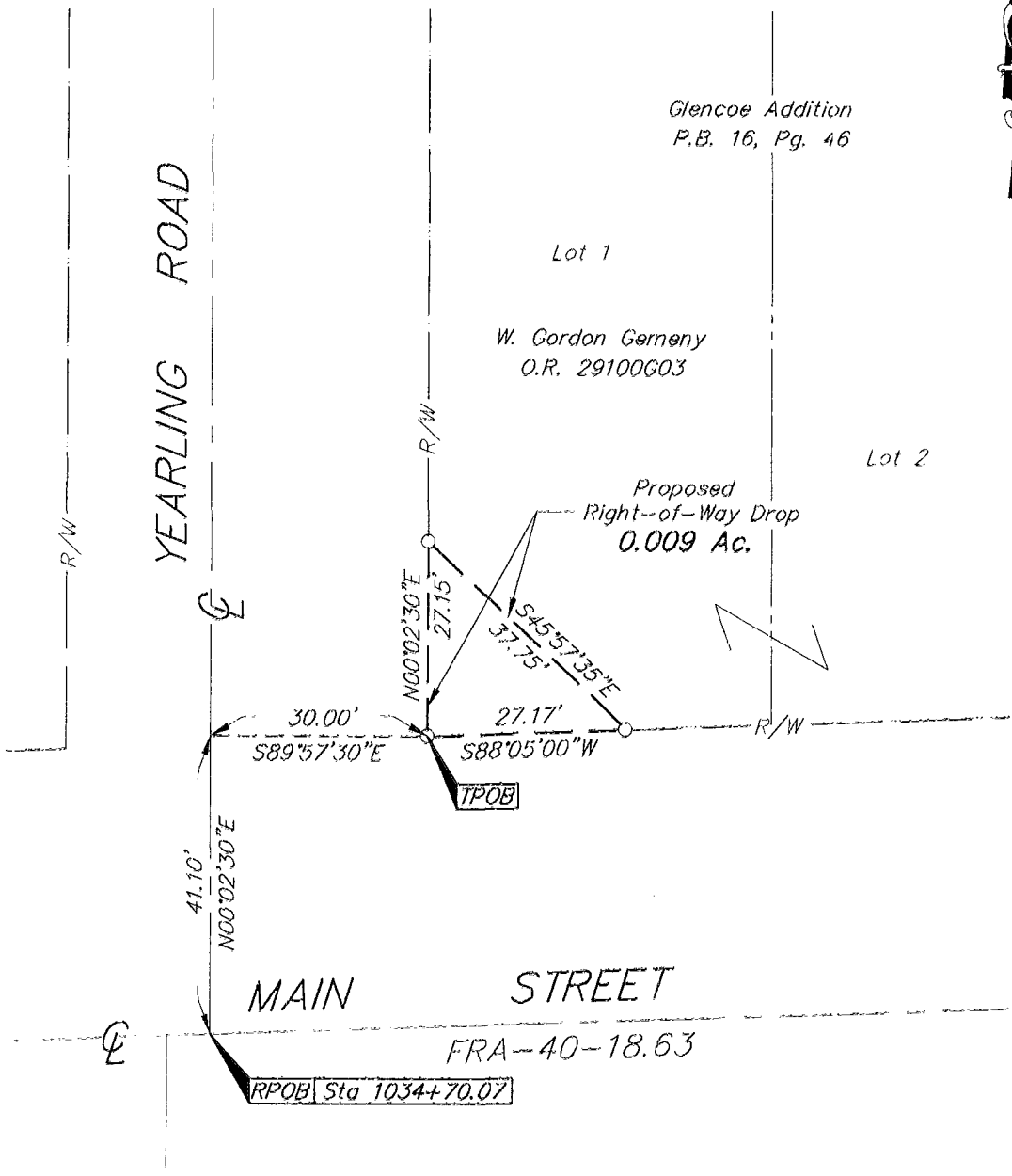


PROPOSED RIGHT-OF-WAY DROP
LOCATED IN
SECTION 16, TOWNSHIP 12, RANGE 21
REFUGEE LANDS
CITY OF WHITEHALL, FRANKLIN COUNTY, OHIO

SCALE 1" = 20'

MAY 9, 2001

85852125
PROJECT: 2001503.011.DWG\01503\FD16.DWG - 0 YREFS. - PLOTTED BY JBUSHBY - May 09, 2001 - 10:49 AM



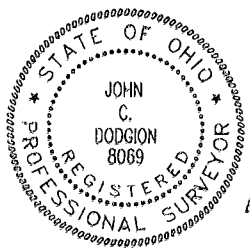
- = MON. FND.
- = I.P. FND.
- = I.P. SET
- = MAG. NAIL FND.
- = MAG. NAIL SET
- ▲ = R.R. SPK. FND.
- △ = R.R. SPK. SET
- ◆ = P.K. NAIL FND.

I.P.S Set are 13/16" I.D. Iron pipe w/ cap inscribed EMH&I, Inc.

Bearings hereon are based on 500' 02' 30"W for a portion of the centerline of Yearling Road as shown on the City of Whitehall Street Improvement Plan No. 196 and dated 1962.



GRAPHIC SCALE (IN FEET)



By John C. Dodgion
Professional Surveyor No. 8069