

S. D. POMEROY
AND ASSOCIATES, INC.

CONSULTING ENGINEERS and SURVEYORS

6877 N. High St. • Worthington, Ohio 43085 • (614) 885-2498

08357225

PLAT of 2.217 Acre Tract and 8.278 Acre Tract
SECTION 4, TOWNSHIP 1 NORTH, RANGE 16 WEST, U.S. MILITARY LANDS

CITY of COLUMBUS, FRANKLIN COUNTY, OHIO

DATE: 2 JULY 1992

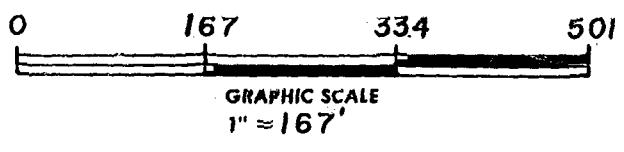
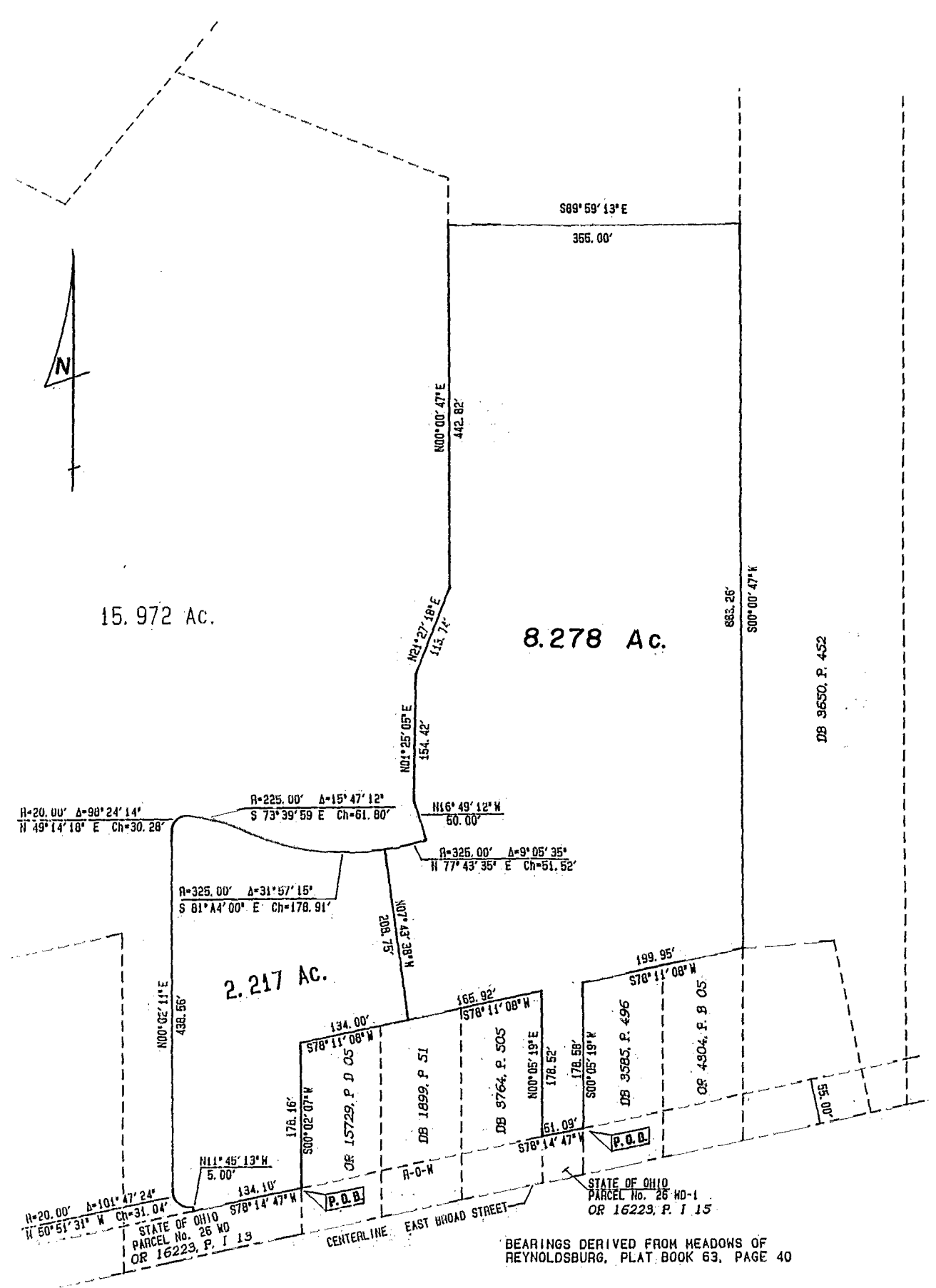
TO: EPLER DEVELOPMENT Co.

● = IRON PIN FOUND

○ = IRON PIN SET

PLAT BOOK _____ PAGE _____

DEED BOOK _____ PAGE _____



BEARINGS DERIVED FROM MEADOWS OF REYNOLDSBURG, PLAT BOOK 63, PAGE 40

S.D. POMEROY AND ASSOCIATES, INC.

By: *Chris Y. Scheeres, P.S.*
CHRIS Y. SCHEERES, P.S. No. 7305

JEFFERSON TWP
O-10-H