

88607225

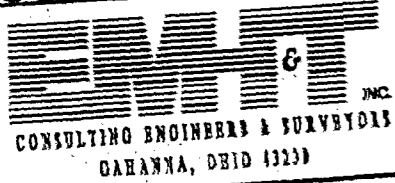
SPLIT

515-222043

88607225

C-40-H

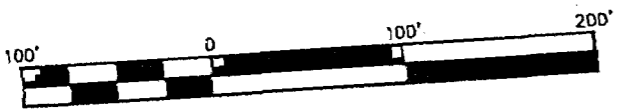
JEFFERSON TWP.



SURVEY OF ACREAGE PARCEL
LOCATED IN
QUARTER TOWNSHIP 5, TOWNSHIP 1, RANGE 16
UNITED STATES MILITARY LANDS
CITY OF COLUMBUS, FRANKLIN COUNTY, OHIO

MAY 15, 2001

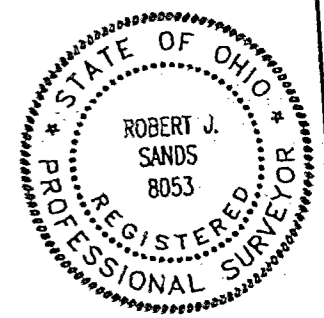
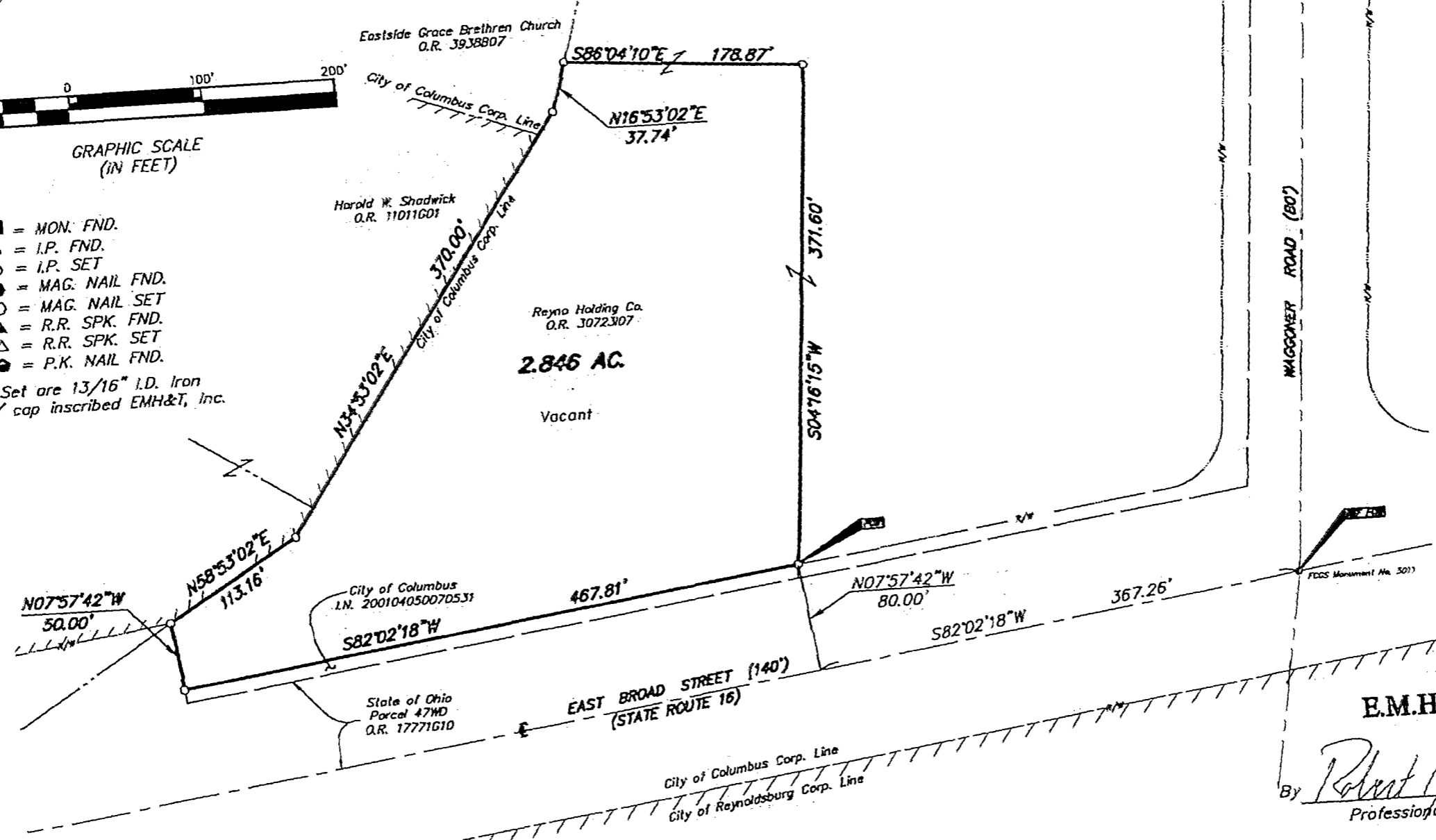
SCALE 1" = 100'



GRAPHIC SCALE
(IN FEET)

- = MON. FND.
- = I.P. FND.
- = I.P. SET
- = MAG. NAIL FND.
- = MAG. NAIL SET
- ▲ = R.R. SPK. FND.
- △ = R.R. SPK. SET
- ⊙ = P.K. NAIL FND.

I.P.S. Set are 13/16" I.D. Iron pipe w/ cap inscribed EMH&T, Inc.



E.M.H.&T. INC.

By Robert J. Sands 5/15/01
Professional Surveyor No. 8053

BASIS OF BEARINGS:
Bearings shown hereon are based on a series of GPS observations made between Franklin County Engineer's Monuments FRANK 48 and FRANK 148 which have a bearing of N 16°48'42" E.