



88357250

SURVEY OF ACREAGE PARCELS
 LOCATED IN
 QUARTER TOWNSHIP 4, TOWNSHIP 1, RANGE 16
 UNITED STATES MILITARY LANDS
 CITY OF COLUMBUS, FRANKLIN COUNTY, OHIO

0-40-E
 JEFFERSON TWP.

SCALE 1" = 30'

JULY 10, 2002

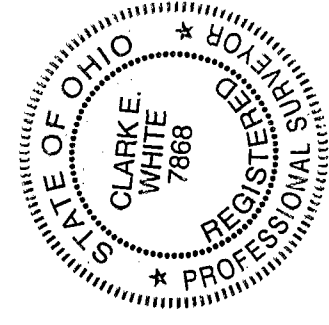
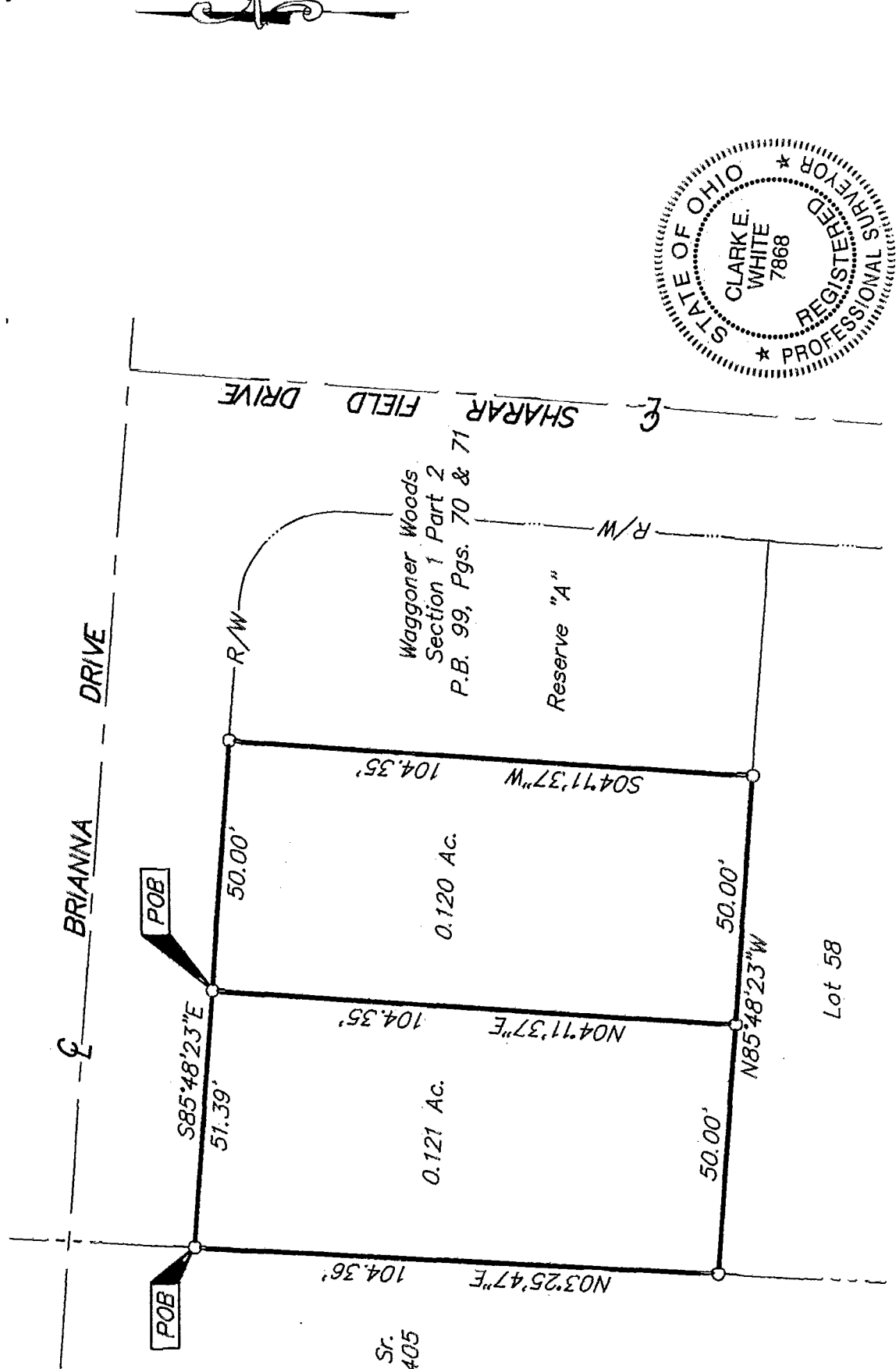
Joseph J. Recchie Sr.
 I.N. 199809160235405

- = MON. FND.
- = I.P. FND.
- = I.P. SET
- ◐ = MAG. NAIL FND.
- ◑ = MAG. NAIL SET
- ▲ = R.R. SPK. FND.
- △ = R.R. SPK. SET
- ◆ = P.K. NAIL FND.

I.P.S Set are 1 3/16" I.D. Iron pipe w/ cap inscribed EMHT INC



GRAPHIC SCALE
 (IN FEET)



BASIS OF BEARINGS: Bearings are based on the same meridian as the bearings shown on the subdivision plat entitled "The Woods at Jefferson Section 1", of record in Plat Book 84, Pages 71 and 72, Recorder's Office, Franklin County, Ohio.

By *Clarke White*
 Professional Surveyor No. 7868