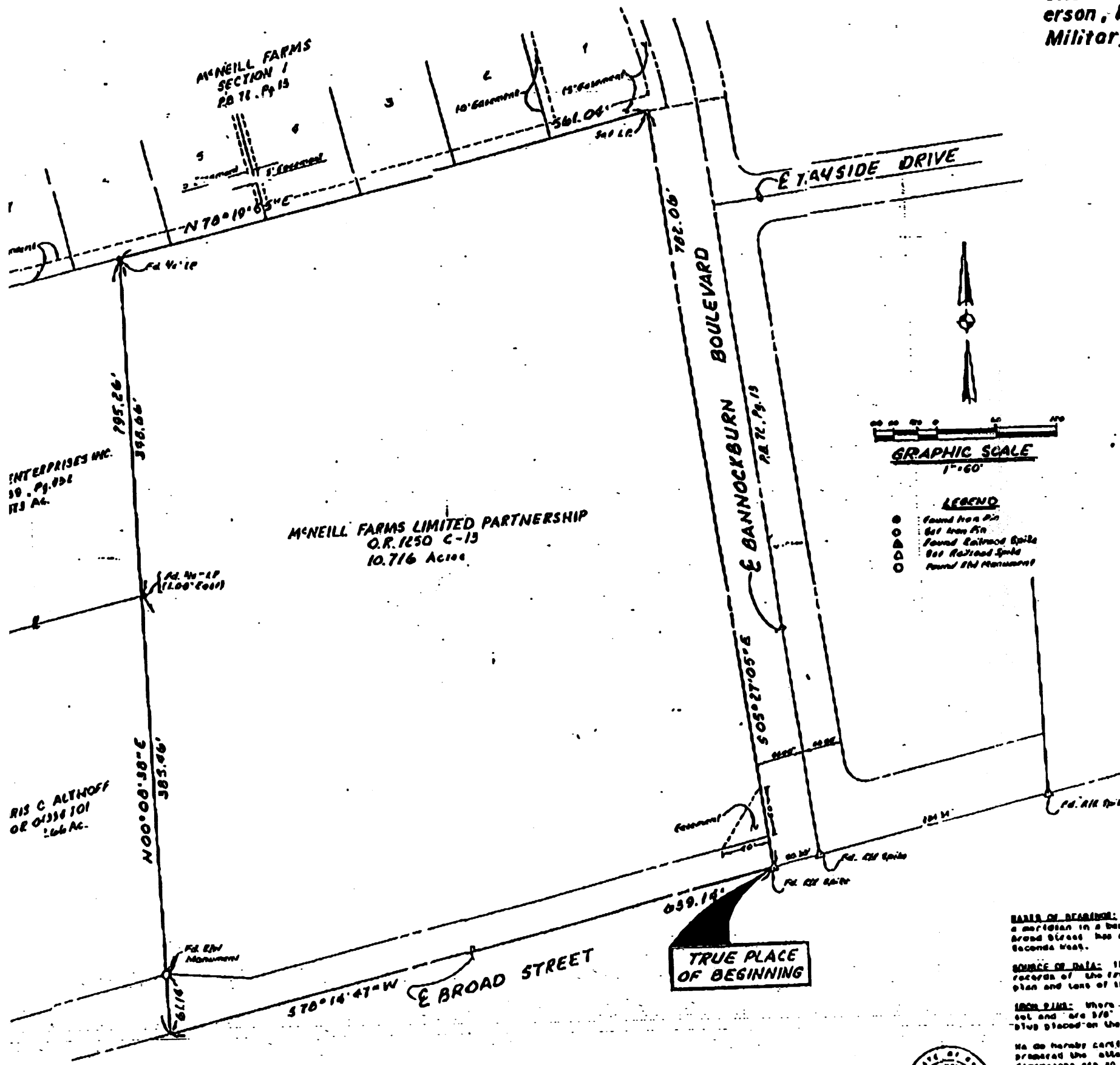


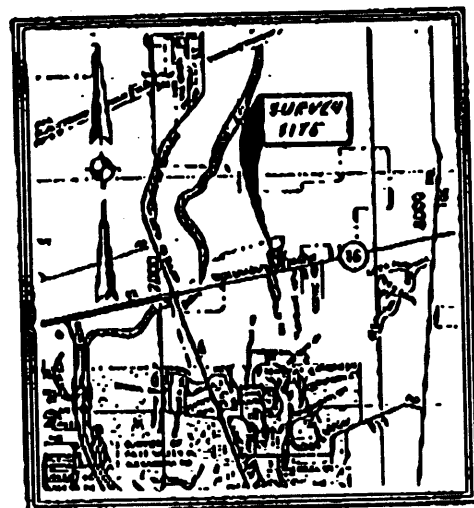
SURVEY PLAT OF 10.716 ACRES

Situated in the State of Ohio, County of Franklin, Township of Jefferson, being located in Section 4, Township 1, Range 16, United States Military Lands.

0-406
 NOV 09 '90 15:27 CORPORATE OFFICES



- LEGEND**
- Found from Pin
 - Set from Pin
 - Found Railroad Spike
 - Set Railroad Spike
 - Found Old Monument



PRINTED
 DATE 4/24/90
 PRELIMINARY

BASE OF BEARING: The bearings shown on this plat are based on a meridian in a bearing system in which the centerline of East Broad Street has a bearing of South 78 Degrees, 14 Minutes, 41 Seconds West.

SOURCE OF DATA: The source of recorded survey data are the records of the Franklin County Ohio Recorder referenced in the plan and text of this plat.

IRON PINS: Where indicated, unless otherwise noted, are to be set and are 3/8" diameter, thirty (30) inches long with a plastic plug placed on the top bearing the name Blackhall - 9300.

We do hereby certify that we have surveyed the above premises, prepared the attached plat, and that said plat is correct. All dimensions are in feet and decimal parts thereof. Dimensions shown on curves are chord measurements.



By _____
 Registered Surveyor No. 5204

BISCHOFF & ASSOCIATES, INC.
 Consulting Engineers
 3425 Grant Avenue
 CLEVELAND, OHIO 44114