

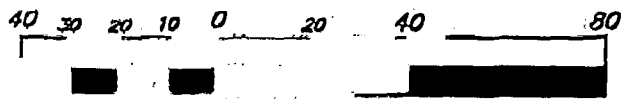


0.148 ACRE & 0.042 ACRE TRACTS
LOCATED IN
QUARTER TOWNSHIP 4, TOWNSHIP 1, RANGE 16
UNITED STATES MILITARY LANDS
CITY OF COLUMBUS, FRANKLIN COUNTY, OHIO

SCALE 1" = 40'

MAY 10, 1996

RECORD REFERENCES CONDO P.B. 68, PGS. 45-47

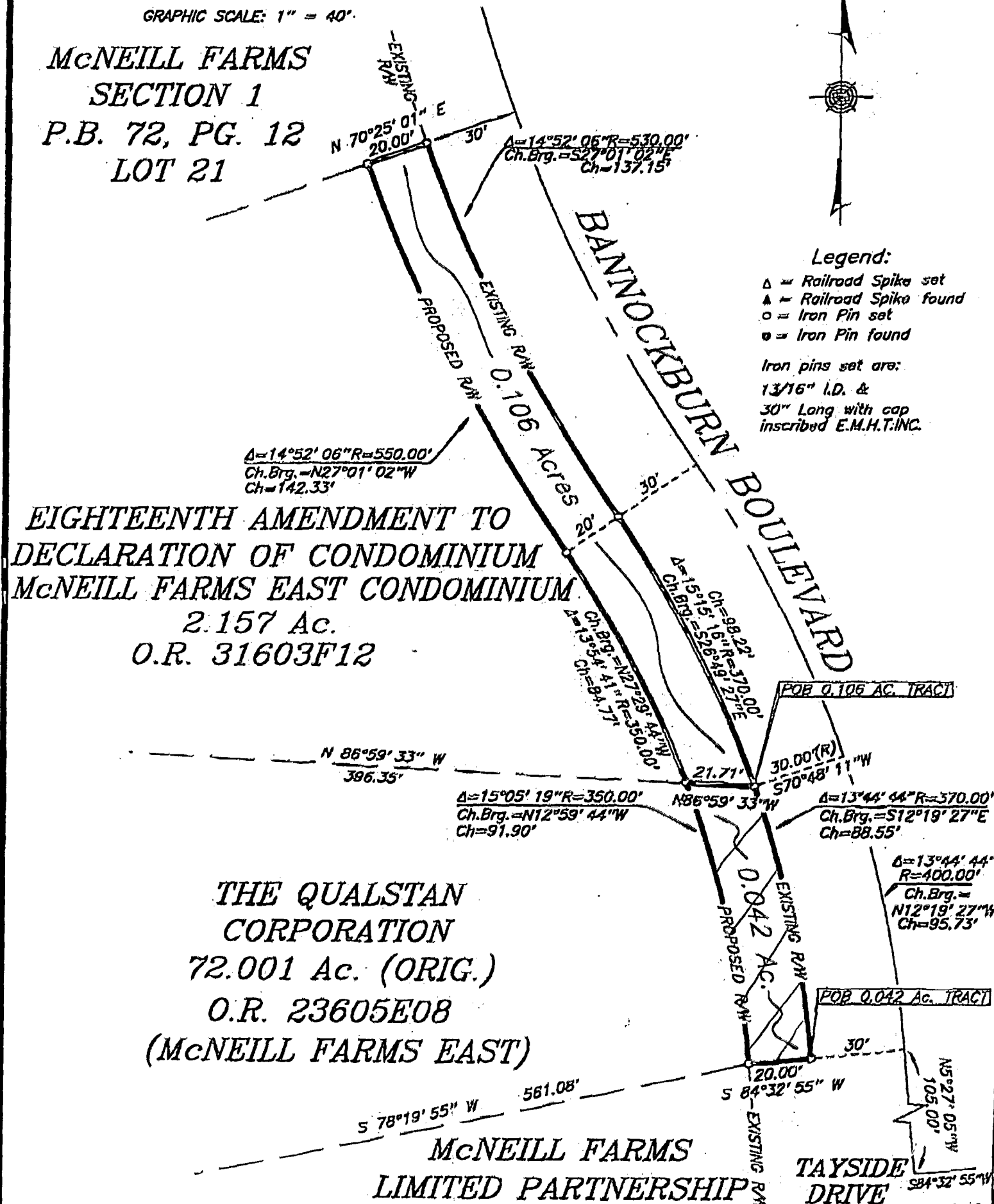


GRAPHIC SCALE: 1" = 40'

McNEILL FARMS
SECTION 1
P.B. 72, PG. 12
LOT 21



Legend:
△ = Railroad Spike set
▲ = Railroad Spike found
○ = Iron Pin set
● = Iron Pin found
Iron pins set are:
1 3/16" I.D. &
30" Long with cap
inscribed E.M.H.T. INC.



EIGHTEENTH AMENDMENT TO
DECLARATION OF CONDOMINIUM
McNEILL FARMS EAST CONDOMINIUM
2.157 Ac.
O.R. 31603F12

THE QUALSTAN
CORPORATION
72.001 Ac. (ORIG.)
O.R. 23605E08
(McNEILL FARMS EAST)

McNEILL FARMS
LIMITED PARTNERSHIP
O.R. 12502C13

TAYSIDE
DRIVE

Basis of Bearing for this drawing
is S 84°32'55" W for the centerline
of Tayside Drive as the same is shown
on the plat entitled McNeill Farms
Section 1 of record in P.B. 72, PG. 12



E.M.H. & T. INC.

Handwritten signature and date: *Jeff Miller* 5-10-96

Vertical handwritten text: 188 107 225