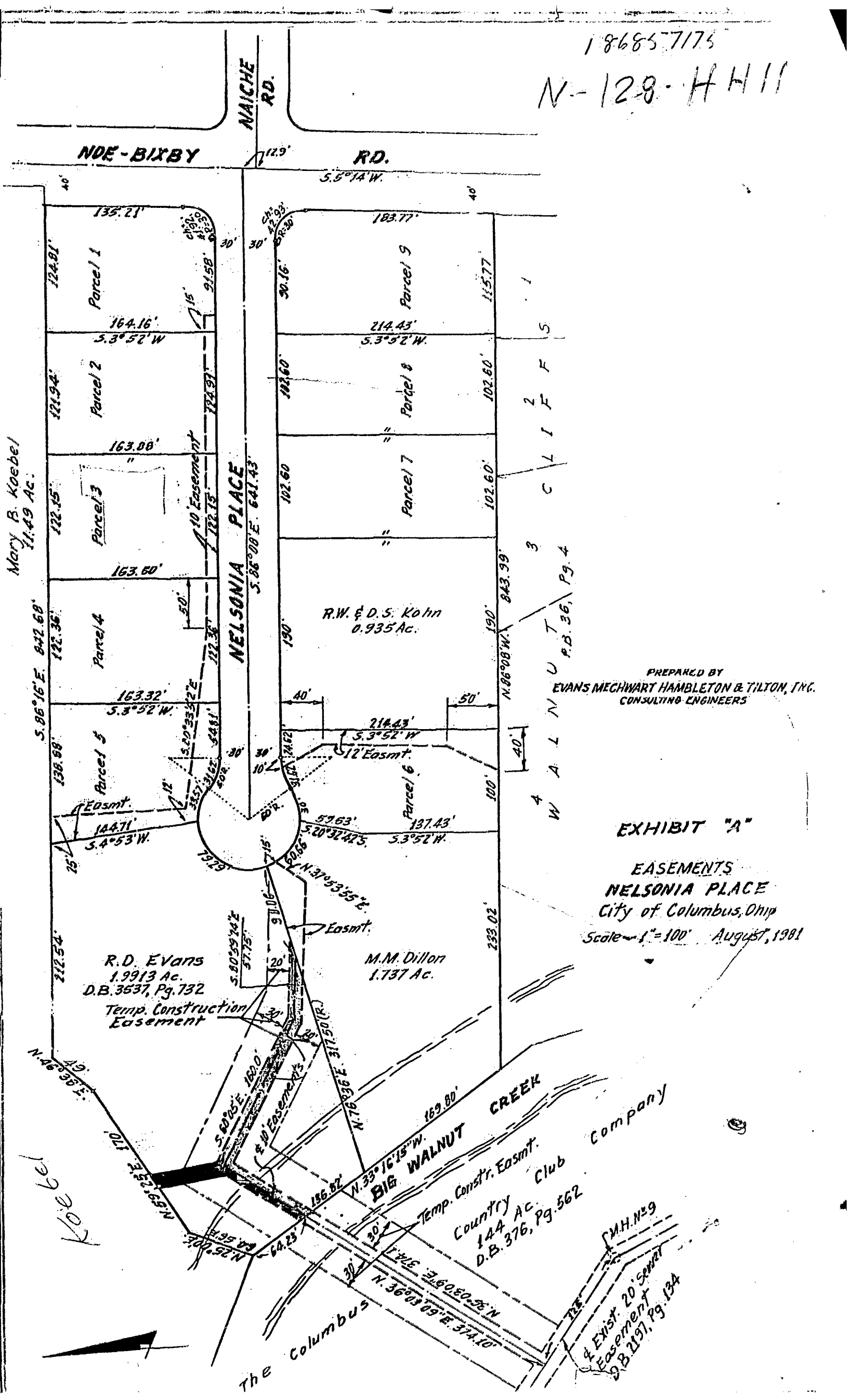


18685-7175  
N-129-HH11



Mary B. Koebel  
11.49 Ac.

R.D. Evans  
1.9913 Ac.  
D.B. 3537, Pg. 732  
Temp. Construction  
Easement

M.M. Dillon  
1.737 Ac.

R.W. & D.S. Kohn  
0.935 Ac.

PREPARED BY  
EVANS MECHWART HAMBLETON & TILTON, INC.  
CONSULTING ENGINEERS

EXHIBIT "A"  
EASEMENTS  
NELSONIA PLACE  
City of Columbus, Ohio  
Scale 1" = 100' August, 1981

W A L N U T  
P.B. 36, Pg. 4

C L I F F S

Koebel

Country Club Company  
Temp. Constr. Easmt.  
144 Ac.  
D.B. 376, Pg. 562

PMH#29  
& Exist. 20' Sewer  
Easement  
D.B. 2197, Pg. 134

The Columbus