

**SURVEY OF ACREAGE PA-CEL**  
**LOCATED IN QUARTER TOWNSHIP 3, TOWNSHIP 1, RANGE 16,**  
**UNITED STATES MILITARY LANDS**  
**CITY OF COLUMBUS, FRANKLIN COUNTY, OHIO**

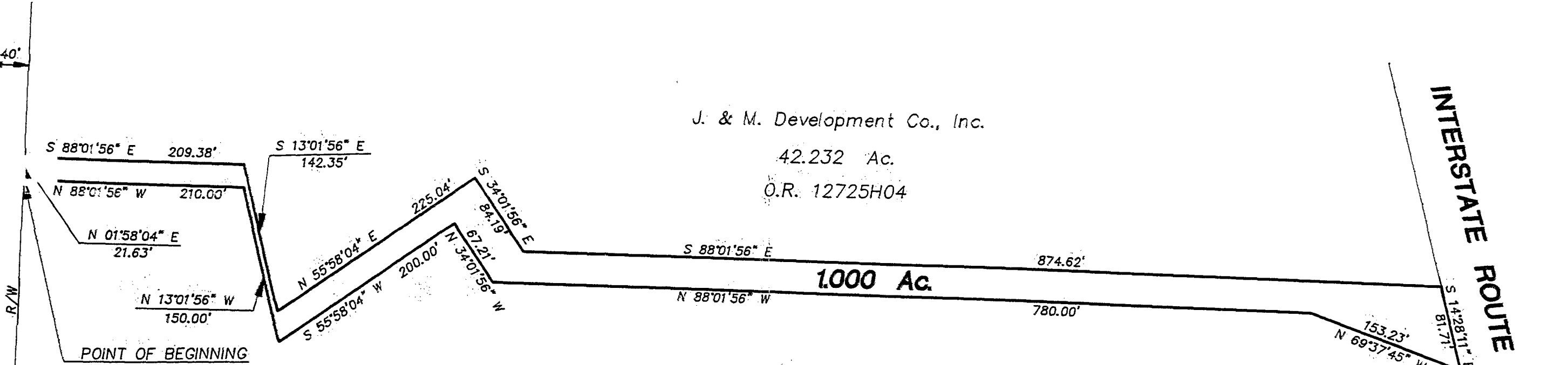
**Q CARDINAL PARK DRIVE (80')**

**INTERSTATE ROUTE 270**  
 Limited Access R/W

J. & M. Development Co., Inc.  
 42.232 Ac.  
 O.R. 12725H04

Bel Air Limited  
 26.000 Ac.

Surveyed & Platted  
 By  
**EVANS, MECHWART, HAMBLETON, & TILTON INC.**  
 CONSULTING ENGINEERS AND SURVEYORS  
 170 MILL STREET  
 GAHANNA, OHIO 43230  
 614/471-5150



NOTE:  
 The bearings shown hereon are based on the same meridian as the deed of record in Deed Book 3615, Page 478.



By Thomas D. Sibbalds  
 Thomas D. Sibbalds  
 Registered Surveyor No. 5908  
 SCALE 1" = 100'      NOVEMBER 19, 1992

