

# EVANS MECHWART HAMBLETON & TILTON, INC.

186107200

CONSULTING ENGINEERS — SURVEYORS  
GAHANNA, OHIO

0-101-C

SURVEY OF 2.000 ACRE TRACT  
LOCATED IN HALF SECTION 4, TOWNSHIP 12, RANGE 21  
REFUGEE LANDS  
CITY OF WHITEHALL, FRANKLIN COUNTY, OHIO

SCALE 1" = 80'

JANUARY 21, 1976

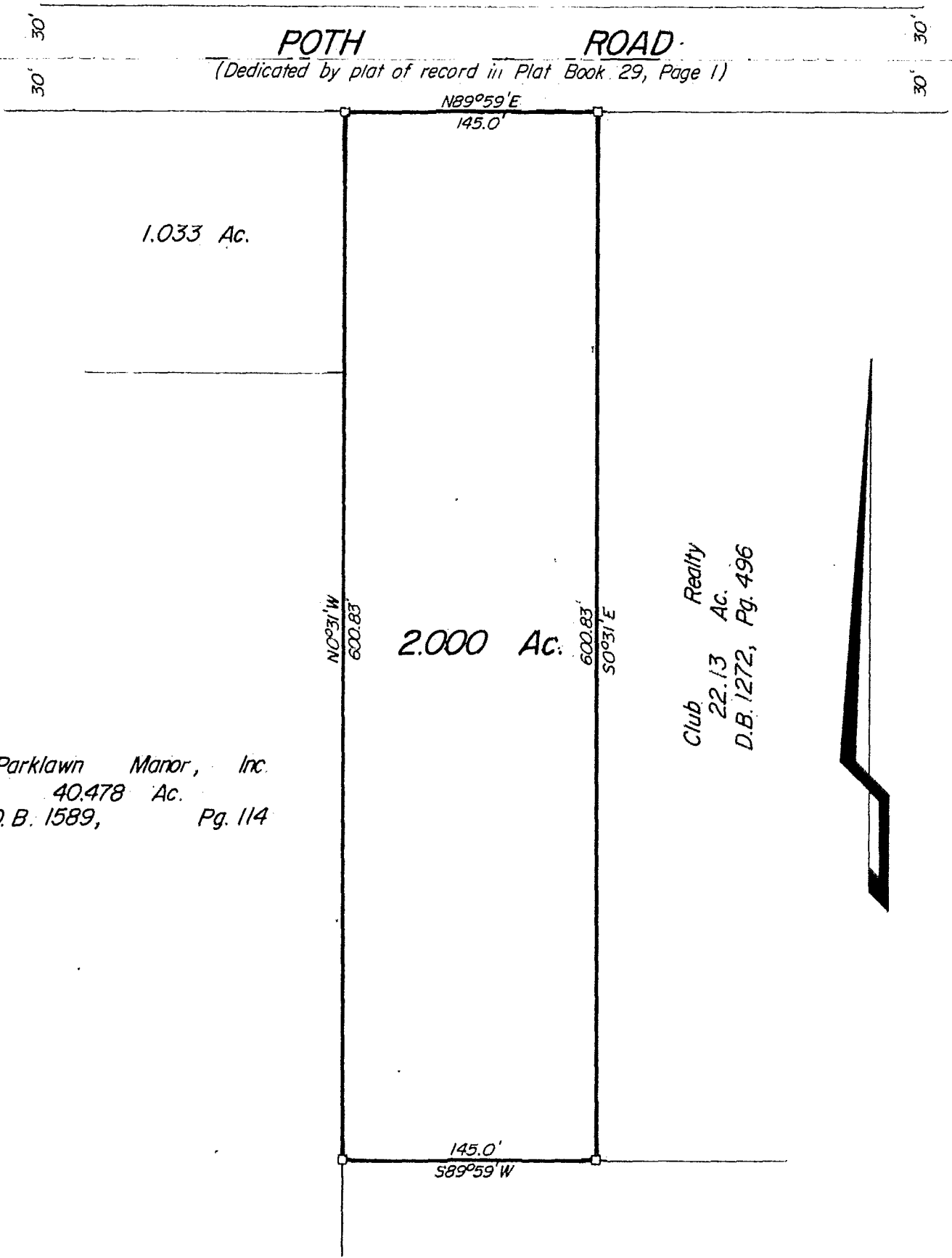
DEED BOOK 1272 PAGE 4

☐ = CONC. MONUMENT

PLAT BOOK PAGE

030  
1976  
120  
3590

0-101-C



Parklawn Manor, Inc.  
40.478 Ac.  
D.B. 1589, Pg. 114

Club Realty  
22.13 Ac.  
D.B. 1272, Pg. 496

We hereby certify that the foregoing plat was prepared from an actual survey of the premises and shows the location of the boundaries.

EVANS MECHWART HAMBLETON & TILTON, INC.

BY: *[Signature]*  
Registered Surveyor No. 5485