

# BAUER, BOROWITZ & MERCHANT, INC.

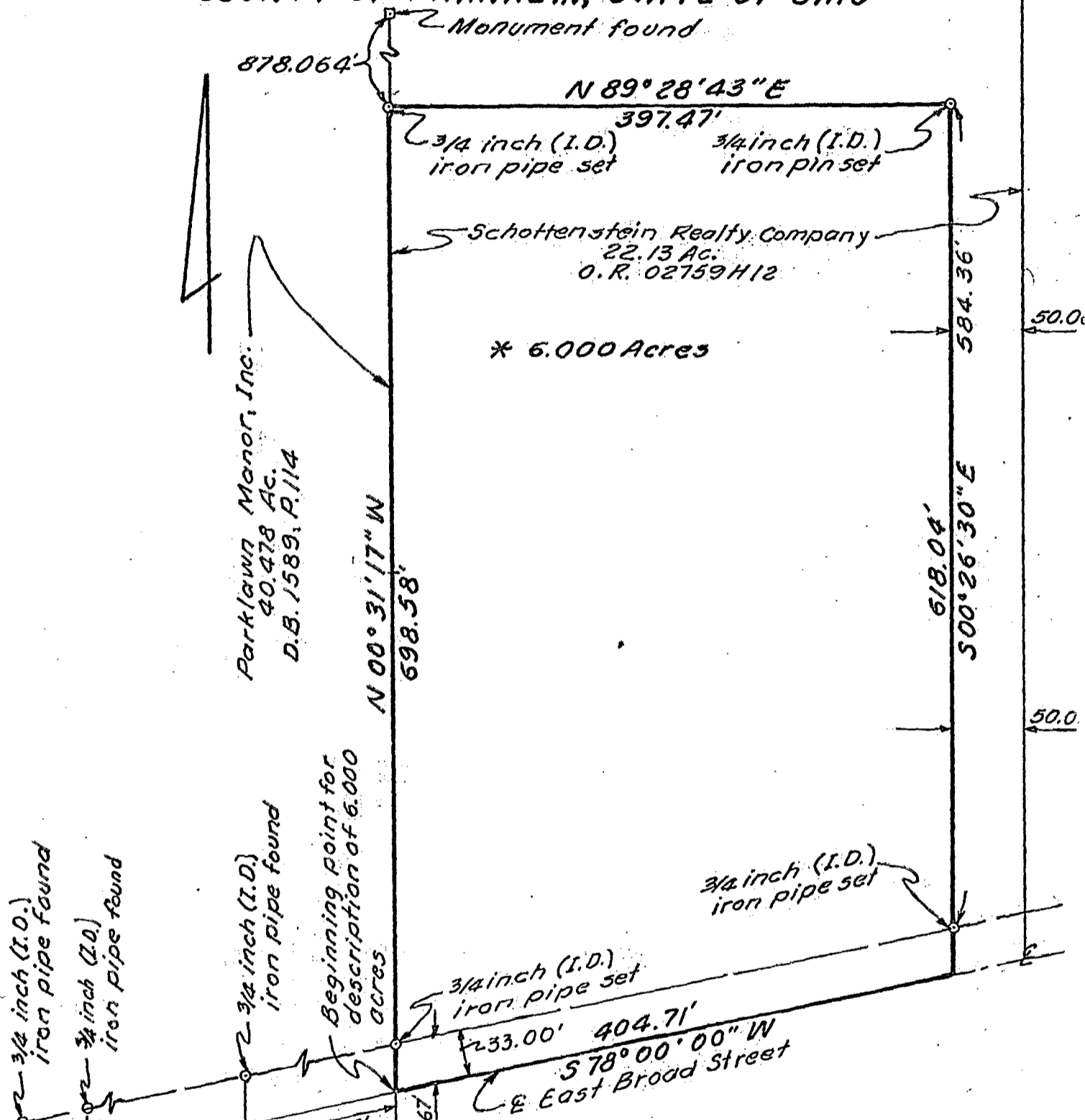
CONSULTING ENGINEERS

2607 1/2 NORTH HIGH STREET

186107200  
186107115

COLUMBUS, OHIO 43202

**BOUNDARY SURVEY MAP OF 6.000 ACRES OF LAND LOCATED ON THE NORTHERLY SIDE OF EAST BROAD STREET AND EAST OF YEARLING ROAD IN THE CITY OF WHITEHALL, COUNTY OF FRANKLIN, STATE OF OHIO**



\* 6.000 Acres

Parklawn Manor, Inc.  
40.478 Ac.  
D.B. 1589, P. 114

Schottenstein Realty Company  
22.13 Ac.  
O.R. 02759 H12

Beginning point for  
description of 6.000  
acres

3/4 inch (I.D.)  
iron pipe set

3/4 inch (I.D.)  
iron pipe set

East Broad Street

\* Situated in the State of Ohio, County of Franklin, City of Whitehall, being in Half Section 4, Township 12, Range 21, Refugee Lands, containing 6.000 acres of land, more or less, said 6.000 acres being out of that 22.13 acre tract of land described in the deed to Schottenstein Realty Company, of record in Official Record 02759 H12, Recorder's Office, Franklin County, Ohio.

We hereby certify that this map was prepared from information obtained from actual field surveys of the premises conducted by Bauer, Borowitz & Merchant, Inc. in April of 1984 and on May 7, 1984.

All of the survey markers noted on this map as set were set by Bauer, Borowitz & Merchant, Inc. and were in place on May 7, 1984.

The bearings shown on this map are based on an assumed meridian.

By: William W. Merchant  
William W. Merchant  
Registered Surveyor No. 4843

Scale: 1" = 100' Order No. 895-84  
May 7, 1984