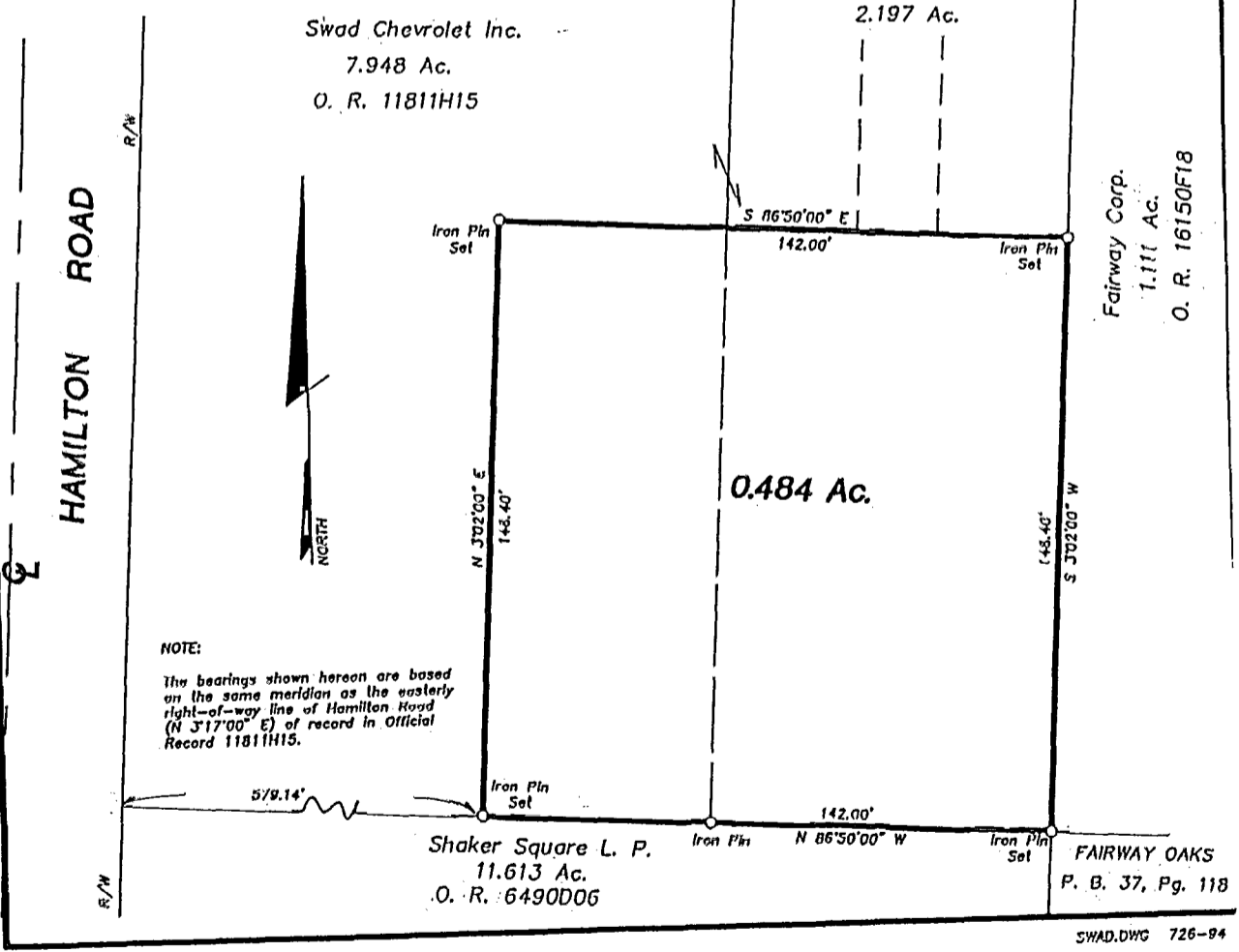
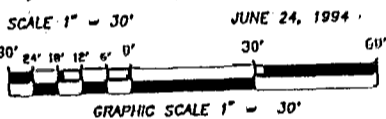


SURVEY OF ACREAGE PARCELS
 LOCATED IN HALF SECTION 4, TOWNSHIP 12, RANGE 21,
 REFUGEE LANDS
 CITY OF WHITEHALL, FRANKLIN COUNTY, OHIO

A-2

Surveyed & Plotted
 By
EVANS, MECHWART, HAMBLETON, & TILTON INC.
 CONSULTING ENGINEERS AND SURVEYORS
 170 MILL STREET
 GAHANNA, OHIO 43230
 614/471-5150

By *Thomas D. Sibbalds*
 Thomas D. Sibbalds
 Registered Surveyor No. 5908



NOTE:
 The bearings shown hereon are based
 on the same meridian as the easterly
 right-of-way line of Hamilton Road
 (N 3°17'00" E) of record in Official
 Record 11811H15.

FAIRWAY OAKS
 P. B. 37, Pg. 118

SWAD.DWG 726-94

186357175

N-129