

HOCKADEN AND ASSOCIATES, INC.

CONSULTING ENGINEERS

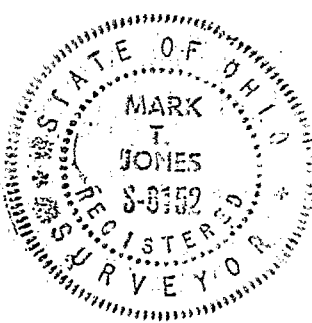
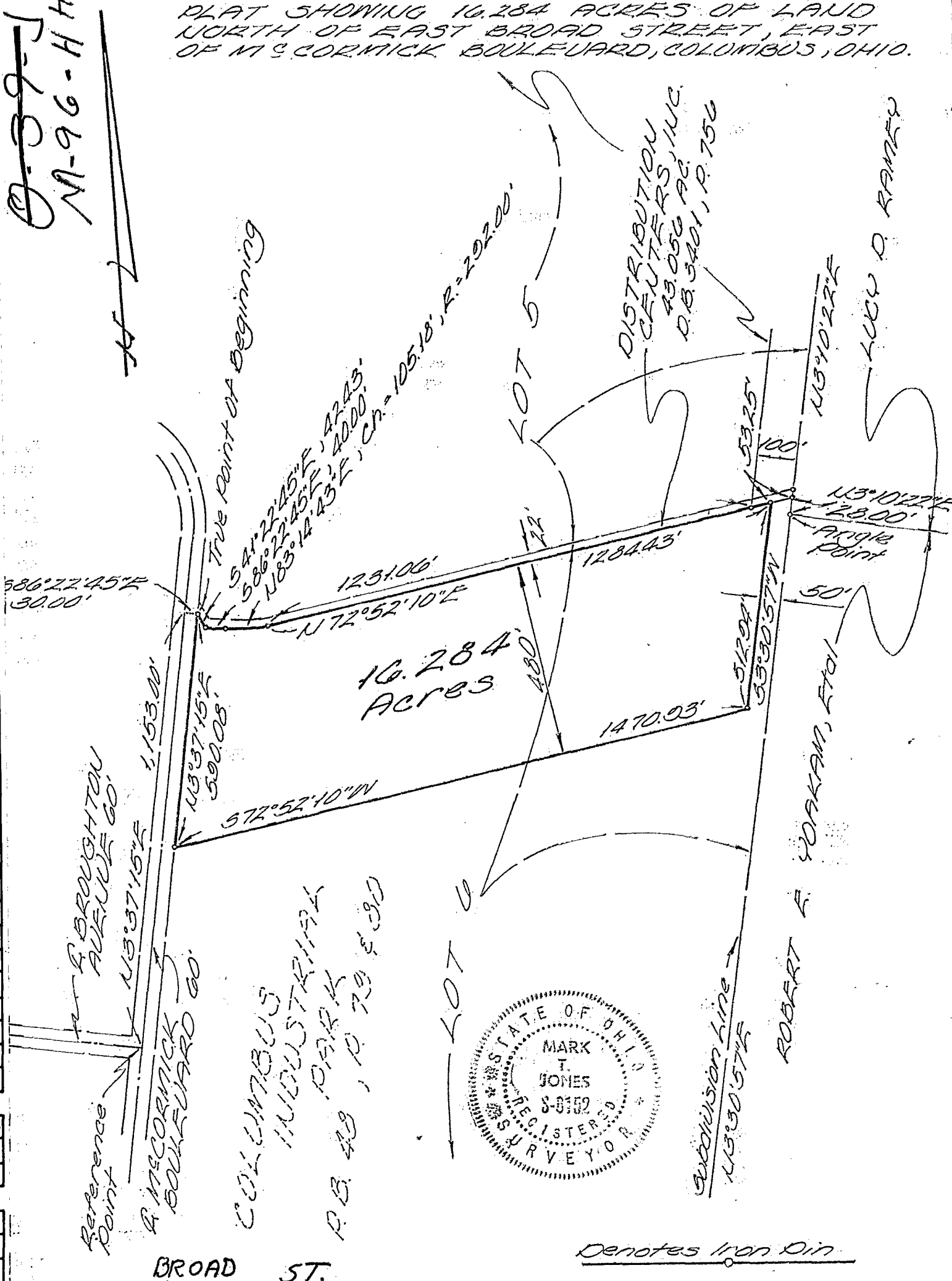
883 N. CASSADY AVENUE

COLUMBUS, OHIO

M-96-11-H-H

18710 7250
18760 7225
18785 7250
18785 7225

PLAT SHOWING 10.284 ACRES OF LAND NORTH OF EAST BROAD STREET, EAST OF M^C CORMICK BOULEVARD, COLUMBUS, OHIO.



Denotes Iron Pin

We hereby certify that the foregoing plat was prepared from an actual survey of the premises.

SCALE 1" = 300'

DATE: 15 Jan 76 33028

HOCKADEN AND ASSOCIATES, INC.

SURV'D.	DRAWN	CHECKED
H.G.	C.W.	M.J.

REVIS'D DATES	ORDER NUMBERS

By Mark T. Jones
Registered Surveyor

0490 120 0211 0399 0376 0399 0310

~~0-39-J~~
M-96-H-H

Reference Point
M^C CORMICK BOULEVARD
N 13° 37' 15" E
590.08'

COLUMBUS INDUSTRIAL PARK
P.B. 49, P. 70 & 90

DISTRIBUTION
CUTTERS, INC.
P.B. 056 P.C. 11C.
P.B. 3401, P. 750

ROBERT A. WAKAM, ETAL

LUCW O. RAMSEY