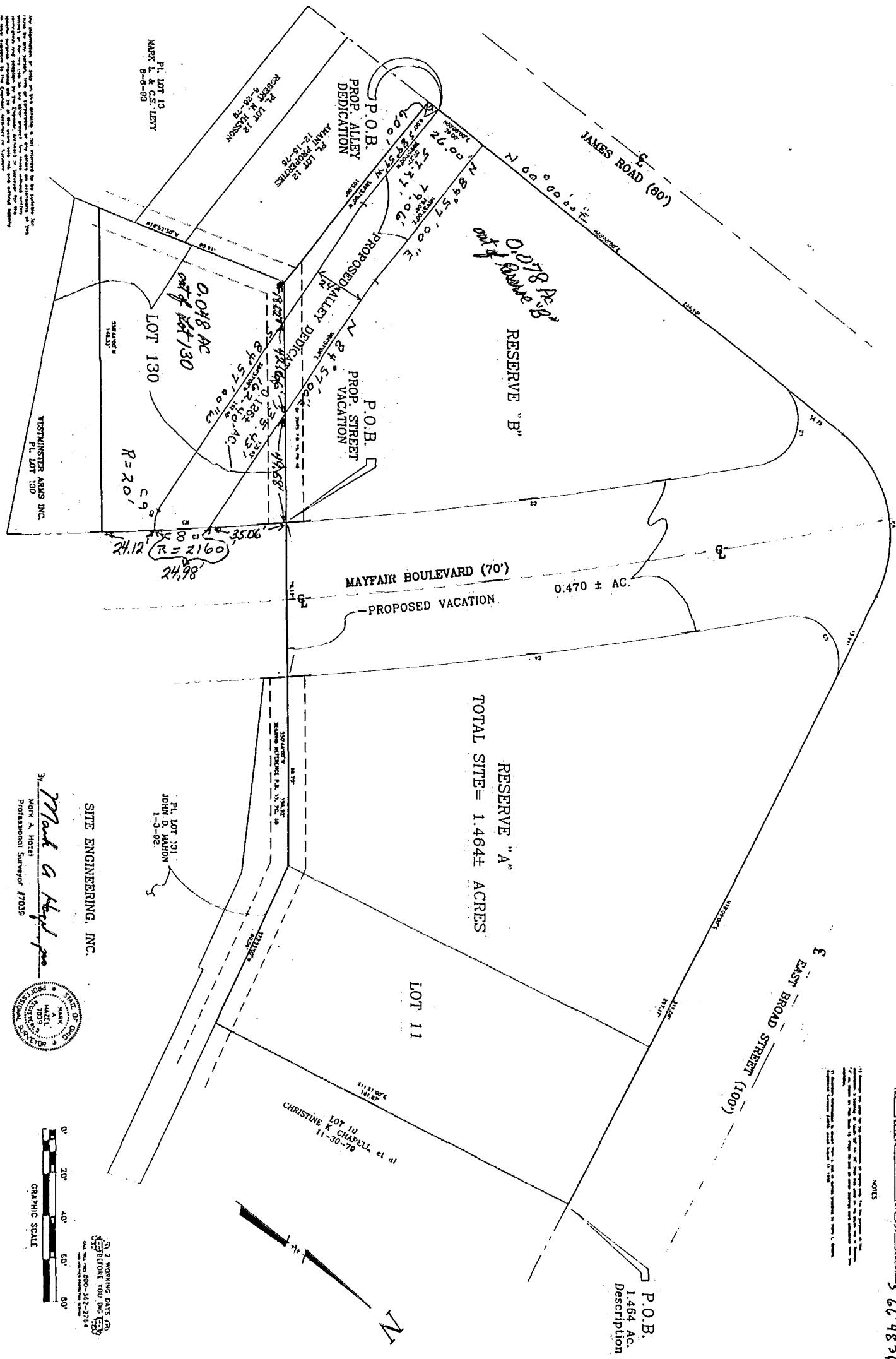


Shaded in the State of Ohio, County of Franklin, City of Columbus, part of Map Section 9, Township 12, Range 21, Reliance Lands and being all of Reserve "A" and "B" and Lot 11 and part of Lot 130 and Mayfair Boulevard as same are designated and delineated on the recorded plat of "MAYFAIR Addition", a subdivision of record in Plat Book 19, Page 40 in the Recorder's Office, Franklin County, Ohio.



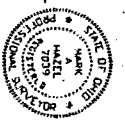
LINE	BEARING	DISTANCE	AREA
1	N 113° 20' 00" E	113.00'	12.50 AC
2	S 70° 00' 00" E	113.00'	12.50 AC
3	S 70° 00' 00" E	113.00'	12.50 AC
4	N 113° 20' 00" E	113.00'	12.50 AC
5	N 113° 20' 00" E	113.00'	12.50 AC
6	S 70° 00' 00" E	113.00'	12.50 AC
7	N 113° 20' 00" E	113.00'	12.50 AC
8	S 70° 00' 00" E	113.00'	12.50 AC
9	N 113° 20' 00" E	113.00'	12.50 AC
10	S 70° 00' 00" E	113.00'	12.50 AC
11	N 113° 20' 00" E	113.00'	12.50 AC
12	S 70° 00' 00" E	113.00'	12.50 AC
13	N 113° 20' 00" E	113.00'	12.50 AC
14	S 70° 00' 00" E	113.00'	12.50 AC
15	N 113° 20' 00" E	113.00'	12.50 AC
16	S 70° 00' 00" E	113.00'	12.50 AC
17	N 113° 20' 00" E	113.00'	12.50 AC
18	S 70° 00' 00" E	113.00'	12.50 AC
19	N 113° 20' 00" E	113.00'	12.50 AC
20	S 70° 00' 00" E	113.00'	12.50 AC
21	N 113° 20' 00" E	113.00'	12.50 AC
22	S 70° 00' 00" E	113.00'	12.50 AC
23	N 113° 20' 00" E	113.00'	12.50 AC
24	S 70° 00' 00" E	113.00'	12.50 AC
25	N 113° 20' 00" E	113.00'	12.50 AC
26	S 70° 00' 00" E	113.00'	12.50 AC
27	N 113° 20' 00" E	113.00'	12.50 AC
28	S 70° 00' 00" E	113.00'	12.50 AC
29	N 113° 20' 00" E	113.00'	12.50 AC
30	S 70° 00' 00" E	113.00'	12.50 AC

NOTES

N 227.85 107.75
76000

541.33' x 71' = 24.98
566.48' x 41' = 23.45

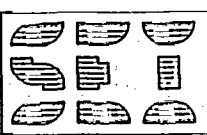
By *Mark A. Hazel*
Mark A. Hazel
Professional Surveyor #7038



SITE ENGINEERING, INC.
3 WORKING DAYS (M-F)
BEFORE YOU DIG (E-D)
CALL 614-885-2750
FAX 614-885-2751

DATE: 03-53
SCALE: 1"=20'
DRAWN: S.E.H.
CHECKED: V.A.H.
FILE: 17038
SHEET: 1 of 1

DON M. CASTO ORGANIZATION
EAST BROAD ST. & JAMES ROAD ~ COLUMBUS, OHIO
PARCEL EXHIBIT



SITE ENGINEERING, INC.
CONSULTING ENGINEERS & SURVEYORS
8550 E. LINCOLN AVENUE
COLUMBUS, OHIO 43230
PHONE: 614-885-2750
FAX: 614-885-2751