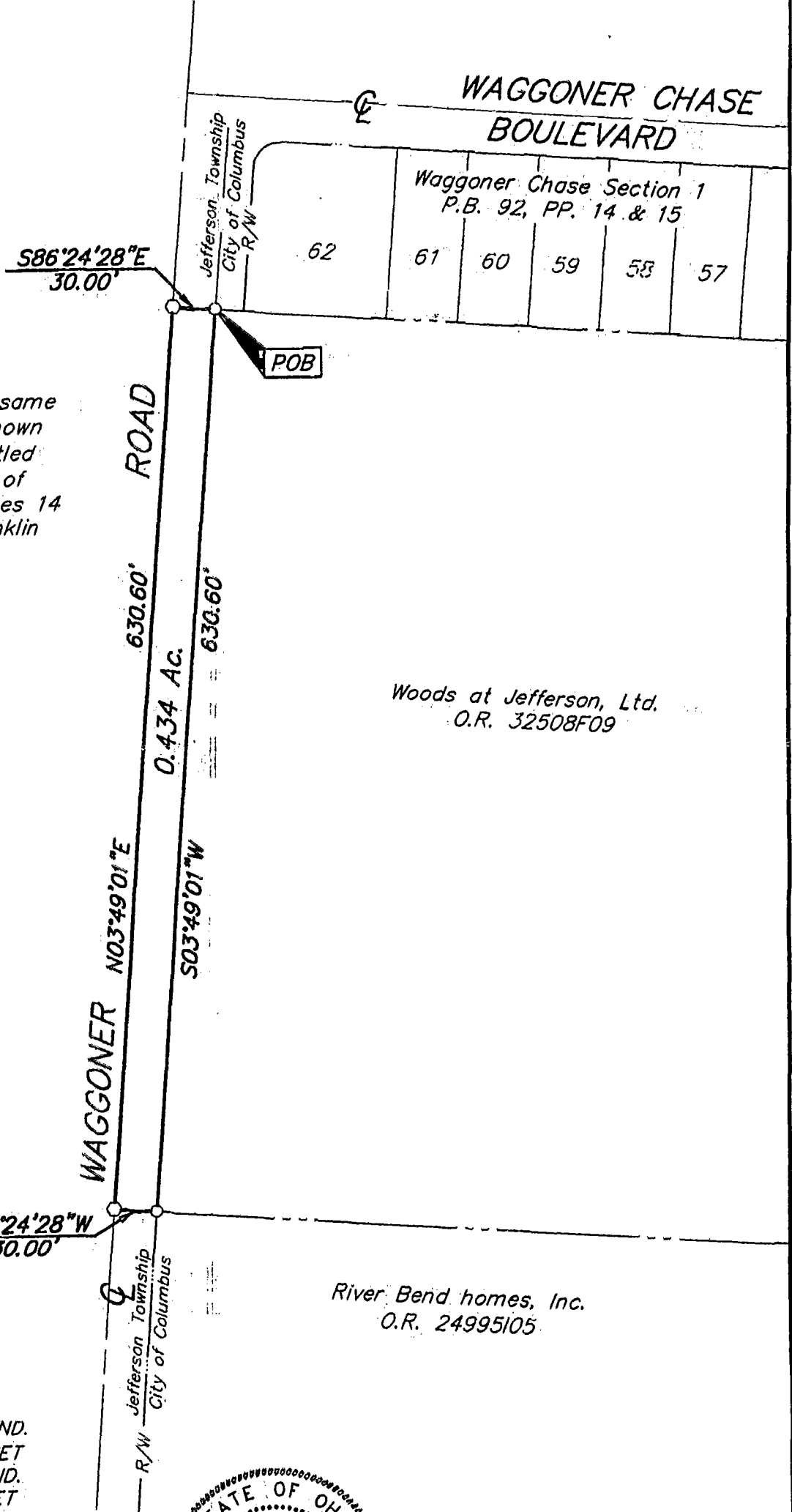


SCALE 1" = 100'

MAY 11, 2001



Bearings are based on the same meridian as the bearings shown on the subdivision plat entitled "Waggoner Chase Section 1" of record in Plat Book 92, Pages 14 & 15, Recorder's Office, Franklin County, Ohio.

O:\PROJECT\20001590.01\DWG\01590BV.DWG - O XREFS - PLOTTED BY JBUSHBY - May 11, 2001 - 3:32 PM

- = MON. FND.
- = I.P. FND.
- = I.P. SET
- = MAG. NAIL FND.
- = MAG. NAIL SET
- ▲ = R.R. SPK. FND.
- △ = R.R. SPK. SET
- = P.K. NAIL FND.

I.P.S Set are 13/16" I.D. Iron pipe W/ cap inscribed EMH&T, Inc.



GRAPHIC SCALE (IN FEET)



**E.M.H.&T. INC.**

By *Matthew A. Kirk*  
 Professional Surveyor No. 7865