

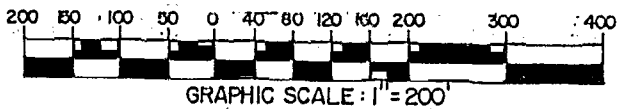
SURVEY OF 1.200 ACRE TRACT
 LOCATED IN LOT 12, SECTION 4, TOWNSHIP 1, RANGE 16
UNITED STATES MILITARY LANDS
 JEFFERSON TOWNSHIP, FRANKLIN COUNTY, OHIO

SCALE 1" = 200'

o = IRON PIN

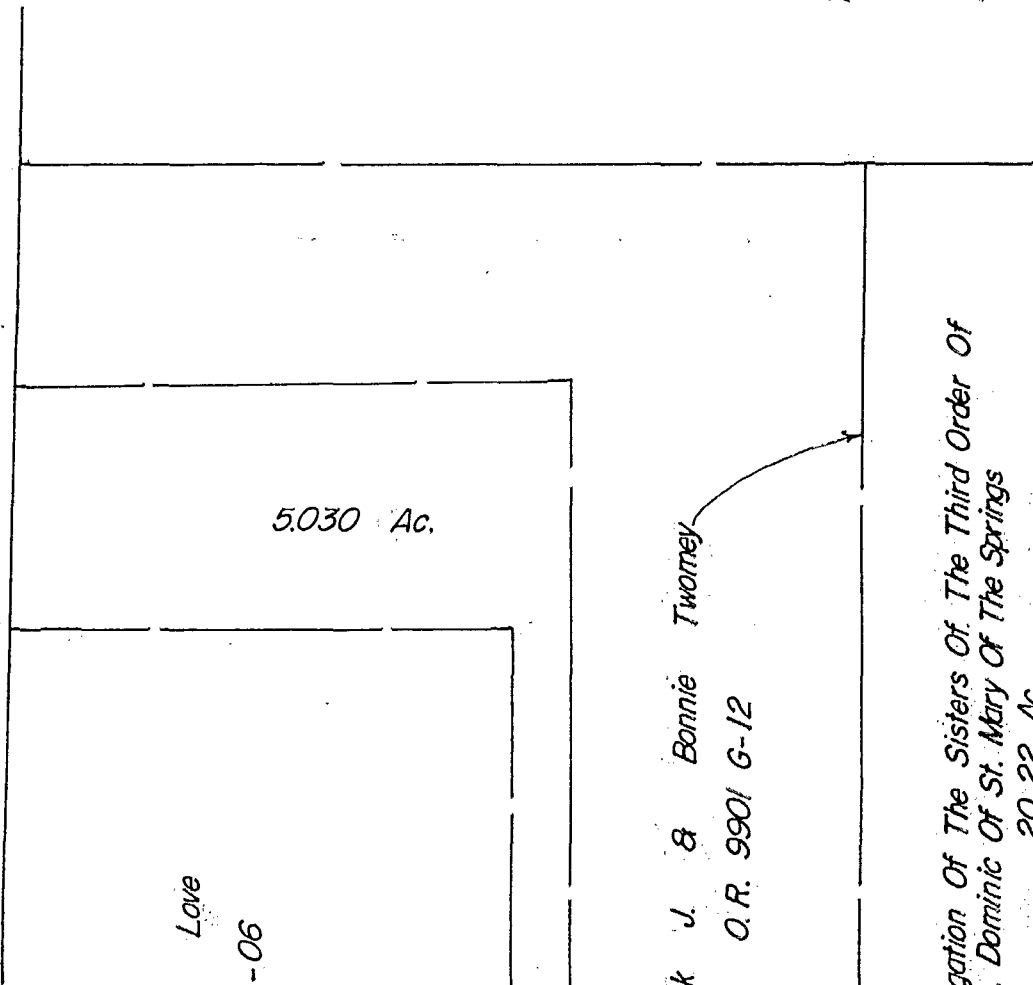
OCTOBER 1, 1990

RECORD REFERENCES O.R. 9901 G12



88/107300
 005/10/88
 (C) 40 A

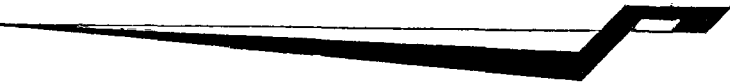
Wayne W. & Marie C. VanWert
 D.B. 2379, Pg. 64



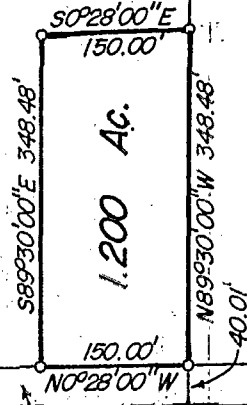
Theodore R. Love
 O.R. 8623 A-06

Patrick J. & Bonnie Twomey
 O.R. 9901 G-12

The Congregation Of The Sisters Of The Third Order Of
 St. Dominic Of St. Mary Of The Springs
 20.22 Ac.
 O.R. 665 H-07



NOTE: The bearings are based on the same meridian as the bearing along Reynoldsburg - New Albany Road. (N0°28'00"W)



Jenning H. & Rosa A. Stevens
 10.705 Ac.
 D.B. 3093, Pg. 203

REYNOLDSBURG - NEW ALBANY ROAD

County Of Franklin
 0.327 Ac.
 D.B. 3339, Pg. 107
E.M.H. & T. INC.

By *[Signature]*
 Professional Surveyor No. 6878

3-40-1A
 JEFFERSON TWP.
 10/10/90