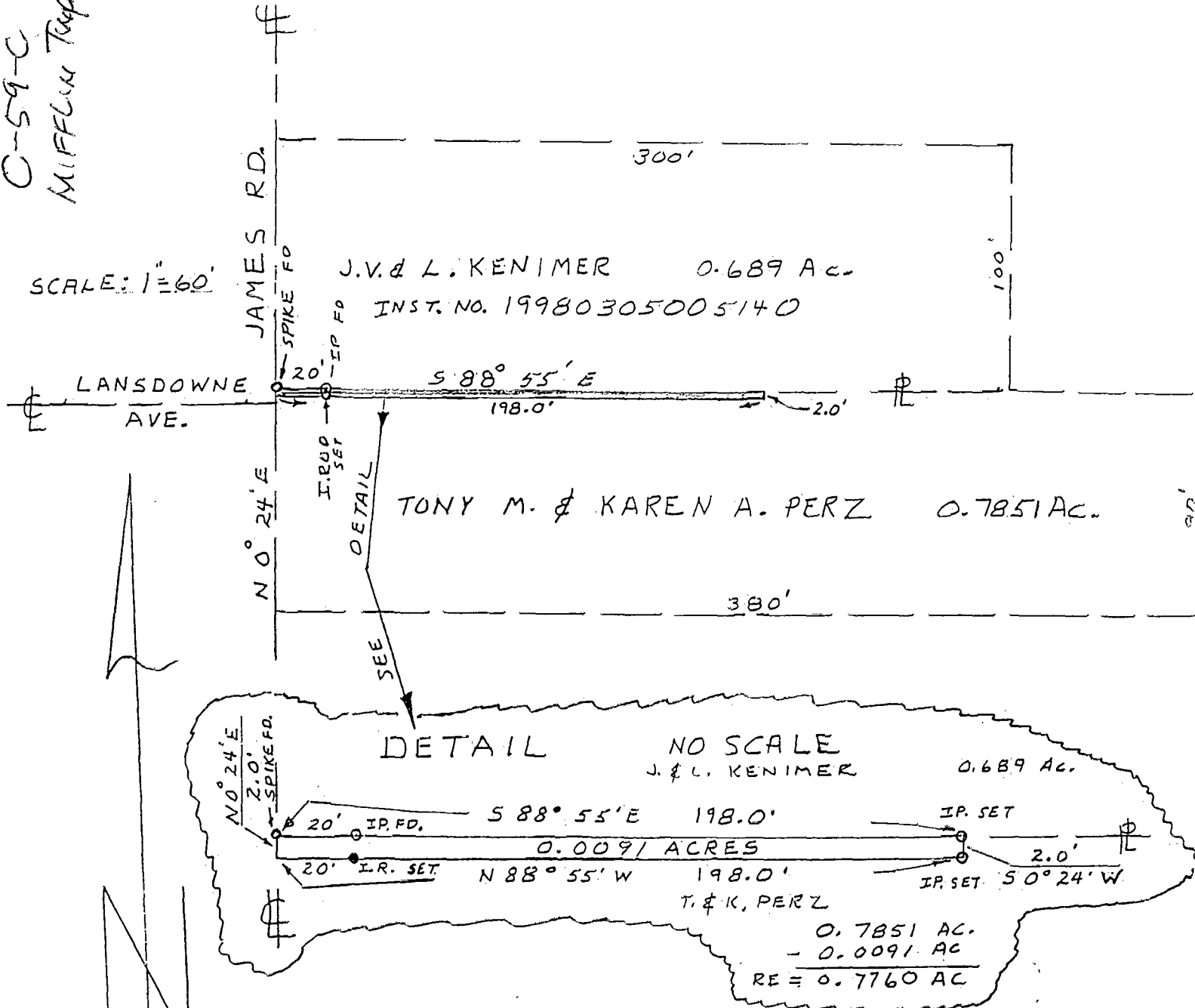


C-59-C  
MIFFLIN TOWNSHIP

SCALE: 1"=60'



SURVEY PLAT

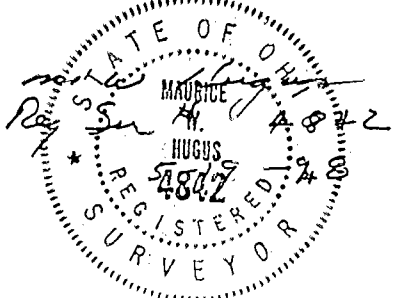
Showing a 0.0091 acre tract out of a 0.7851 acre parcel in T 1, Qt. 4, R 17, USML, and being part of Lot No. Three of the Amicable Subdivision, Gahanna, Mifflin Township, Franklin County, Ohio as said 0.7851 acres is recorded in DV. 13439 pages H - 10 - 12.

Surveyed for : T. & K. Perz and J. & L. Kenimer  
 Surveyed by : M.W.Hugus -- Reg.Sur. # 4842

5 - 19 - 98  
 Scale: 1" = 60'  
 o = Iron pins

This plat prepared from an actual field survey by M.W.Hugus - Reg.Sur. # 4842  
 Bearings established from ~~DP~~ 13439 pages H - 10 - 12.

O.R.



86107325