

Approved:
R. Brubaker
 City of Columbus
 Traffic Engineering
 4/3/98

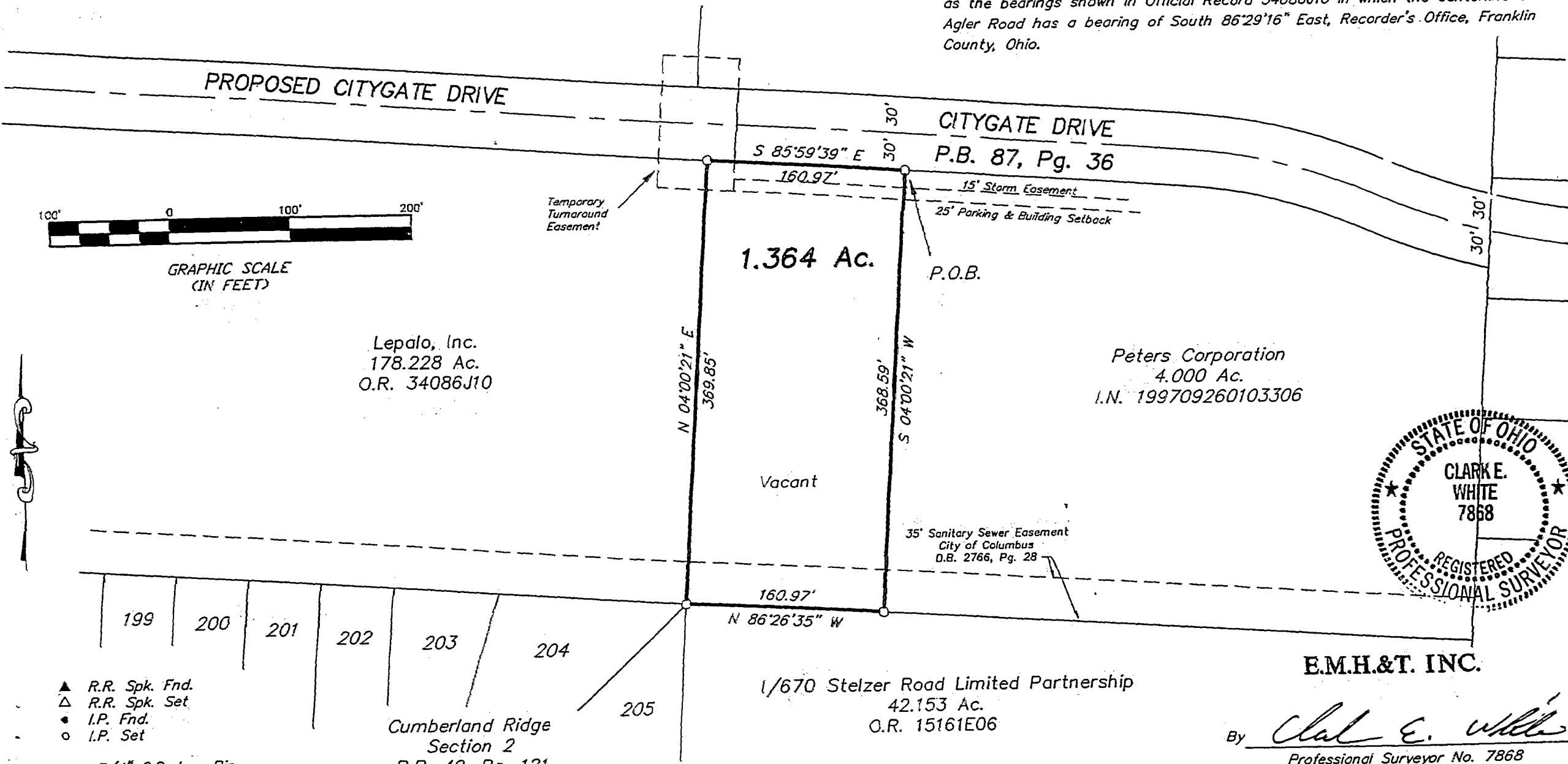
SURVEY OF ACREAGE PARCEL
 LOCATED IN
 QUARTER TOWNSHIP 3, TOWNSHIP 1, RANGE 17
 UNITED STATES MILITARY LANDS
 CITY OF COLUMBUS, FRANKLIN COUNTY, OHIO

85 107 325

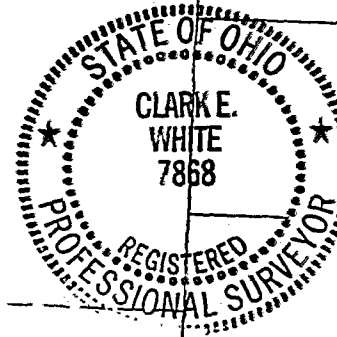
SCALE 1" = 100'

MARCH 6, 1998

BASIS OF BEARINGS: The bearings shown hereon are based on the same meridian as the bearings shown in Official Record 34086J10 in which the centerline of Agler Road has a bearing of South 86°29'16" East, Recorder's Office, Franklin County, Ohio.



GRAPHIC SCALE
 (IN FEET)



- ▲ R.R. Spk. Fnd.
- △ R.R. Spk. Set
- I.P. Fnd.
- I.P. Set

I.P. set are 3/4" O.D. Iron Pin
 30" long w/cap inscribed EMH&T.

Cumberland Ridge
 Section 2
 P.B. 40, Pg. 121

1/670 Stelzer Road Limited Partnership
 42.153 Ac.
 O.R. 15161E06

EMH.&T. INC.

By *Clarke E. White*
 Professional Surveyor No. 7868