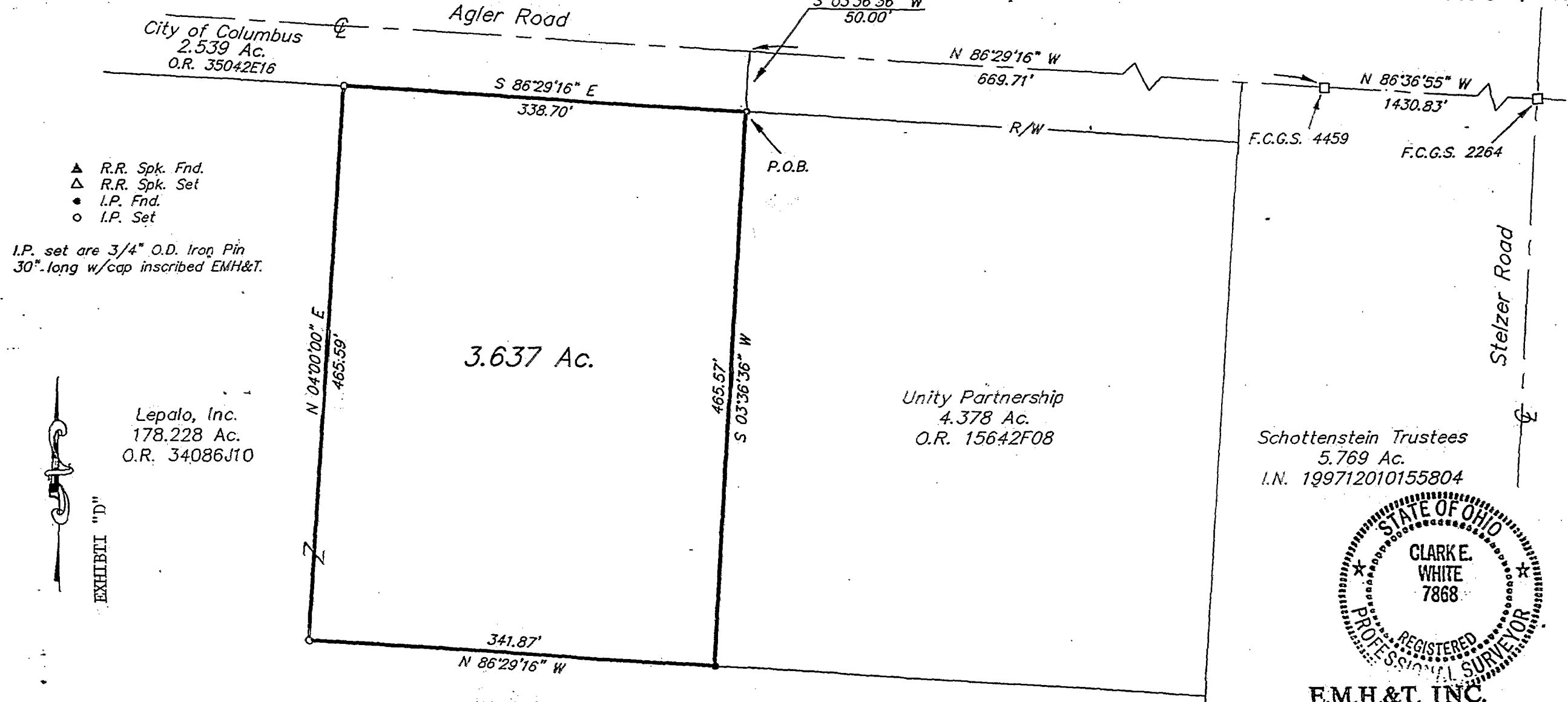


SURVEY OF ACREAGE PARCEL
LOCATED IN
QUARTER TOWNSHIP 3, TOWNSHIP 1, RANGE 17
UNITED STATES MILITARY LANDS
CITY OF COLUMBUS, FRANKLIN COUNTY, OHIO

SCALE 1" = 100'

AUGUST 6, 1998



- ▲ R.R. Spk. Fnd.
- △ R.R. Spk. Set
- I.P. Fnd.
- I.P. Set

I.P. set are 3/4" O.D. Iron Pin
30"-long w/cap inscribed EMH&T.



EXHIBIT "D"

Lepalo, Inc.
178.228 Ac.
O.R. 34086J10

3.637 Ac.

Unity Partnership
4.378 Ac.
O.R. 15642F08

Schottenstein Trustees
5.769 Ac.
I.N. 199712010155804



E.M.H.&T. INC.

BASIS OF BEARINGS: The bearings shown hereon are based on the same meridian as the centerline of Agler Road, having a bearing of South 86°29'16" East, of record in Official Record 34086J10, Recorder's Office, Franklin County, Ohio.



GRAPHIC SCALE
(IN FEET)

By *Clark E. White*
Professional Surveyor No. 7868