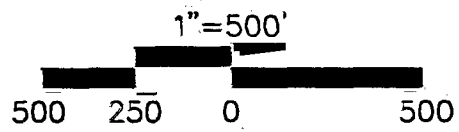


M. IFFLIN
84 857 350
85 107 350

Quarter Township 3, Township 1 N
Range 17 W, United States Military Lands
City of Columbus, County of Franklin
State of Ohio

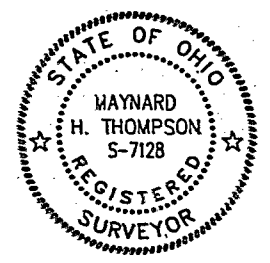
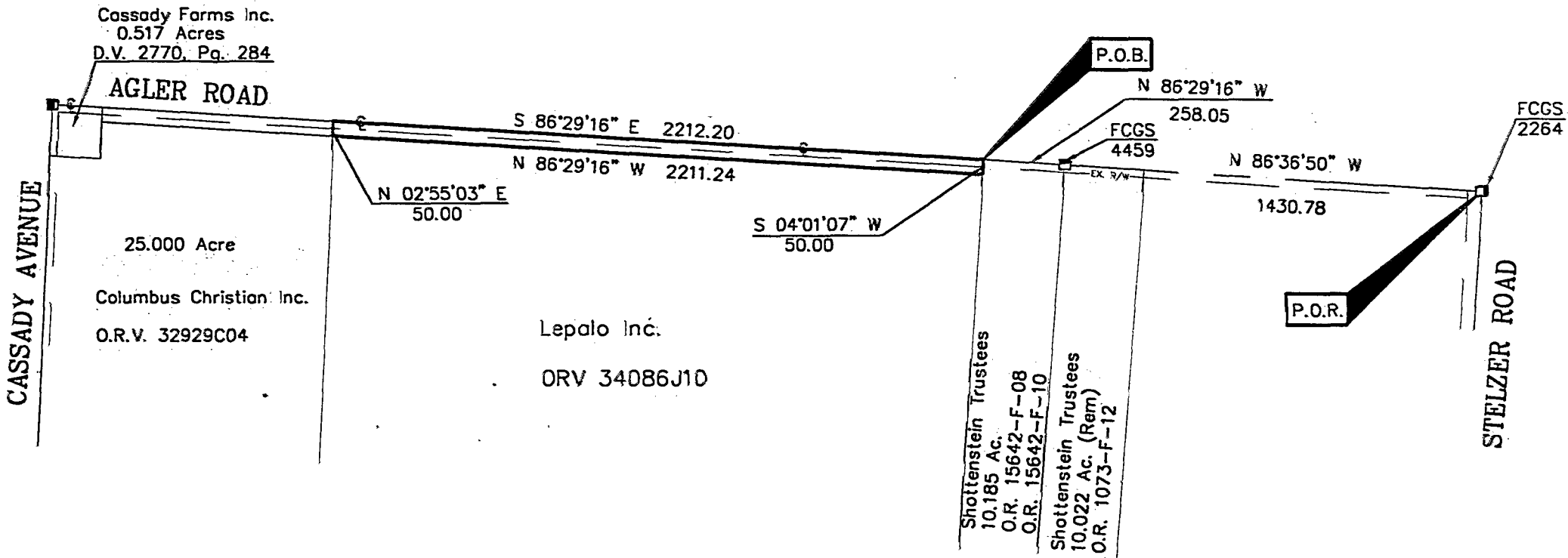


9015
Antares Avenue
Columbus, Ohio 43240
Tel. 614.433.9015
Fax 614.433.9513

CIVIL ENGINEERING
ASSOCIATES

CEA

50' ROAD RIGHT-OF-WAY



This drawing was prepared from an actual field survey by Civil Engineering Assoc., Inc. The basis of bearings is the centerline of Agler Road, between Franklin County Monument No. 2264 and Franklin County Monument No. 4459 as being N 86°36'50" W.

Maynard H. Thompson 3/14/97
Date
Maynard H. Thompson, P.S. # 7128
Civil Engineering Associates, Inc.

491R0W1-500