

JEFFERSON TWP.  
C-38-E

0 38 E.  
170.76

C. J. AND E. W. DATES  
D.B. 3550, PG. 840  
7.423 AC.

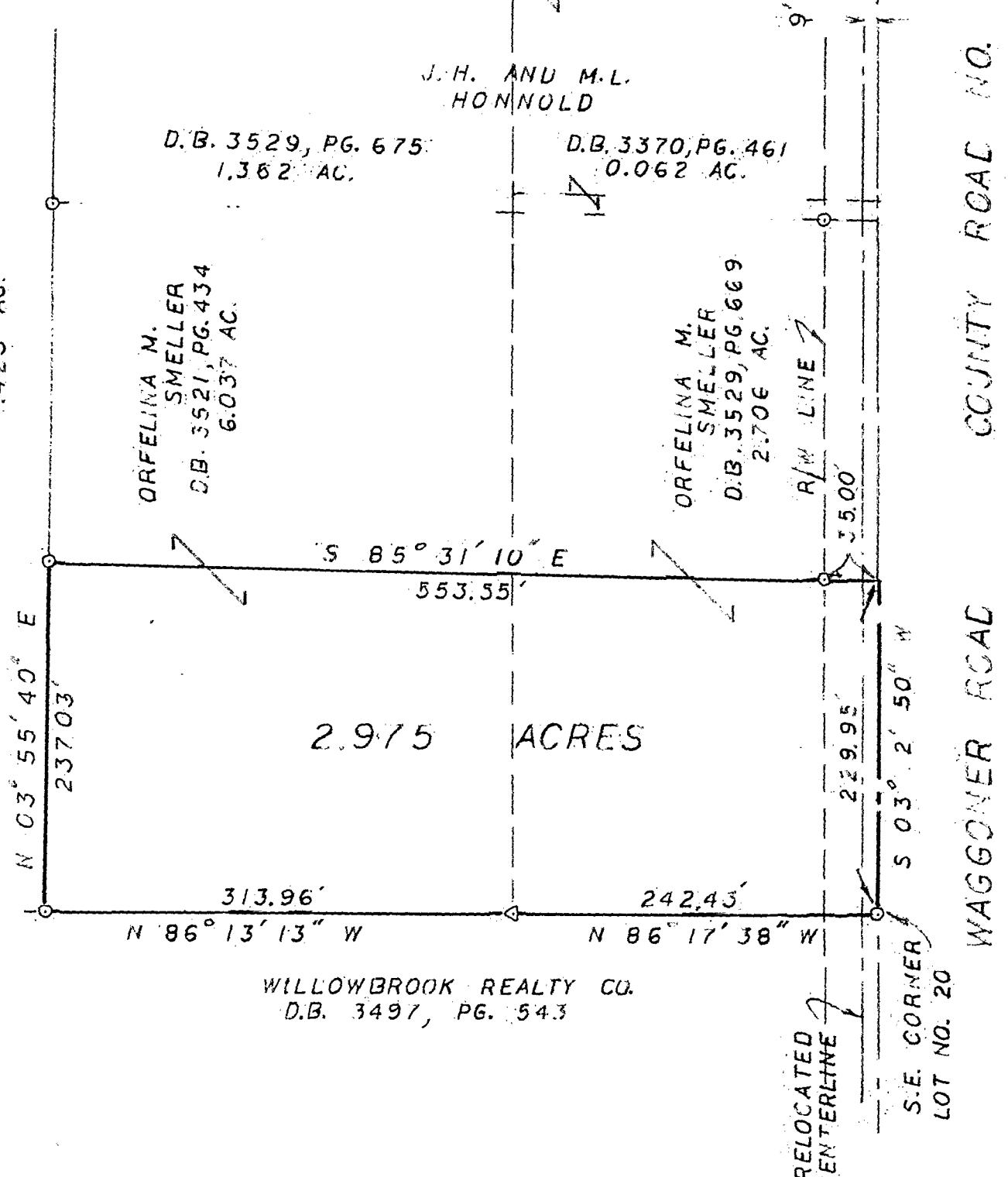
ORFELINA M. SMELLER  
D.B. 3521, PG. 434  
6.037 AC.

J. H. AND M. L. HONNOLD

D.B. 3529, PG. 675  
1.362 AC.

D.B. 3370, PG. 461  
0.062 AC.

ORFELINA M. SMELLER  
D.B. 3529, PG. 669  
2.706 AC.



WILLOWBROOK REALTY CO.  
D.B. 3497, PG. 543

FLAT OF 2.975 ACRES  
PART OF LOT NO. 20 IN THE FIRST QUARTER OF  
TOWNSHIP NO. 1, RANGE NO. 16, U.S.M. LANDS,  
JEFFERSON TOWNSHIP, FRANKLIN COUNTY, OHIO.

FOR  
THOMAS SMELLER

SEPT, 1984

1" = 100'



8860740C

○ IRON PIN FOUND  
△ STONE FOUND

JENSEN SURVEYING  
3251 RILEY ROAD  
JOHNSTOWN, OHIO

BY Richard C. Jensen

RICHARD C. JENSEN  
REGISTERED SURVEYOR, NO. 5631

109.84