



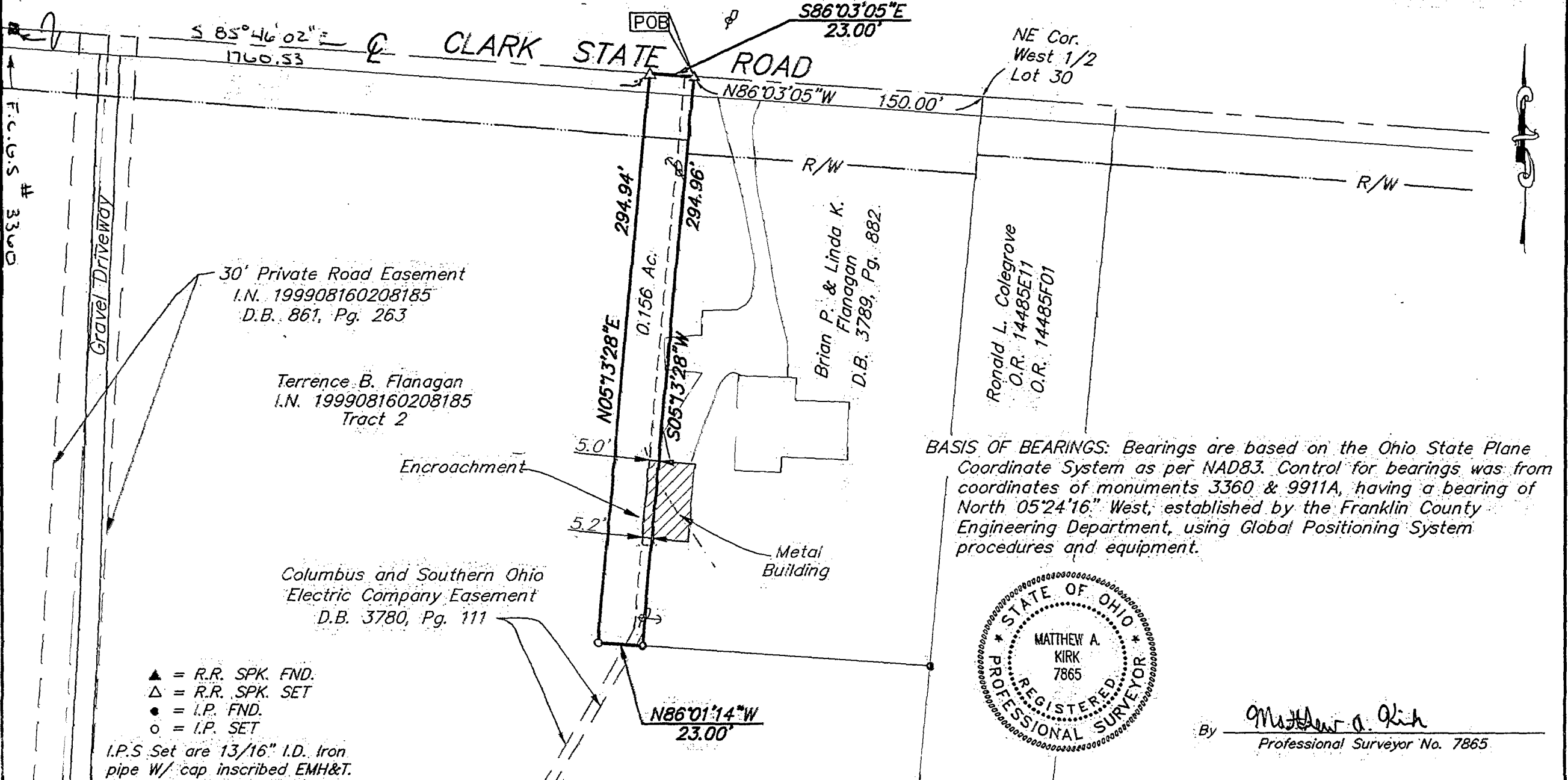
88357425

SURVEY OF ACREAGE PARCEL LOT 30, QTR. TWP. 1, TWP. 1, RNG. 16, UNITED STATES MILITARY LANDS JEFFERSON TOWNSHIP, FRANKLIN COUNTY, OHIO

C-38-D
JEFFERSON TWP

SCALE 1" = 60'

FEBRUARY 28, 2000



30' Private Road Easement
I.N. 199908160208185
D.B. 861, Pg. 263

Terrence B. Flanagan
I.N. 199908160208185
Tract 2

Columbus and Southern Ohio
Electric Company Easement
D.B. 3780, Pg. 111

Brian P. & Linda K.
Flanagan
D.B. 3789, Pg. 882

Ronald L. Colegrove
O.R. 14485E11
O.R. 14485F01

BASIS OF BEARINGS: Bearings are based on the Ohio State Plane Coordinate System as per NAD83. Control for bearings was from coordinates of monuments 3360 & 9911A, having a bearing of North 05°24'16" West, established by the Franklin County Engineering Department, using Global Positioning System procedures and equipment.



By Matthew A. Kirk
Professional Surveyor No. 7865

- ▲ = R.R. SPK. FND.
 - △ = R.R. SPK. SET
 - = I.P. FND.
 - = I.P. SET
- I.P.S. Set are 13/16" I.D. Iron pipe W/ cap inscribed EMH&T.