



SURVEY OF ACREAGE PARCELS

Located In Lot 33
Quarter Township 4, Township 2, Range 16
United States Military Lands
Village Of New Albany & Plain Township, Franklin County, Ohio

08107475

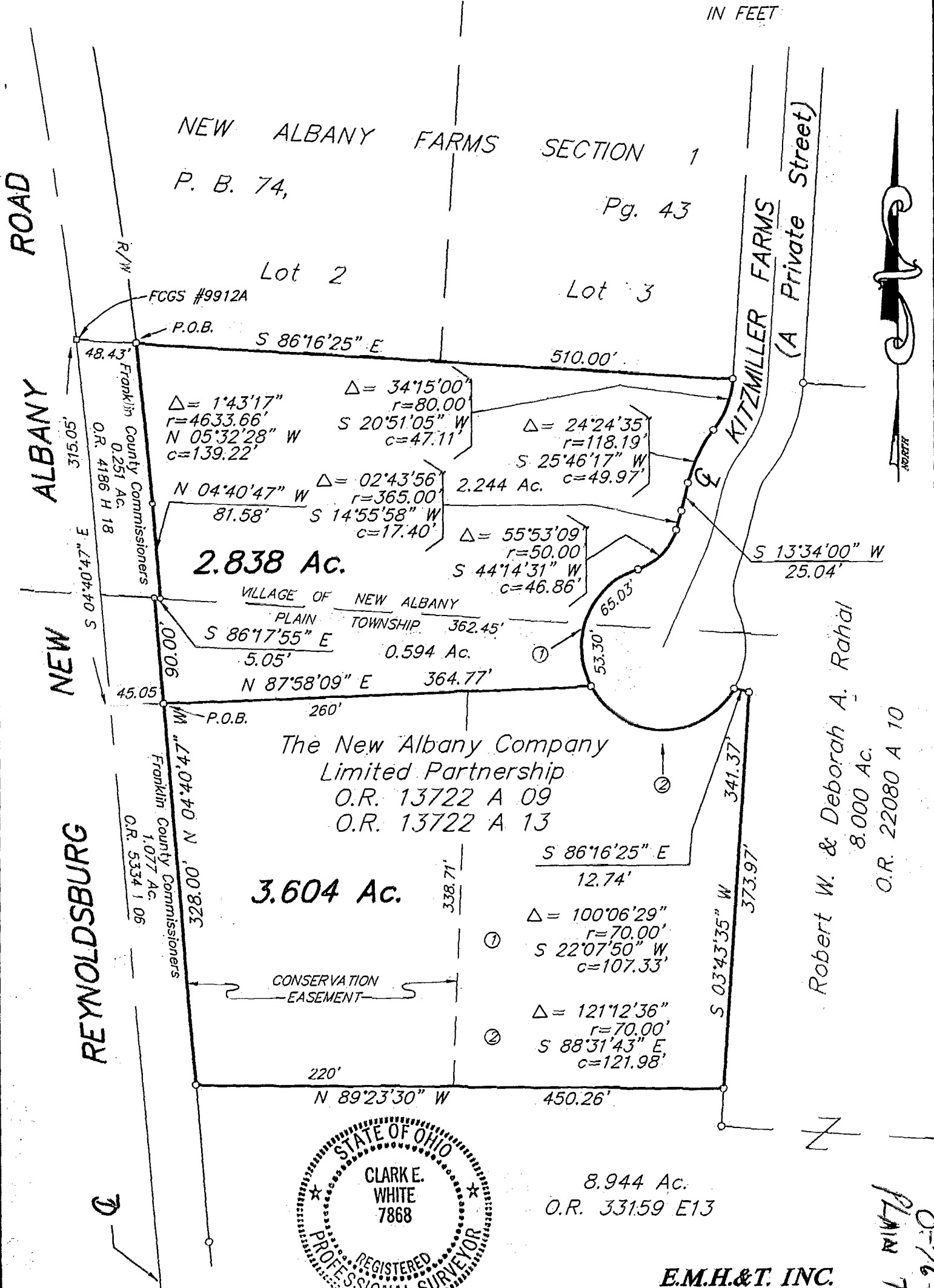
SCALE 1" = 100'

MAY 10, 1994
REVISED MAY 30, 1995
REVISED JULY 9, 1999

IRON PIN



IN FEET



PROJECT S0602.DWG, S8021BV2.DWG - 0 XREFS - PLOTTED BY MACLEAY - July 13, 1999 - 3:44 AM



BASIS OF BEARINGS: Bearings are based on the Ohio State Plane Coordinate System as per NAD83. Control for bearings was from coordinates of monuments Frank 69 & 169, established by the Franklin County Engineering Department, using Global Positioning System procedures and equipment.

E.M.H.&T. INC.

By *Clark E. White*
Professional Surveyor No. 7868

Robert W. & Deborah A. Rahal
8.000 Ac.
O.R. 22080 A 10

PLAIN TWP
0-76-6