



188107475 SURVEY OF ACREAGE PARCEL 0-76-G

LOCATED IN LOT 33, QTR. TWP. 4, TWP. 2, RANGE 16

UNITED STATES MILITARY LANDS

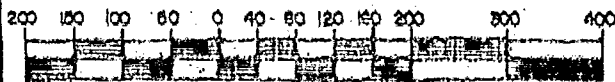
VILLAGE OF NEW ALBANY, FRANKLIN COUNTY, OHIO

SCALE 1" = 200'

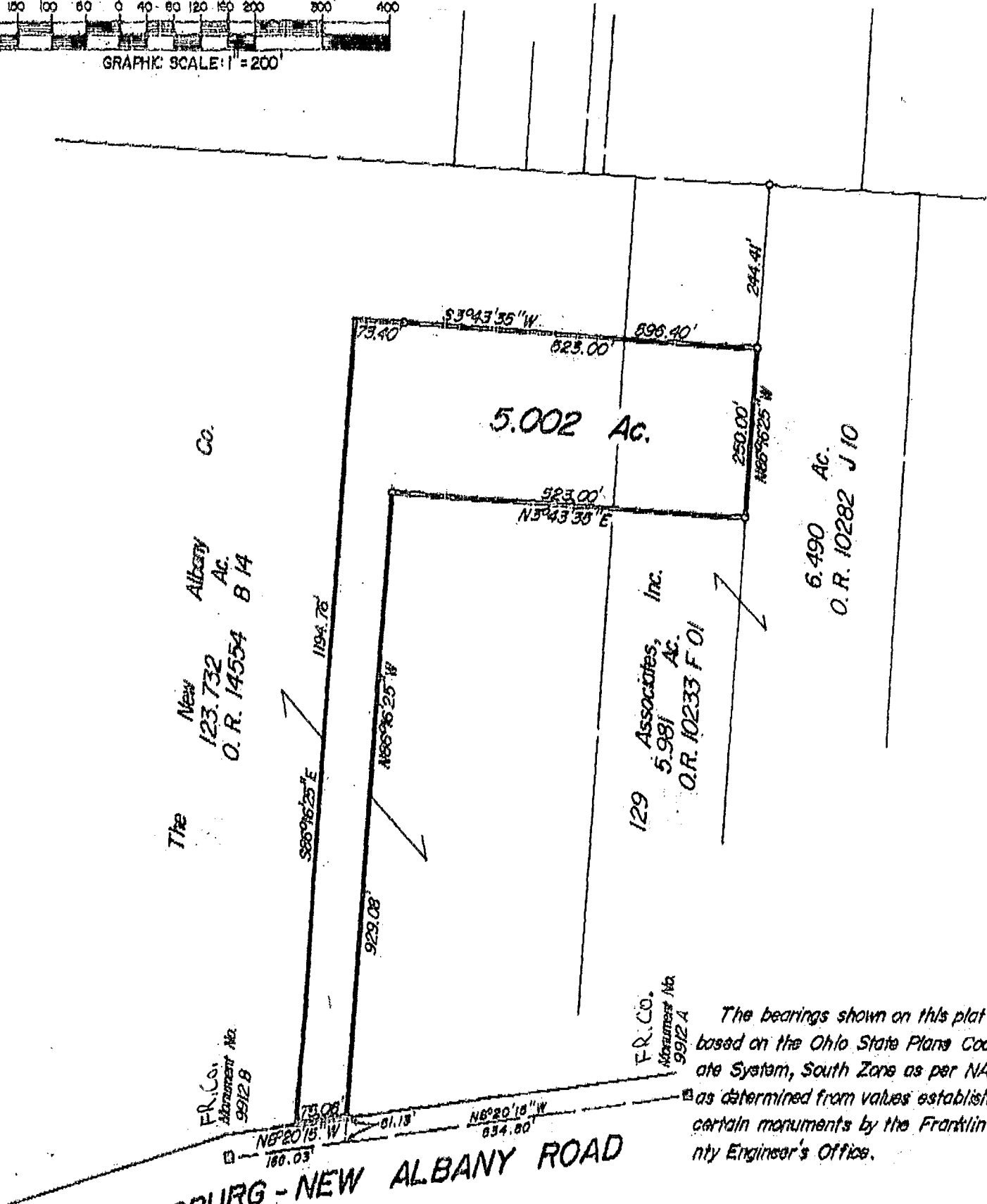
IRON PIN

NOVEMBER 7, 1990
REVISED NOVEMBER 13, 1990

RECORD REFERENCES



GRAPHIC SCALE: 1" = 200'



The bearings shown on this plat are based on the Ohio State Plane Coordinate System, South Zone as per NAD 83 as determined from values established on certain monuments by the Franklin County Engineer's Office.

We hereby declare that the foregoing plat was prepared from an actual survey of the premises and shows the location of the boundaries.

E.M.H.&T. INC.

By James R. Hill
Professional Surveyor No. 6919

0-76-G