

SURVEY OF 4.010 ACRE TRACT

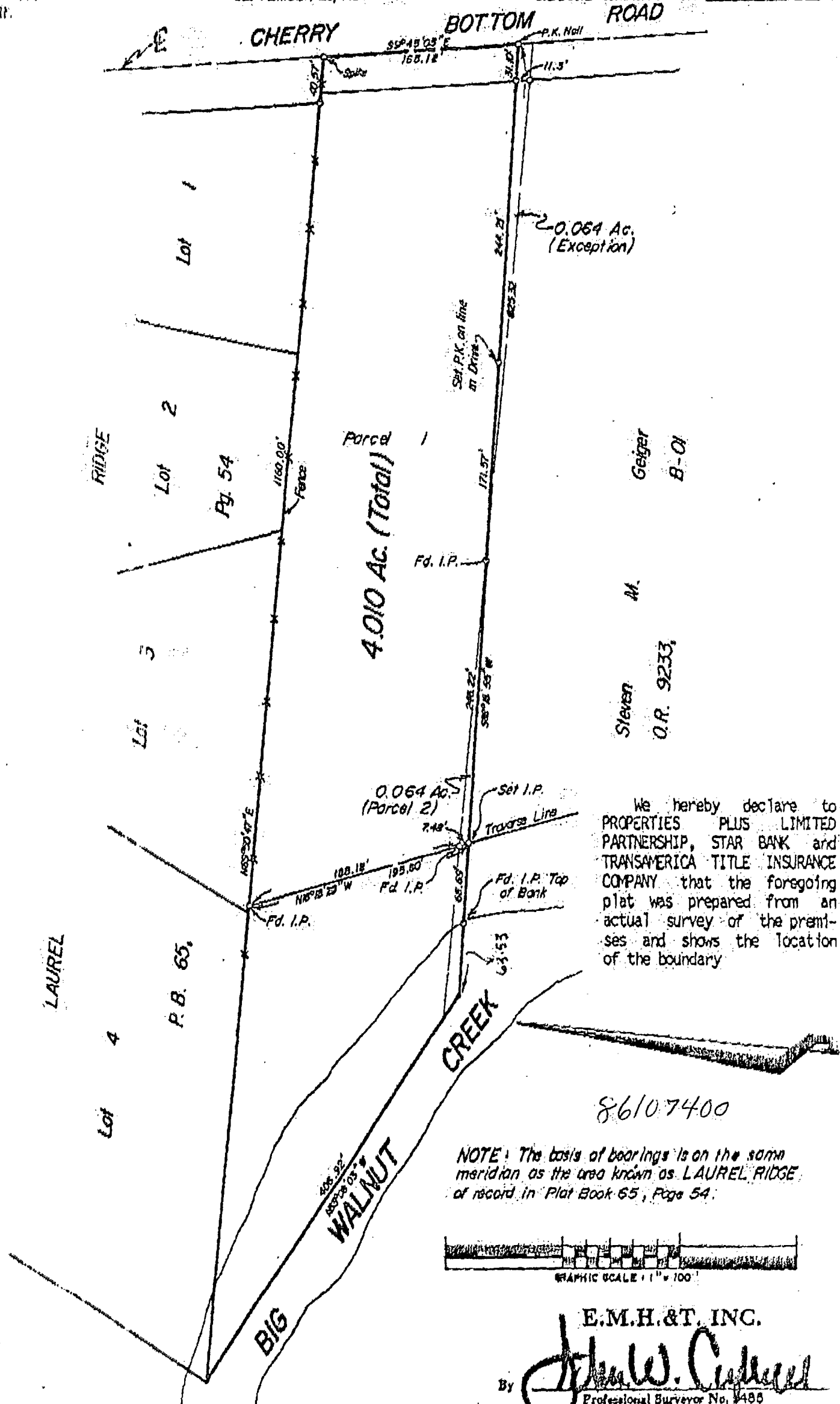
LOCATED IN QUARTER TWP. 1, TWP. 1, RANGE 17
UNITED STATES MILITARY LANDS
CITY OF GAHANNA, FRANKLIN CTY., OHIO

0-57-HH

SCALE 1" = 100'
O = IRON PIN

SEPTEMBER 20, 1988

RECORD REFERENCES



We hereby declare to PROPERTIES PLUS LIMITED PARTNERSHIP, STAR BANK and TRANSAMERICA TITLE INSURANCE COMPANY that the foregoing plat was prepared from an actual survey of the premises and shows the location of the boundary

86107400

NOTE: The basis of bearings is on the same meridian as the area known as LAUREL RIDGE of record in Plat Book 65, Page 54.



E.M.H.&T. INC.

By *John W. Caldwell*
Professional Surveyor No. 4485