

86607475

SURVEY OF 0.482 ACRE TRACT

LOCATED IN
QUARTER TOWNSHIP 4, TOWNSHIP 2, RANGE 17
UNITED STATES MILITARY LANDS
CITY OF COLUMBUS, FRANKLIN COUNTY, OHIO

O-4-J
BLEEDON TRACT

SCALE 1" = 100'

o = IRON PIN

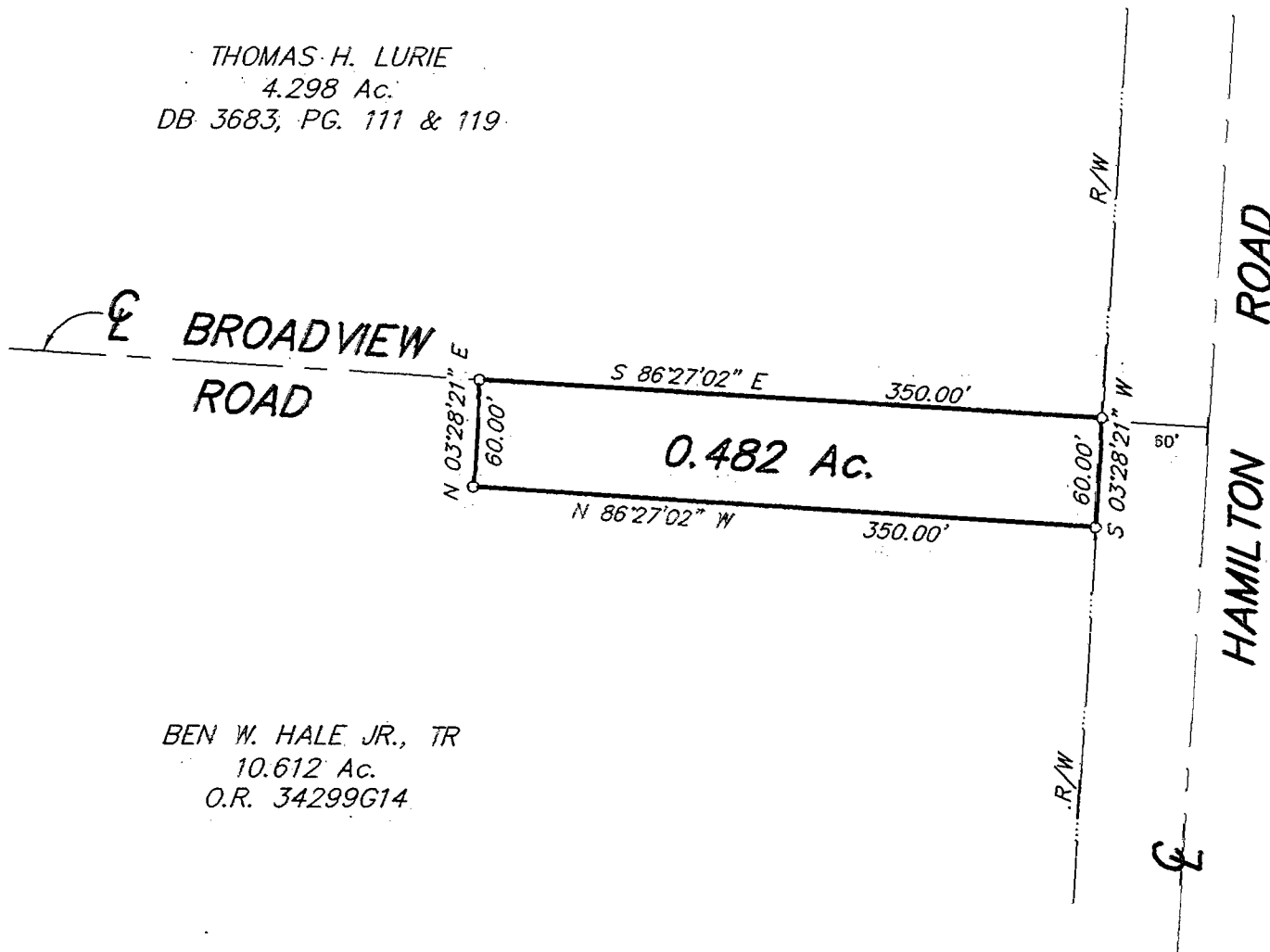
NOVEMBER 2, 1999



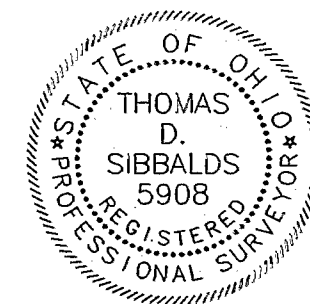
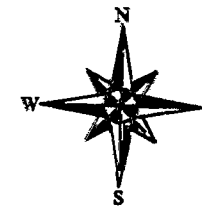
IN FEET

THOMAS H. LURIE
4.298 Ac.
DB 3683, PG. 111 & 119

BASIS OF BEARINGS : The bearings shown on this plat are based on the Ohio State Plane Coordinate System as per NAD83. Control for bearings was from coordinates of monuments Frank 69 and Frank 169 and determines the bearing for the centerline of Morse Road as S 86°20'56" E.



BEN W. HALE JR., TR
10.612 Ac.
O.R. 34299G14



E.M.H.&T. INC.

By Thomas D. Sibbalds
Professional Surveyor No. 5908

SERVER-4 \SURVEY\PROJECT\01679\DWG\3PARCELS.DWG - 0 XREFS: - PLOTTED BY RPARKER - November 03, 1999 - 9:09 AM