

SCALE 1" = 50'

○=IRON PIN

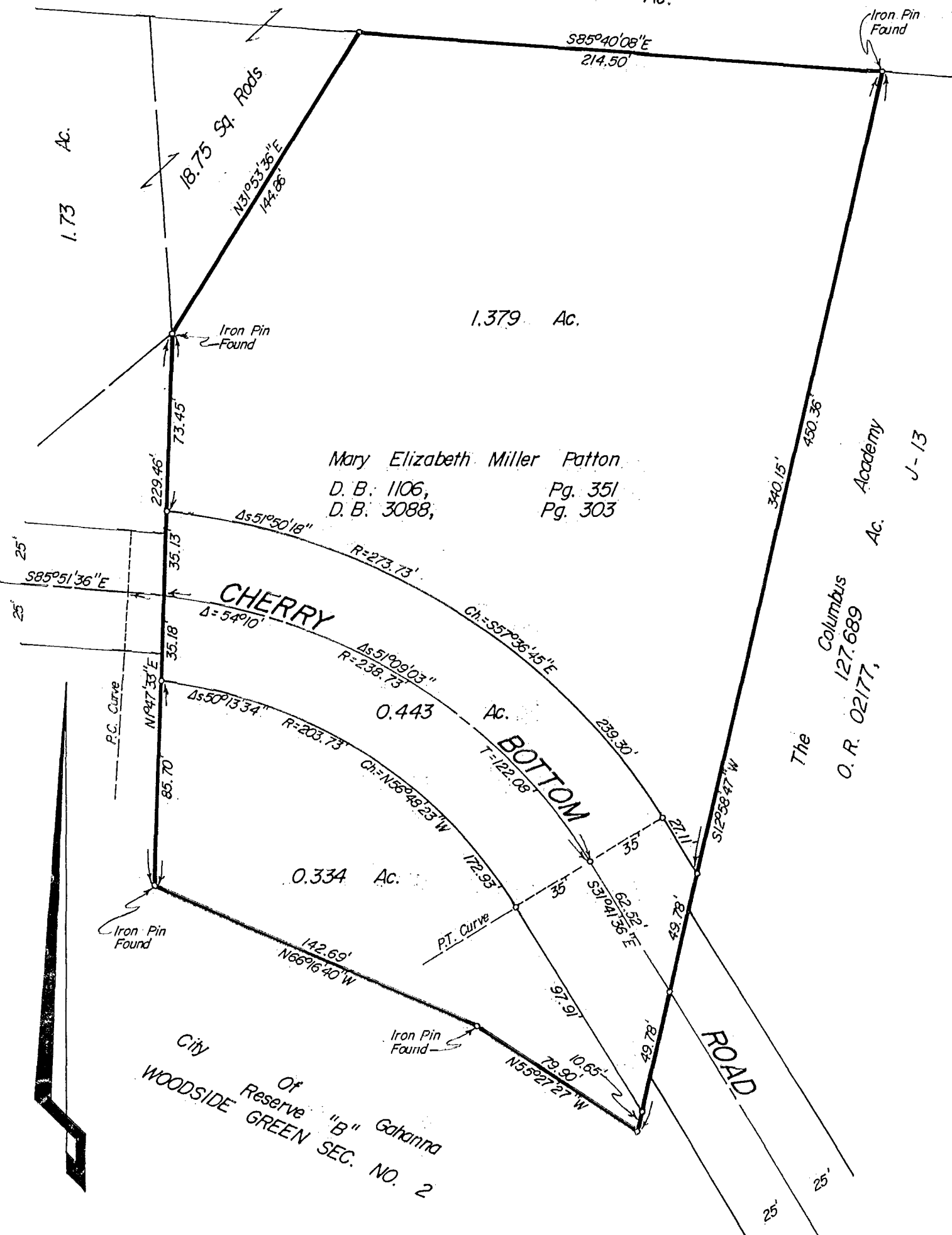
JULY 25, 1987

RECORD REFERENCES D.B. 1106, Pg. 351  
 D.B. 3088, Pg. 303

**DETAIL "A"**

Mary E. M. Patton  
 57.825 Ac.

0.57 Ac.



Mary Elizabeth Miller Patton  
 D.B. 1106, Pg. 351  
 D.B. 3088, Pg. 303

The Columbus Academy  
 O.R. 02177, Ac.  
 J-13

City of Reserve "B" Gahanna  
 WOODSIDE GREEN SEC. NO. 2

**E.M.H.&T. INC.**

We hereby declare that the foregoing plat was prepared from an actual survey of the premises and shows the location of the boundary.

8 610 745 0

By W. B. Meckwart  
 Professional Surveyor No. 4072