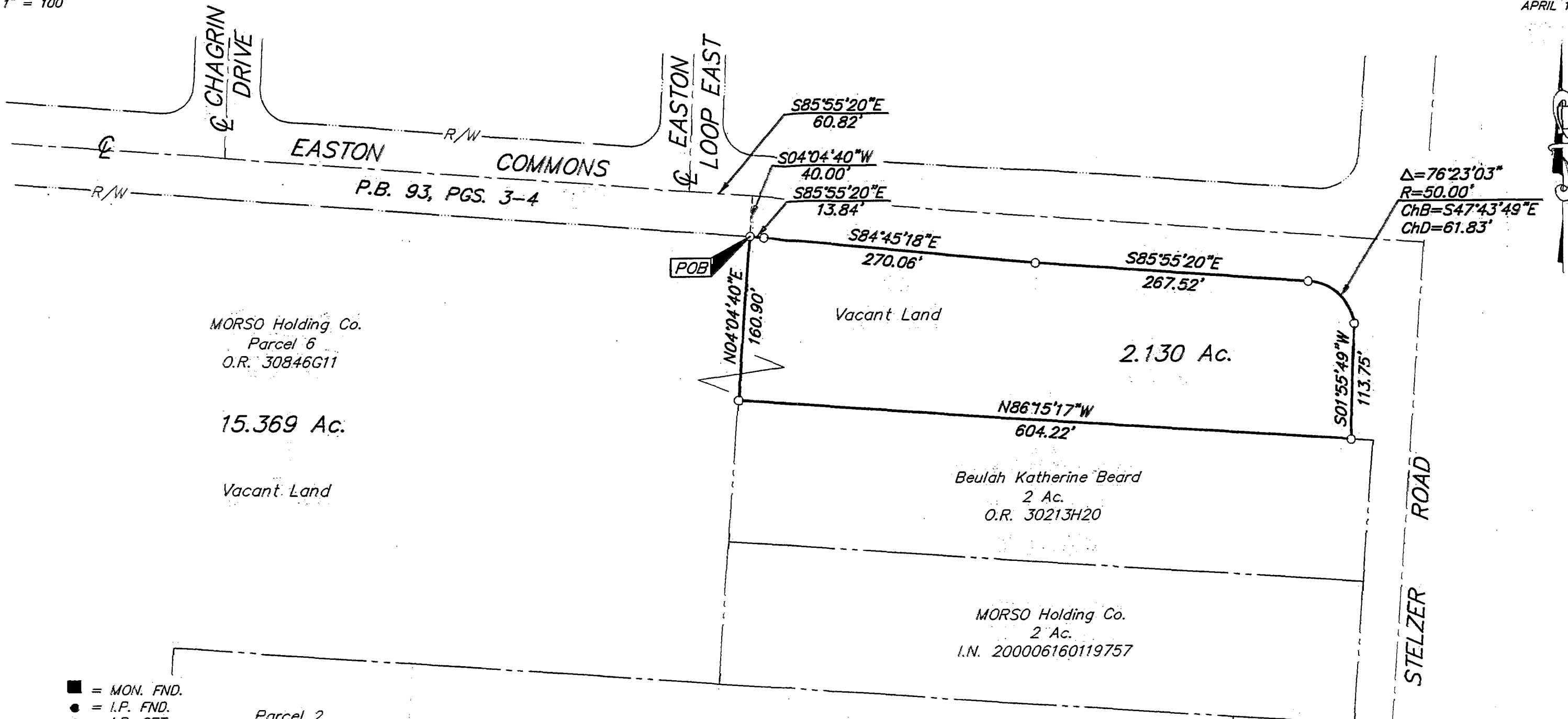


SURVEY OF ACREAGE PARCEL
 LOCATED IN
 SECTION 2, TOWNSHIP 1, RANGE 17
 UNITED STATES MILITARY LANDS
 CITY OF COLUMBUS, FRANKLIN COUNTY, OHIO

SCALE 1" = 100'

APRIL 12, 2001



- = MON. FND.
- = I.P. FND.
- = I.P. SET
- = MAG. NAIL FND.
- = MAG. NAIL SET
- ▲ = R.R. SPK. FND.
- △ = R.R. SPK. SET
- ◆ = P.K. NAIL FND.

Parcel 2
 TIAA-CREF
 I.N. 199912010296517

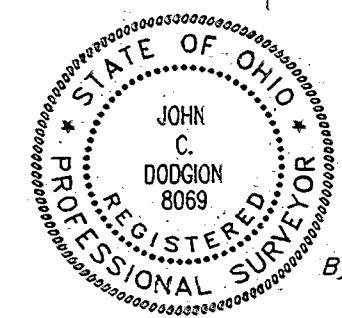
Parcel 1

I.P.S Set are 13/16" I.D. Iron pipe w/ cap inscribed EMH&T, Inc.



GRAPHIC SCALE
 (IN FEET)

Bearings are based on the Ohio State Plan Coordinate System as per NAD83. Control for bearings was from coordinates of monument FRANK 64 & FRANK 164, determining a portion of the centerline of MORSE ROAD as $S 86^{\circ}15'51'' E$.



E.M.H.&T. INC.

By *John C. Dodgion* 4/12/01
 Professional Surveyor No. 8069