

# EVANS MECHWART HAMBLETON & TILTON, INC.

CONSULTING ENGINEERS — SURVEYORS  
GAHANNA, OHIO

056-E

MIFFLIN TWP.  
C 56 E

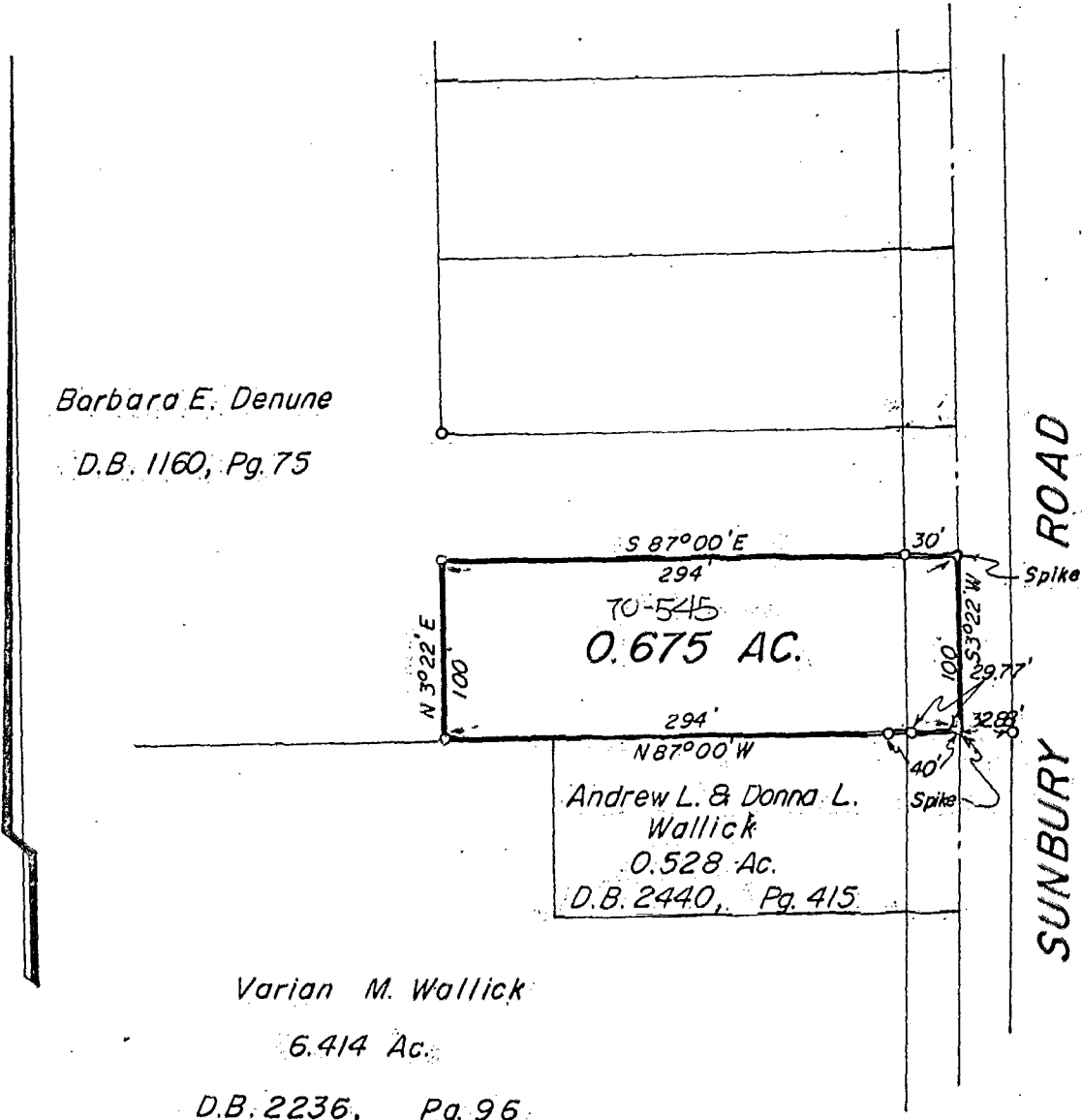
## SURVEY OF 0.675 ACRE TRACT LOCATED IN

SECTION 2, TOWNSHIP 1, RANGE 17, UNITED STATES MILITARY LANDS  
MIFFLIN TOWNSHIP, FRANKLIN COUNTY, OHIO

SCALE 1" = 100'

○ = IRON PIN  
MAY 9, 1970

DEED BOOK 1160 PAGE 75  
PLAT BOOK PAGE



Barbara E. Denune  
D.B. 1160, Pg. 75

TO-545  
0.675 AC.  
Andrew L. & Donna L.  
Wallick  
0.528 AC.  
D.B. 2440, Pg. 415

Varian M. Wallick  
6.414 Ac.  
D.B. 2236, Pg. 96

MIFFLIN TWP. 1120 056 E 003

Corr

I hereby certify that the foregoing plat was prepared from an actual survey of the premises and that the bearings and distances are correct.

EVANS MECHWART HAMBLETON & TILTON

Sur.  
/

346-7405