

SURVEY OF ACREAGE PARCEL
SEC 2 TWP 1 RNG 17 USML
CITY OF COLUMBUS, FRANKLIN COUNTY, OHIO

SCALE 1" = 200'

MARCH 23, 1998

C/L STELZER ROAD

MORSO HOLDING CO
PARCEL 9
OR30846G11

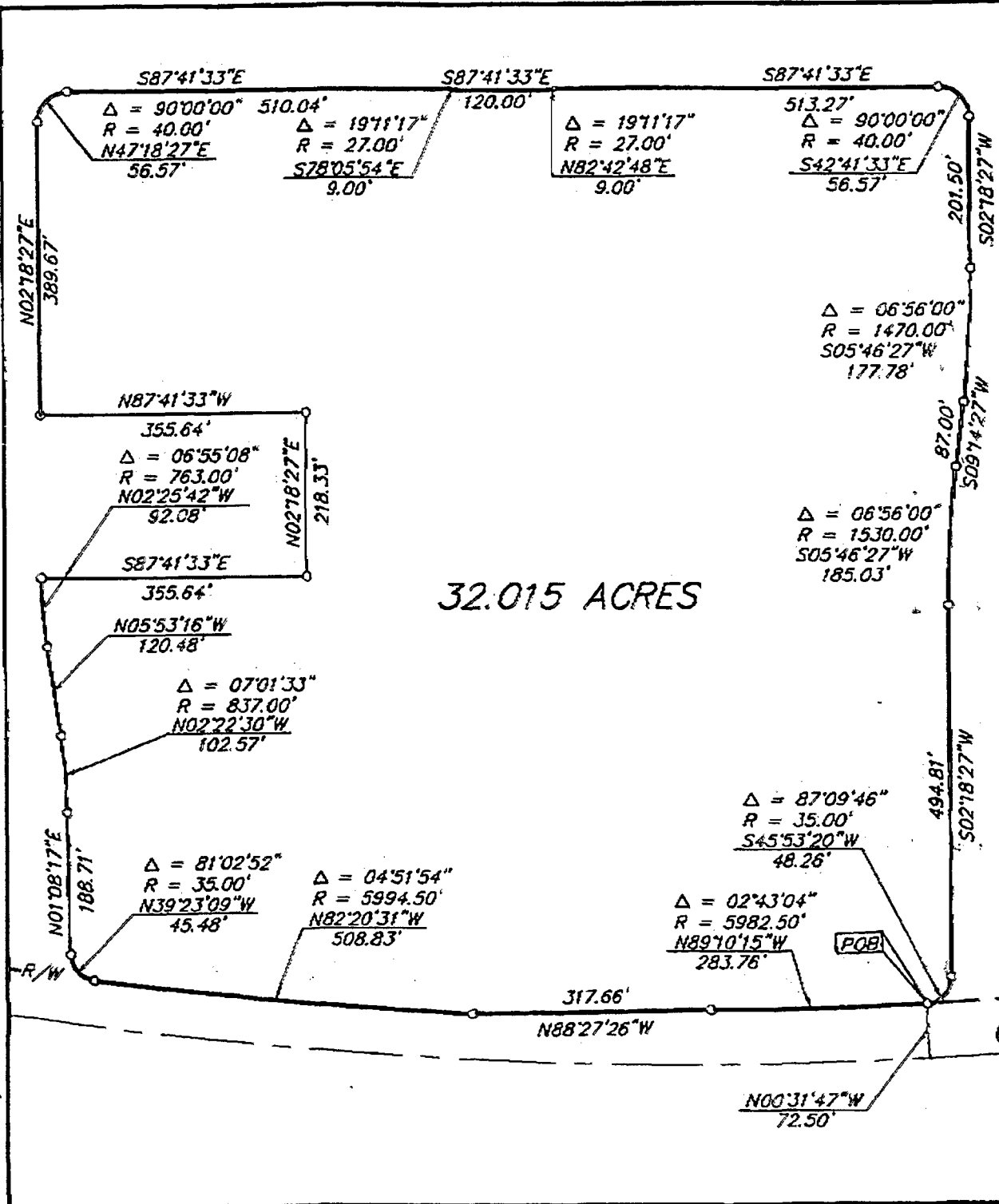
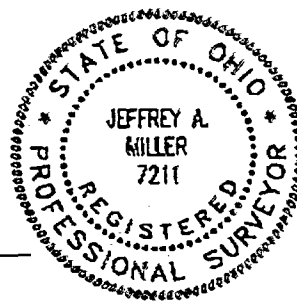
Bearings are based on the Ohio State Plane Coordinate System as per NAD83. Control for bearings was from coordinates of monuments FRANK 64 & FRANK 164 and determines the bearing for the center-line of Easton Way as N 87°24'57" W

- ▲ = R.R. SPK. FND.
- △ = R.R. SPK. SET
- = I.P. FND.
- = I.P. SET

I.P.S Set are 13/16" I.D. Iron pipe W/ cap inscribed EMH&T.

E. M. H. & T. INC.

By Jeffrey A. Miller 3.23.98
Professional Surveyor No. 7211



C/L EASTON WAY

△ = 06°41'45"
R = 6055.00'
S86°07'20"W
707.20'

△ = 09°48'35"
R = 1625.00'
S87°40'46"W
277.88'

DSN L 27 58