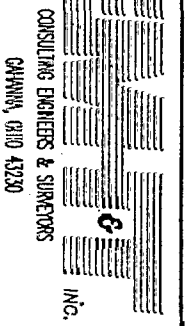


0-57-A



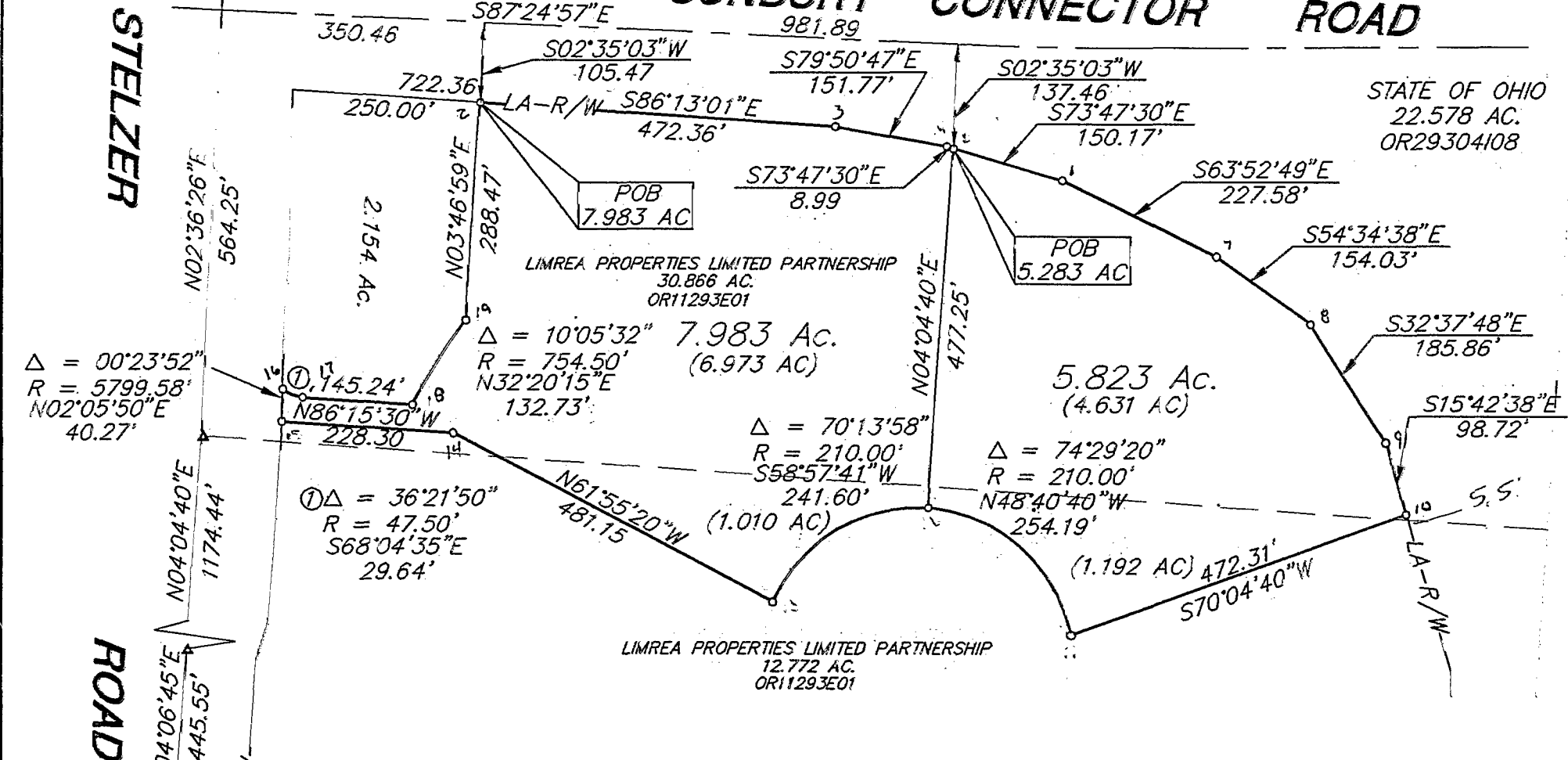
SCALE 1" = 200'

AUGUST 14, 1995

SURVEY OF ACREAGE PARCELS  
SEC 1 TWP 1 RNG 17 USML  
CITY OF COLUMBUS, FRANKLIN COUNTY, OHIO

# STELZER - SUNBURY CONNECTOR ROAD

INTERSTATE 270



Δ = 00°23'52"  
R = 5799.58'  
N02°05'50"E  
40.27'

N02°36'26"E  
564.25'  
N04°04'40"E  
1174.44'

N04°06'45"E  
445.55'  
R/W

LOOP RD. "A"  
PB 79 PG 78

Bearings are based on the Ohio State Plane Coordinate System as per NAD83. Control for bearings was from coordinates of monuments FRANK 64 & FRANK 164 established by the Franklin County Engineering Department, using Global Positioning System procedures and equipment. And determines the centerline for a portion of Stelzer Road as being N 4°04'40" E.



*Jeffrey A. Miller* 8.14.95  
JEFFREY A. MILLER P.S. #7211

▲ = R.R. SPK. FND.  
△ = R.R. SPK. SET  
● = I.P. FND.  
○ = I.P. SET  
I.P.S Set are 3/4" O.D. Iron pipe w/ cap inscribed EMH&T.