

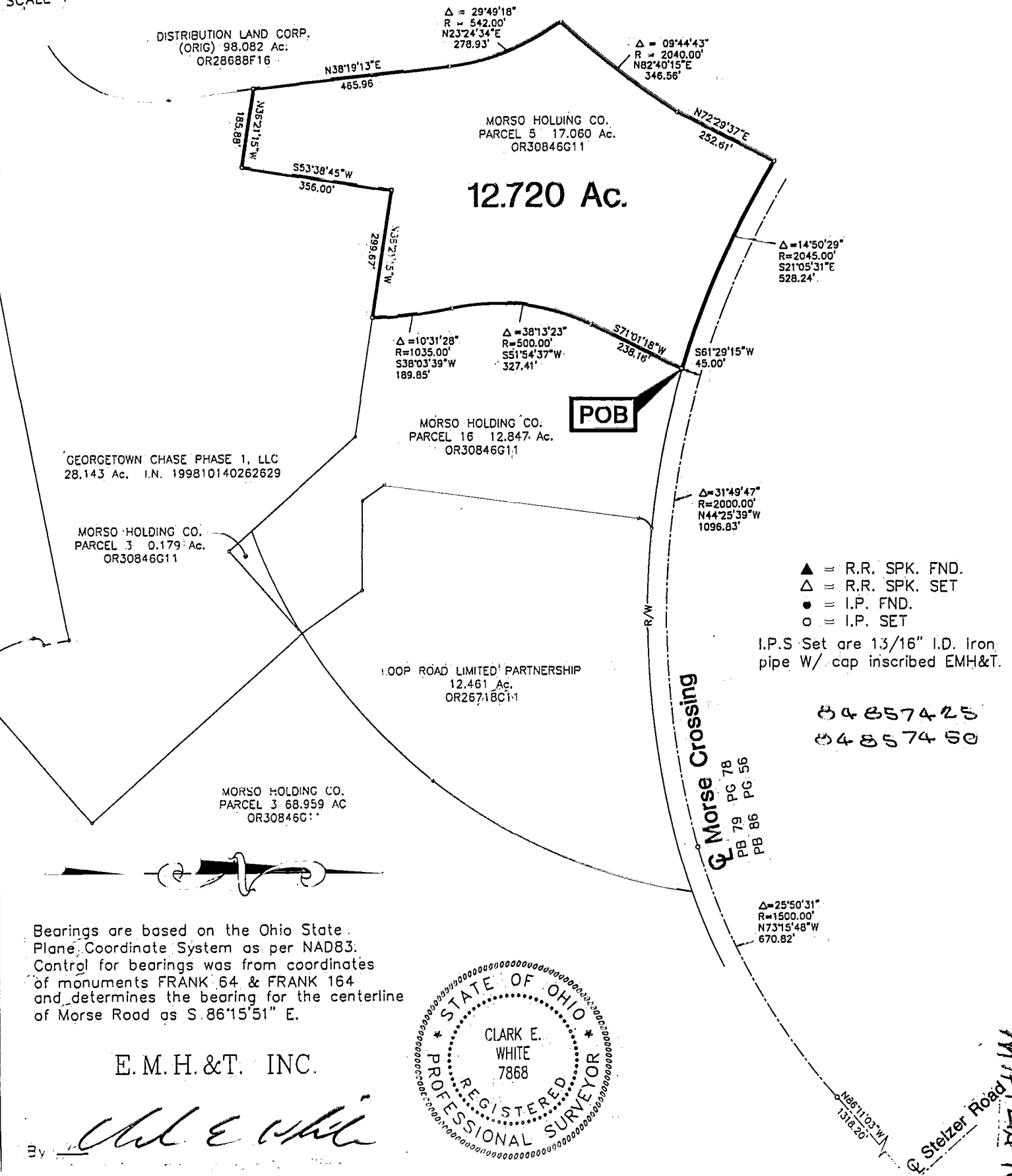
SURVEY OF ACREAGE PARCEL

SECTION 2 TOWNSHIP 1, RANGE 17, UNITED STATES MILITARY LANDS
CITY OF COLUMBUS, FRANKLIN COUNTY, OHIO

84857425
84857450

SCALE 1" = 300'

JULY 16, 1999



▲ = R.R. SPK. FND.
△ = R.R. SPK. SET
● = I.P. FND.
○ = I.P. SET
I.P.S Set are 13/16" I.D. Iron pipe W/ cap inscribed EMH&T.

84857425
84857450

Bearings are based on the Ohio State Plane Coordinate System as per NAD83. Control for bearings was from coordinates of monuments FRANK 64 & FRANK 164 and determines the bearing for the centerline of Morse Road as S.86°15'51" E.

E. M. H. & T. INC.



Clark E. White

0-57-C
MIFELITE TWP