

186607525

0110 07



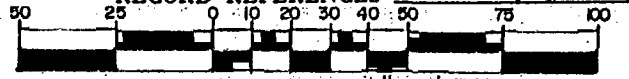
SURVEY OF 1.002 ACRE TRACT BEING PART OF LOT 21, QUARTER TOWNSHIP 4, TOWNSHIP 2, RANGE 16 UNITED STATES MILITARY LANDS, PLAIN TOWNSHIP, FRANKLIN COUNTY, OHIO

SCALE 1" = 50'

○=IRON PIN

APRIL 1, 1989

RECORD REFERENCES D.B. 3483, Pg. 324



GRAPHIC SCALE 1" = 50'

Easement to Sinclair Refining Company in D.B. 1064, Pg. 299 does not pertain to subject property.

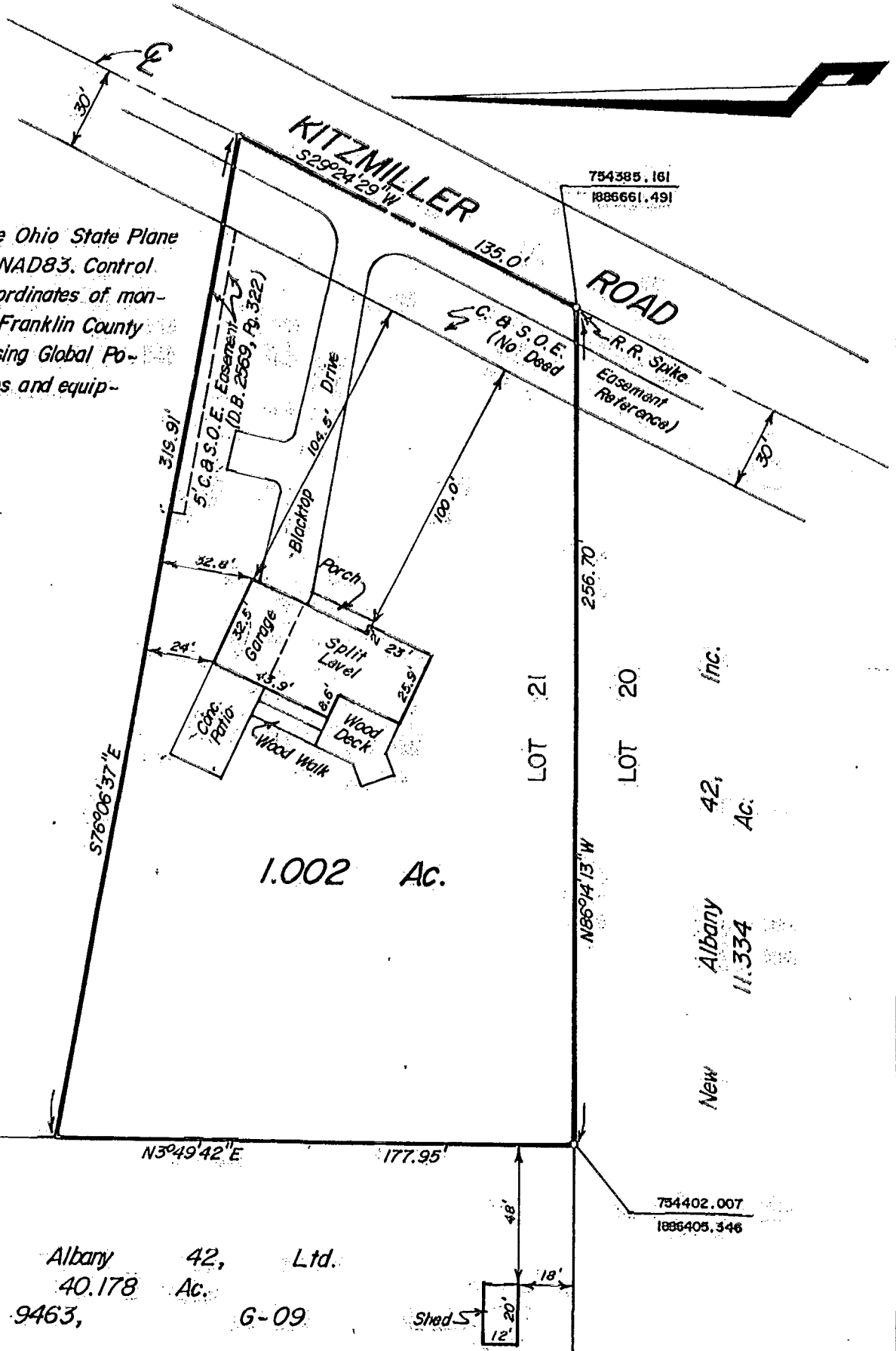
Easement to Ohio Fuel Gas Company in D.B. 882, Pg. 27 does not pertain to subject property.

0-76-E

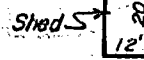
NOTE:

Bearings are based on The Ohio State Plane Coordinate System as per NAD83. Control for bearings was from coordinates of monuments established by the Franklin County Engineering Department, using Global Positioning System procedures and equipment.

E. M. & M. E. Crow
Ac.



New Albany 42, Ltd.
40.178 Ac.
O.R. 9463, G-09



E.M.H.&T. INC.

We hereby declare that the foregoing plat was prepared from an actual survey of the premises and shows the location of the boundary and improvements, and that there are no encroachments either way across the boundary of this lot except as shown hereon.

By James R. Hill
Professional Surveyor No. 6919