



**SURVEY OF ACREAGE PARCEL**  
LOCATED IN QUARTER TOWNSHIP 3, TOWNSHIP 2, RANGE 16  
UNITED STATES MILITARY LANDS  
VILLAGE OF NEW ALBANY, FRANKLIN COUNTY, OHIO

SCALE 1" = 40'

JANUARY 23, 1998



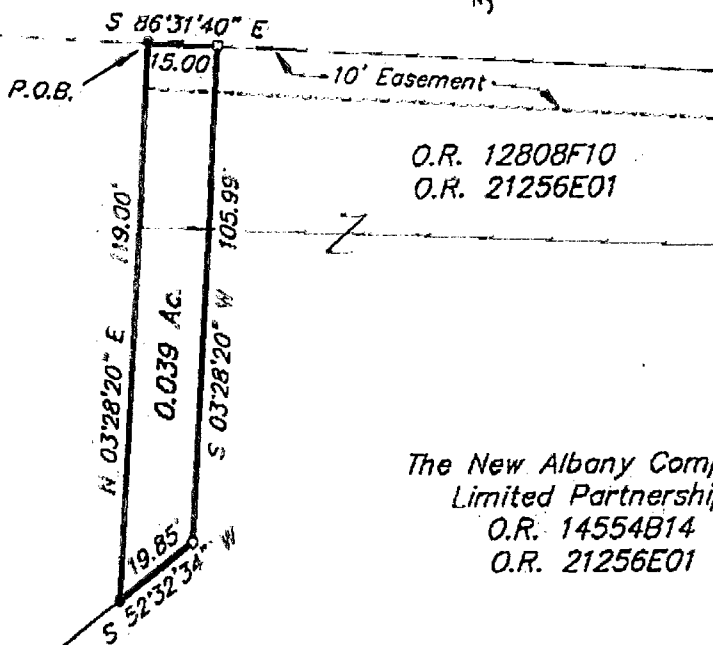
GRAPHIC SCALE  
(IN FEET)

The New Albany  
Country Club  
Section 14  
P.B. 83, Pg. 21-24

BRANDON ROAD

30'

30'



The New Albany Company  
Limited Partnership  
O.R. 14554B14  
O.R. 21256E01

- ▲ R.R. Spk. Fnd.
- △ R.R. Spk. Set
- I.P. Fnd.
- I.P. Set

I.P. set are 3/4" O.D. Iron Pin  
30" long w/cap inscribed EMH&T.



E.M.H.&T. INC.

**BASIS OF BEARINGS:** The bearings shown herein are based on the same meridian as the bearings shown on the plat entitled "The New Albany Country Club Section 14" of record in Plat Book 83, Pages 21-24, in which the centerline of Brandon Road has a bearing of South 86°31'40" East, Recorder's Office, Franklin County, Ohio.

By Clark E. White 1-23-98  
Professional Surveyor No. 7868

87 857 500