



**SURVEY OF 0.216 ACRE TRACT**  
 LOCATED IN QUARTER TOWNSHIP 3, TOWNSHIP 2, RANGE 16  
 UNITED STATES MILITARY LANDS  
 VILLAGE OF NEW ALBANY, FRANKLIN COUNTY, OHIO

SCALE 1" = 100'

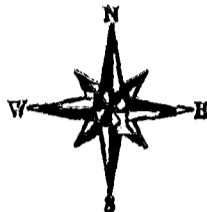
—○— IRON PIN

MAY 12, 1995

RECORD REFERENCES

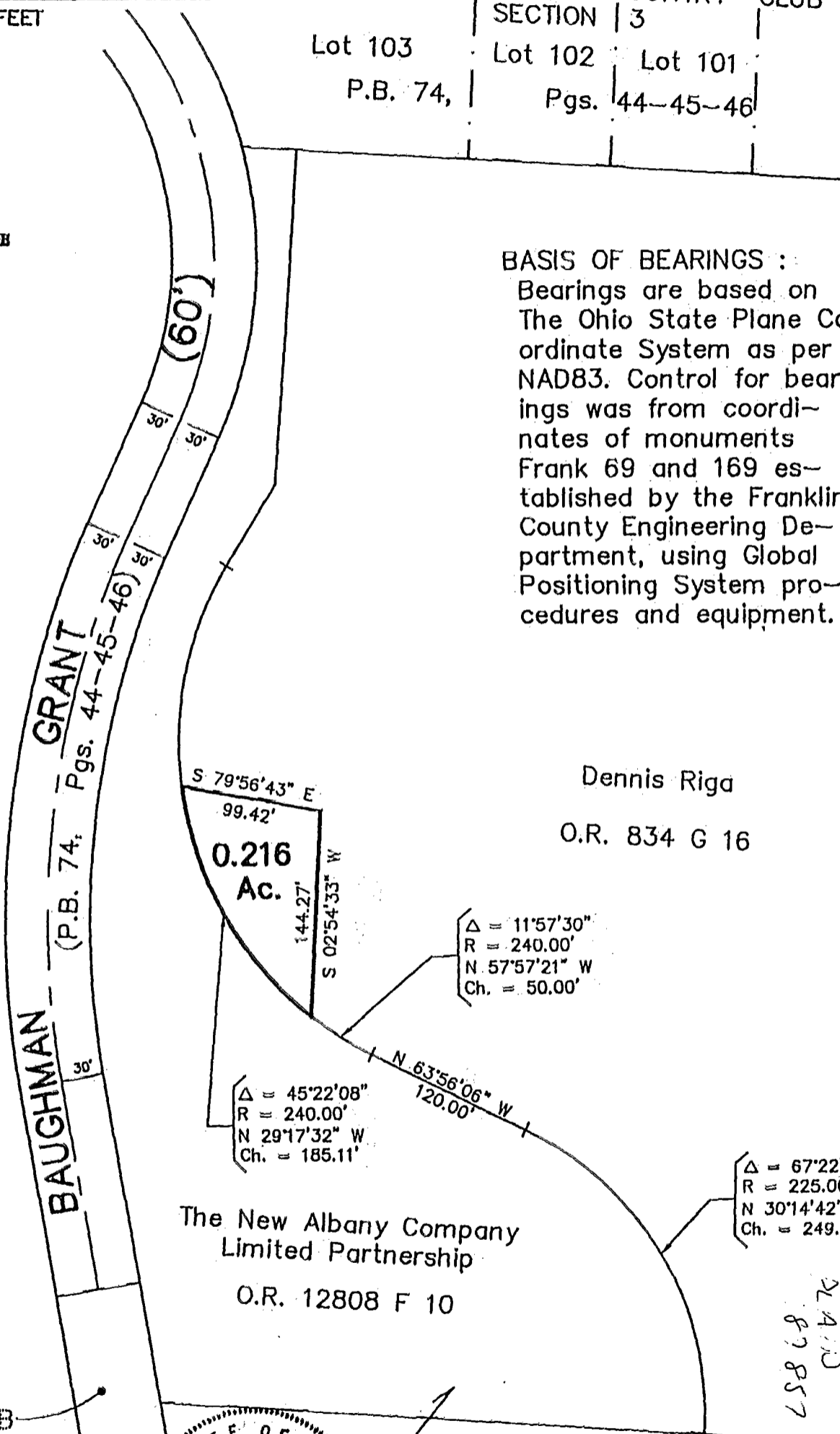


IN FEET



THE NEW ALBANY COUNTRY CLUB
SECTION 3
Lot 103      Lot 102      Lot 101
P.B. 74,      Pgs. 44-45-46

**BASIS OF BEARINGS :**  
 Bearings are based on The Ohio State Plane Coordinate System as per NAD83. Control for bearings was from coordinates of monuments Frank 69 and 169 established by the Franklin County Engineering Department, using Global Positioning System procedures and equipment.



Dennis Riga

O.R. 834 G 16

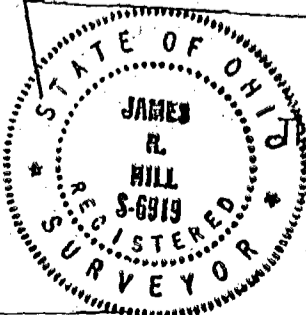
The New Albany Company  
 Limited Partnership

O.R. 12808 F 10

PROPOSED  
 NEW ALBANY  
 COUNTRY CLUB  
 SECTION 14

**E.M.H.&T. INC.**

By *James R. Hill*  
 Professional Surveyor No. 6919



The New Albany Company  
 Limited Partnership

O.R. 12808 F 10

525

525  
 87857  
 525  
 0-750  
 525