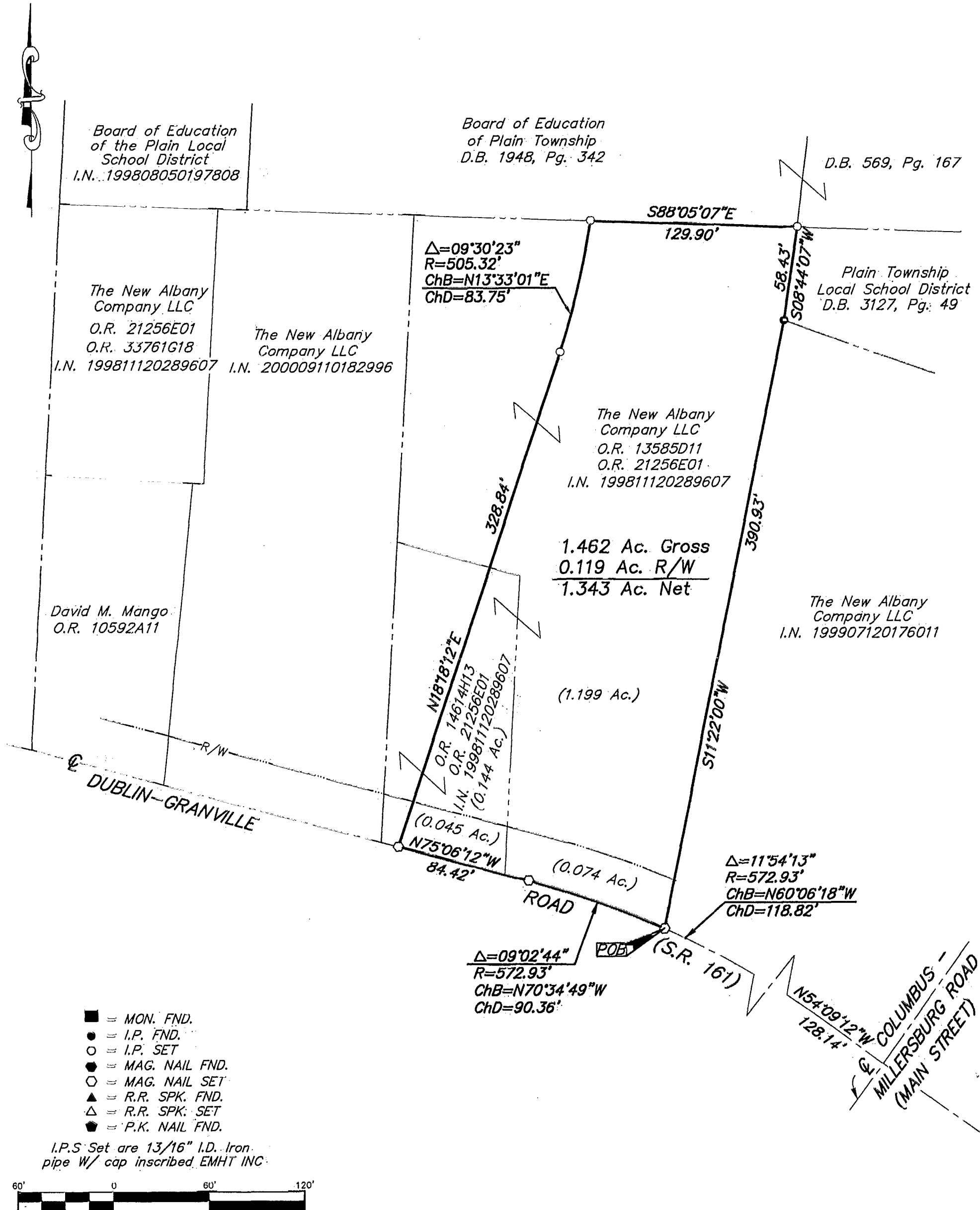


SURVEY OF ACREAGE PARCEL
 LOCATED IN
 FARM LOT 39, QUARTER TOWNSHIP 4, TOWNSHIP 2, RANGE 16
 UNITED STATES MILITARY LANDS
 VILLAGE OF NEW ALBANY, FRANKLIN COUNTY, OHIO

SCALE 1" = 60'

MARCH 1, 2002



STATE OF OHIO
 JOHN C. DODGION
 8069
 REGISTERED PROFESSIONAL SURVEYOR

E.M.H.&T. INC.

By *John C. Dodgion*
 Professional Surveyor No. 8069

BASIS OF BEARINGS: Bearings are based on the Ohio State Plane Coordinate System as per NAD83. Control for bearings was from coordinates of monuments FRANK 78 & FRANK 178, established by the Franklin County Engineering Department.

Q:\PROJECT\20020344.01\DWG\20344BY.DWG - G XREFS: - PLOTTED BY JBUSHBY - March 01, 2002 - 2:59 PM