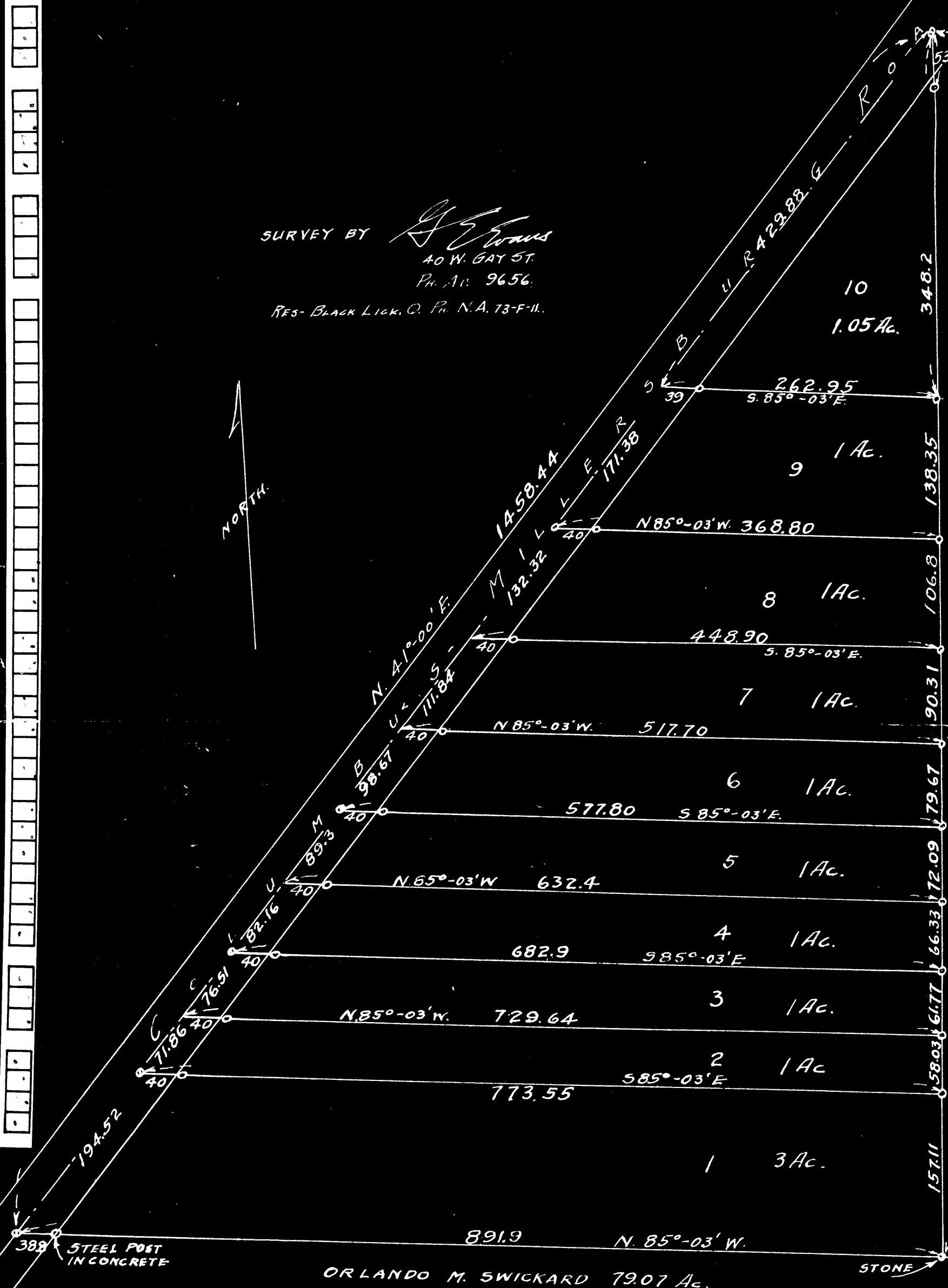


SURVEY BY

*G. S. Evans*  
40 W. GAY ST.  
Ph. A. 9656.

RES- BLACK LICK, O. P. N.A. 73-F-11.



MARY R. JOHNSON 39.48 AC.

ORLANDO M. SWICKARD 79.07 AC.

SUBDIVISION OF THE UNDIVIDED PART OF THE  
H. MCKINLEY SWICKARD ET. AL. 12.05 AC.  
IN 1/4 TP. 3. TP. 2. RANGE 16. U.S.M. LANDS - PLAIN TWP.  
FRANKLIN CO. O. - NOV. -39. SCALE 1" = 100'. O = IRON PIPE  
⊙ = R. R. SPIKE OR BOLT IN ROAD