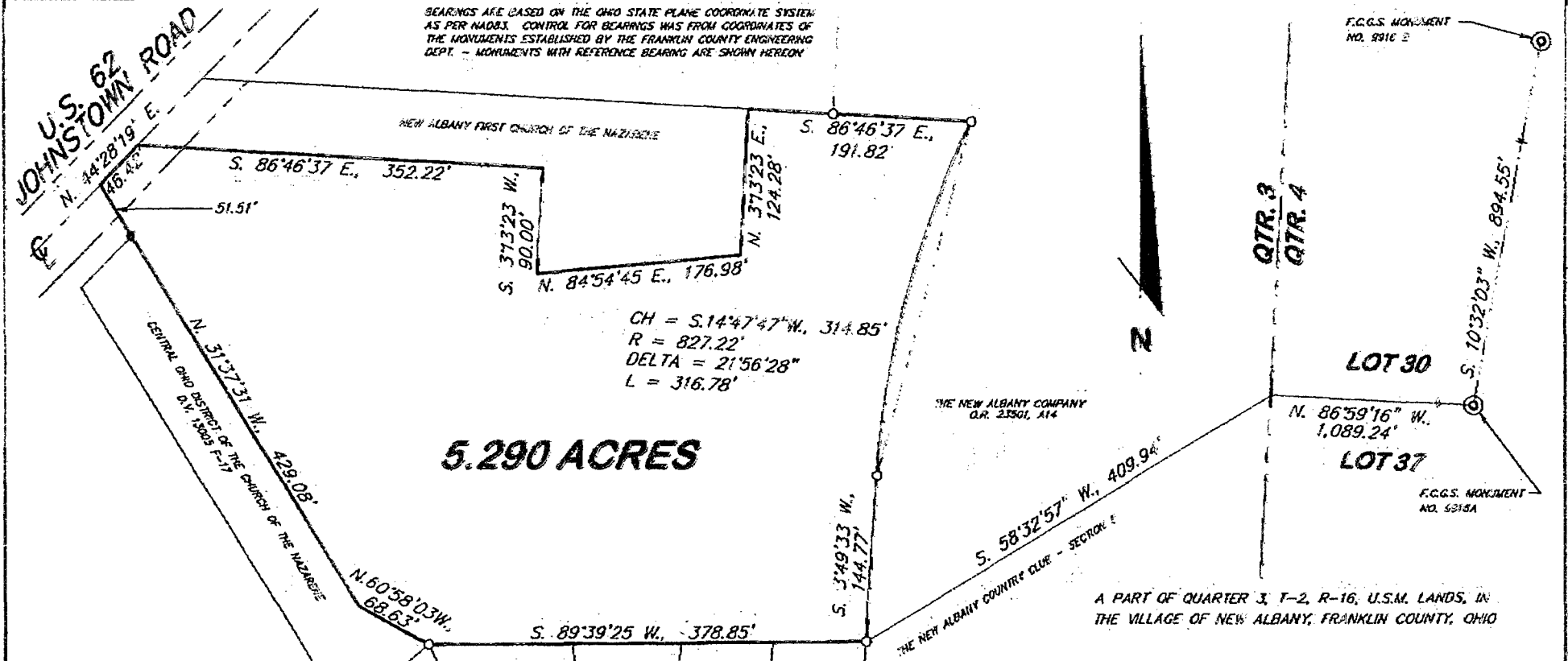


87 857 550

BEARINGS ARE BASED ON THE OHIO STATE PLANE COORDINATE SYSTEM AS PER NAD83. CONTROL FOR BEARINGS WAS FROM COORDINATES OF THE MONUMENTS ESTABLISHED BY THE FRANKLIN COUNTY ENGINEERING DEPT. - MONUMENTS WITH REFERENCE BEARING ARE SHOWN HEREON

F.C.G.S. MONUMENT NO. 9316 B



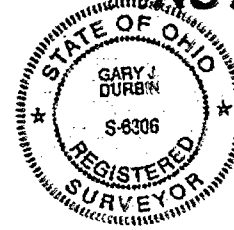
5.290 ACRES

CH = S.14°47'47\" W. 314.85'
R = 827.22'
DELTA = 21°56'28\"
L = 316.78'

**PLAT OF SURVEY FOR
FIRST CHURCH OF THE NAZARENE
D.V. 3770, P. 61**

PREPARED BY
DURBIN ENGINEERING
CONSULTING ENGINEERS AND SURVEYORS
47 LANDRUM - P.O. BOX 577
CENTERBURG, OH 43011-0577
(740) 825-5644

APRIL 27, 1998
○ PIPE MARKER FOUND
● IRON PIN SET
SCALE: 1" = 100'
0 50 100 200



I HEREBY CERTIFY THAT THIS PLAT REPRESENTS A TRUE AND CORRECT SURVEY AND ALL MEASUREMENTS WERE MADE IN ACCORDANCE WITH CHAPTER 4733-37 OF THE OHIO ADMINISTRATIVE CODE.

BY
GARY J. DURBIN, P.E., P.S.

E-37981
S-8306