

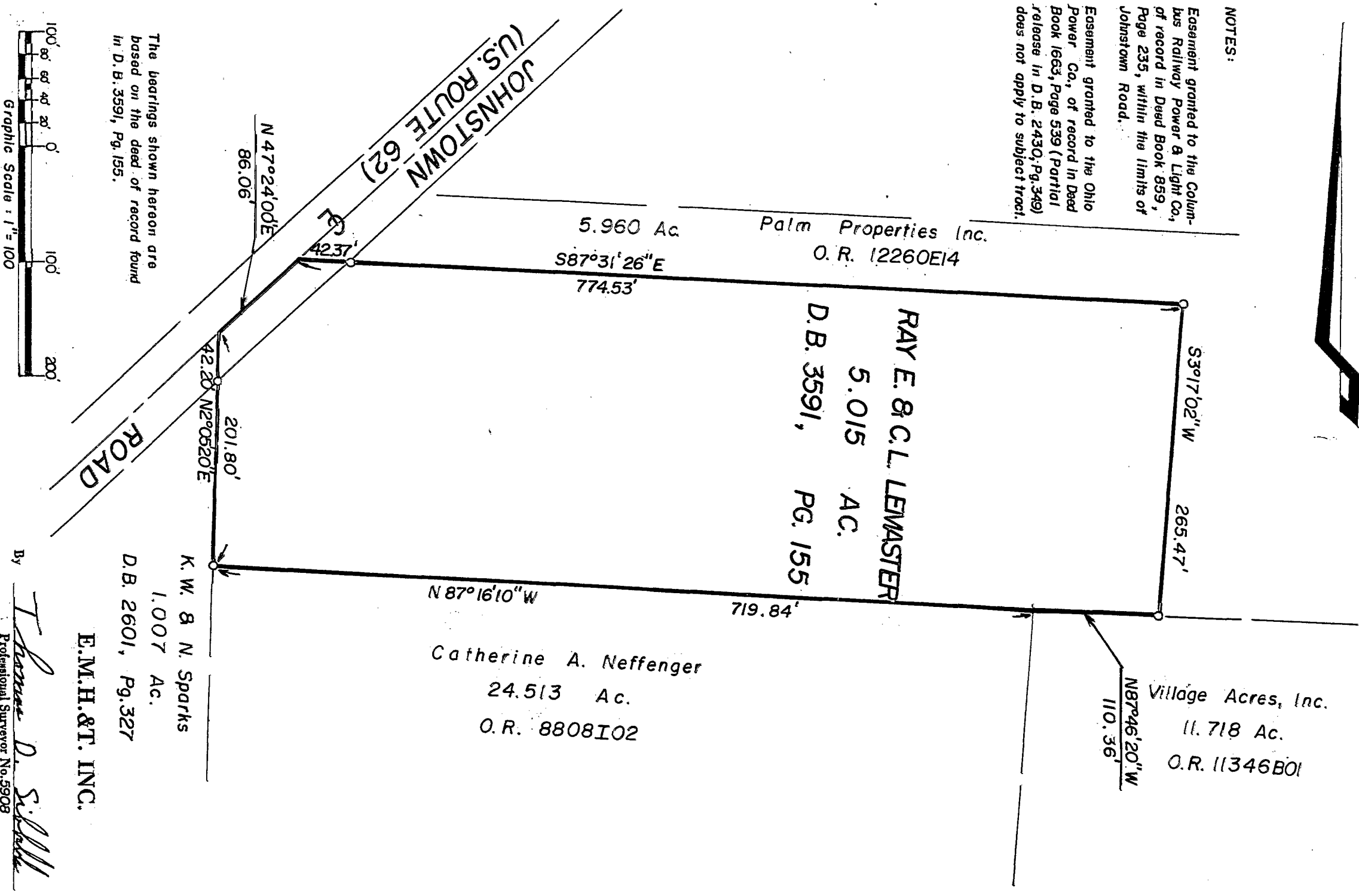


**SURVEY OF A 5.015 ACRE TRACT**  
 Located in Lot No. 5, Third Quarter, Township 2, Range 16,  
 187357500  
 187357475  
 United States Military Lands  
 Plain Township, Franklin County, Ohio

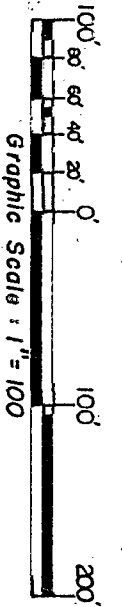
SCALE 1" = 100'  
 October 10, 1988  
 O = Iron Pin  
 RECORD REFERENCES D. B. 3591, Pg. 155

**NOTES:**  
 Easement granted to the Columbus Railway Power & Light Co., of record in Deed Book 859, Page 235, within the limits of Johnstown Road.

Easement granted to the Ohio Power Co., of record in Deed Book 1663, Page 539 (Partial release in D. B. 2430, Pg. 349) does not apply to subject tract.



The bearings shown hereon are based on the deed of record found in D. B. 3591, Pg. 155.



By *T. Schmitt*  
 Professional Surveyor No. 5908