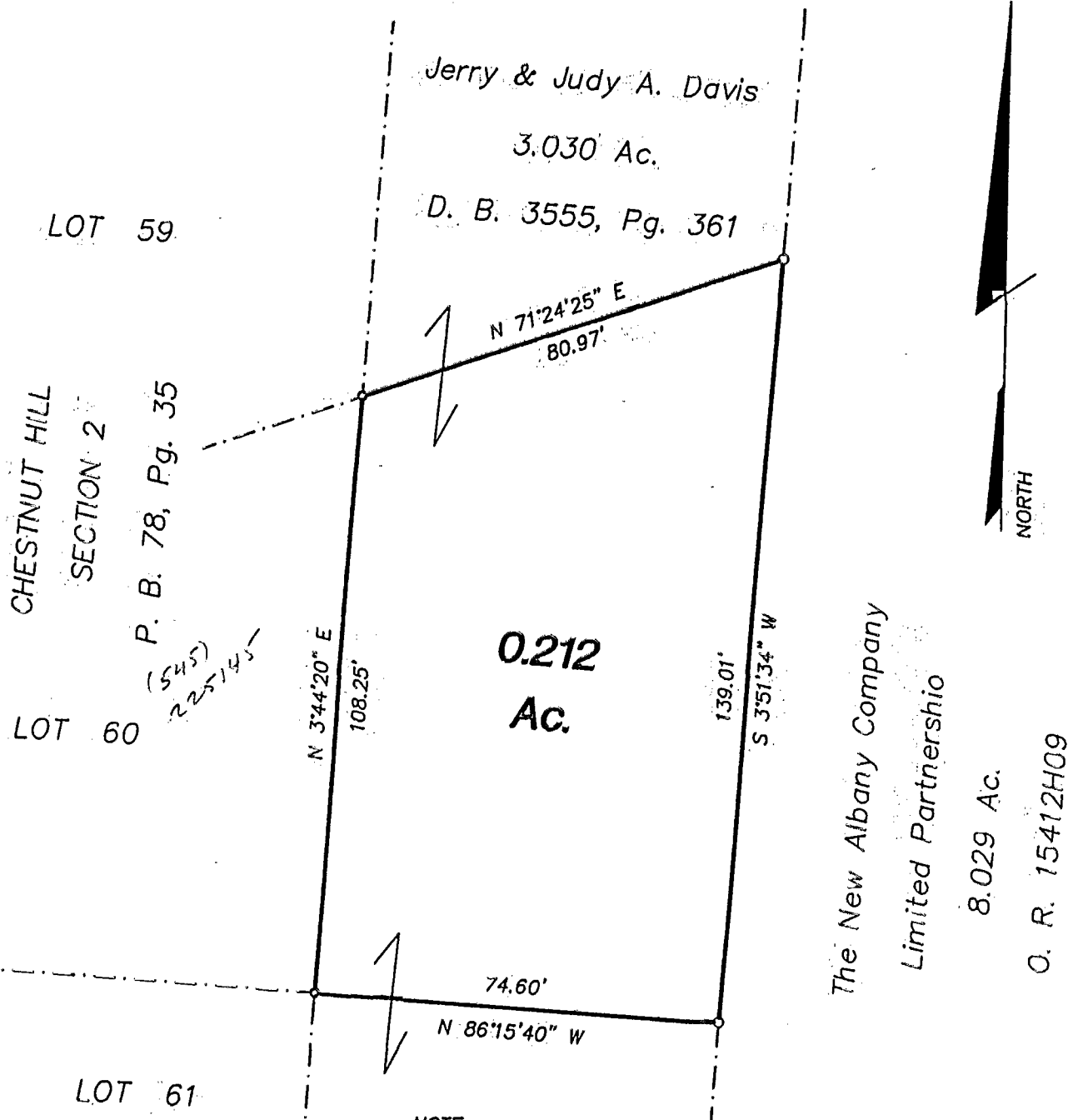


# SURVEY OF ACREAGE PARCEL

LOCATED IN QUARTER TOWNSHIP 3, TOWNSHIP 2, RANGE 16,

UNITED STATES MILITARY LANDS

PLAIN TOWNSHIP, FRANKLIN COUNTY, OHIO



Surveyed & Platted

By

**EVANS, MECHWART, HAMBLETON, & TILTON INC.**

CONSULTING ENGINEERS AND SURVEYORS

170 MILL STREET

GAHANNA, OHIO 43230

614/471-5150

- = I.P. Fnd.
- = I.P. Set

By

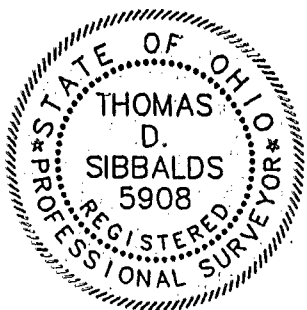
*Thomas D. Sibbalds*

Thomas D. Sibbalds

Registered Surveyor No. 5908

SCALE 1" = 30'

AUGUST 26, 1997



GRAPHIC SCALE 1" = 30'