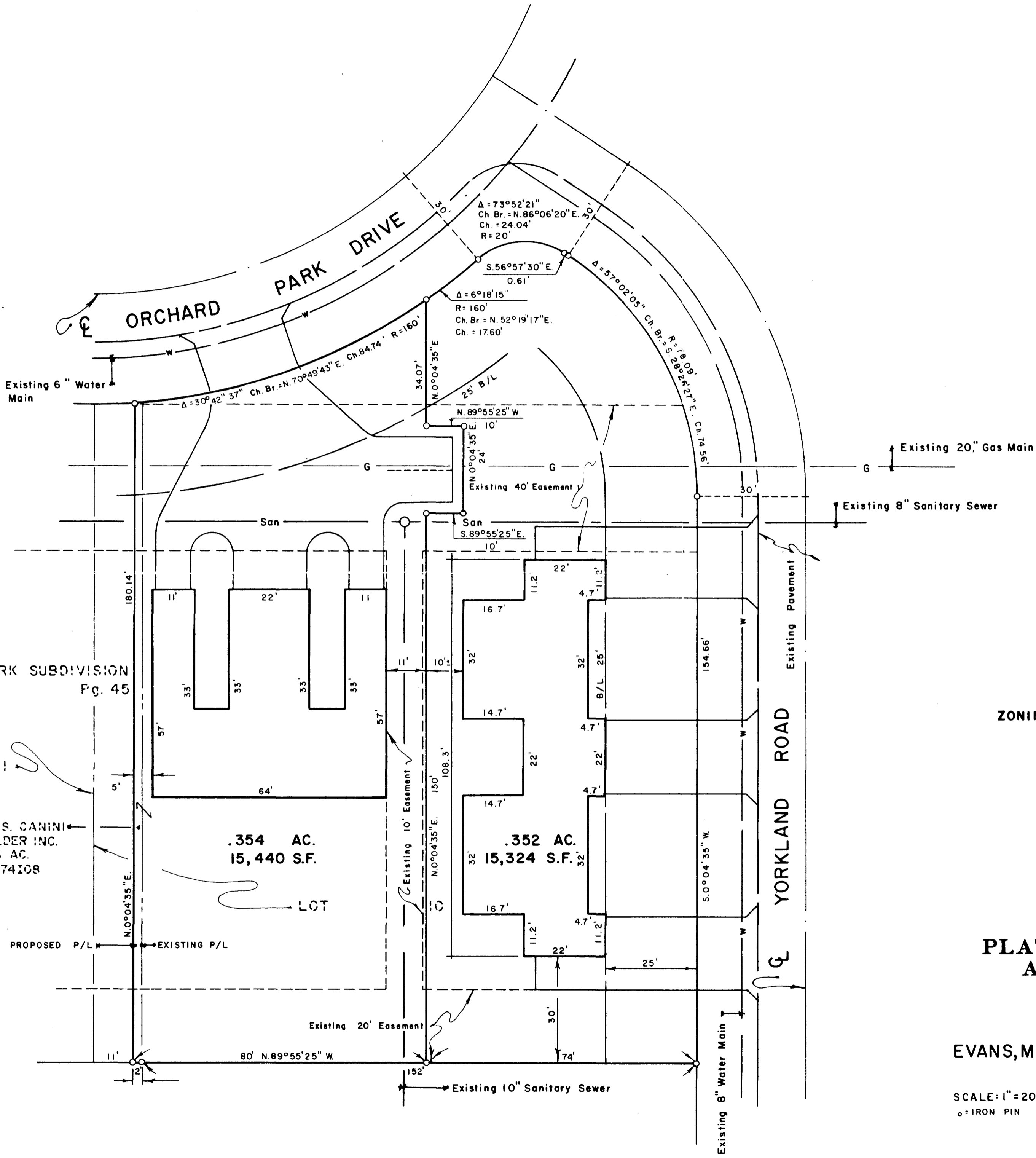


N-258-M



ORCHARD PARK SUBDIVISION
PB. 55 Pg. 45

LOT II

VALERIO S. CANINI
BUILDER INC.
.008 AC.
O.R. 04674108

.354 AC.
15,440 S.F.

LOT I

.352 AC.
15,324 S.F.

ZONING AR-12

**PLAT OF ACREAGE PARCELS
ALSO BEING PART OF
LOT 10
ORCHARD PARK**

PREPARED BY
EVANS, MECHWART, HAMBLETON & TILTON, INC.
CONSULTING ENGINEERS & SURVEYORS
GAHANNA, OHIO

SCALE: 1" = 20'
○ = IRON PIN

DECEMBER 1983
Revised: AUGUST 1984

By *E. E. Walker*
Registered Surveyor 4965