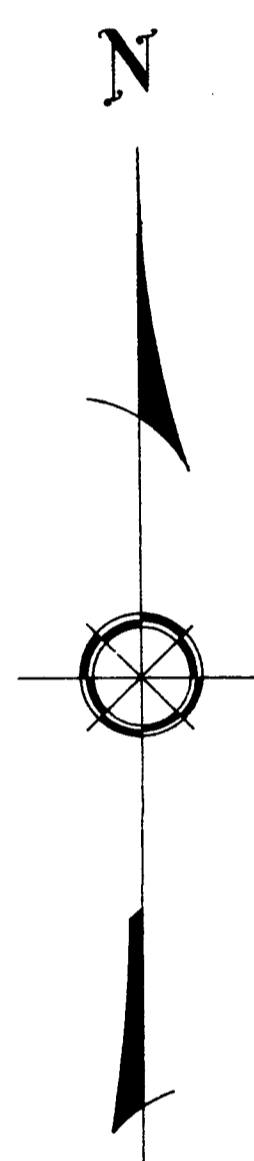
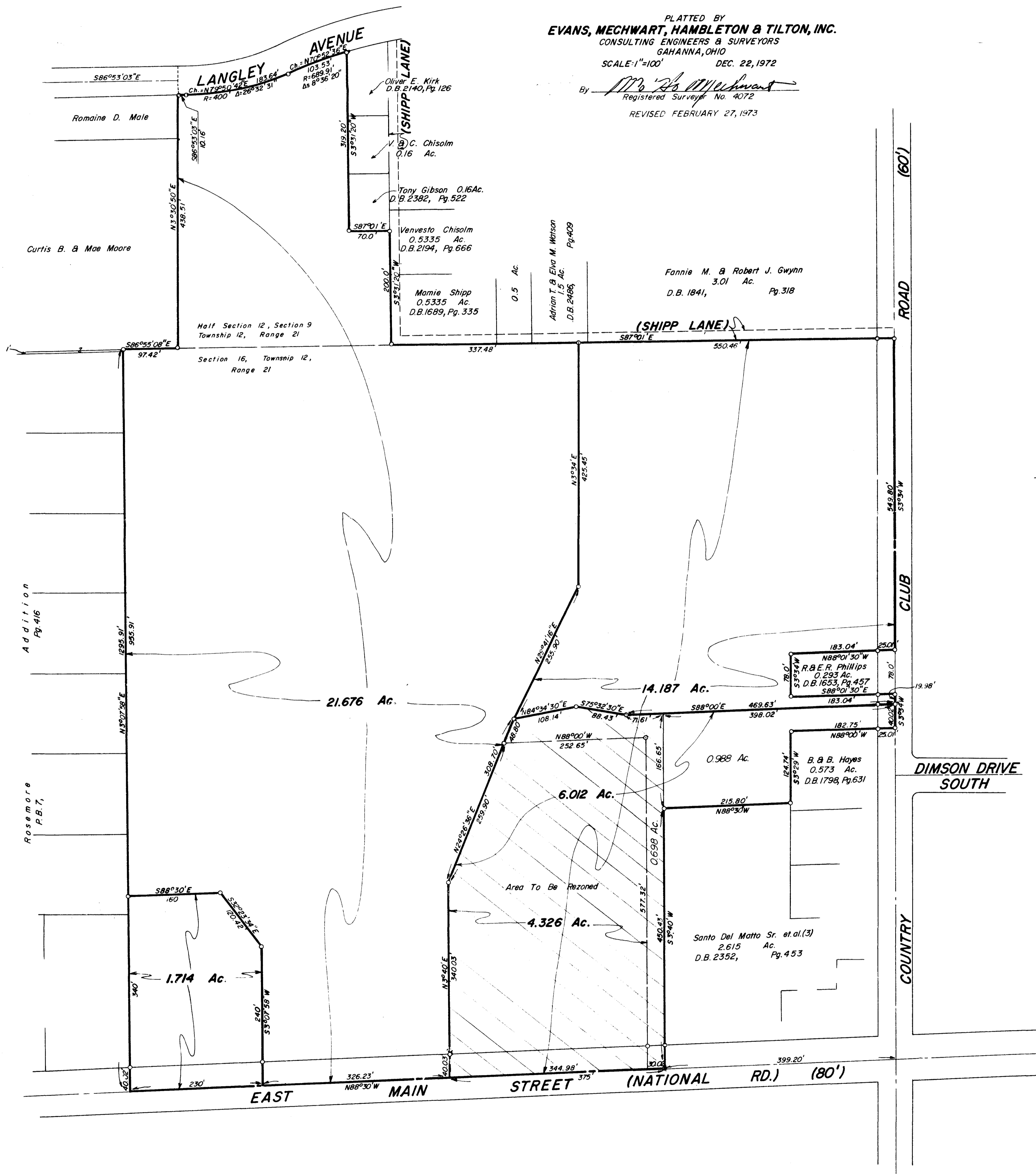


**PLAT OF ACREAGE PARCELS**  
LOCATED IN SECTIONS 9&16 OF TOWNSHIP 12, RANGE 21, REFUGEE LANDS  
CITY OF WHITEHALL, FRANKLIN COUNTY, OHIO

PLATTED BY  
**EVANS, MECHWART, HAMBLETON & TILTON, INC.**  
CONSULTING ENGINEERS & SURVEYORS  
GAHANNA, OHIO  
SCALE: 1"=100' DEC. 22, 1972

By *M. H. Mechwart*  
Registered Surveyor No. 4072  
REVISED FEBRUARY 27, 1973



2910 120 017 059 W MA/W W COUNTRY CLUB 1972 1021 003