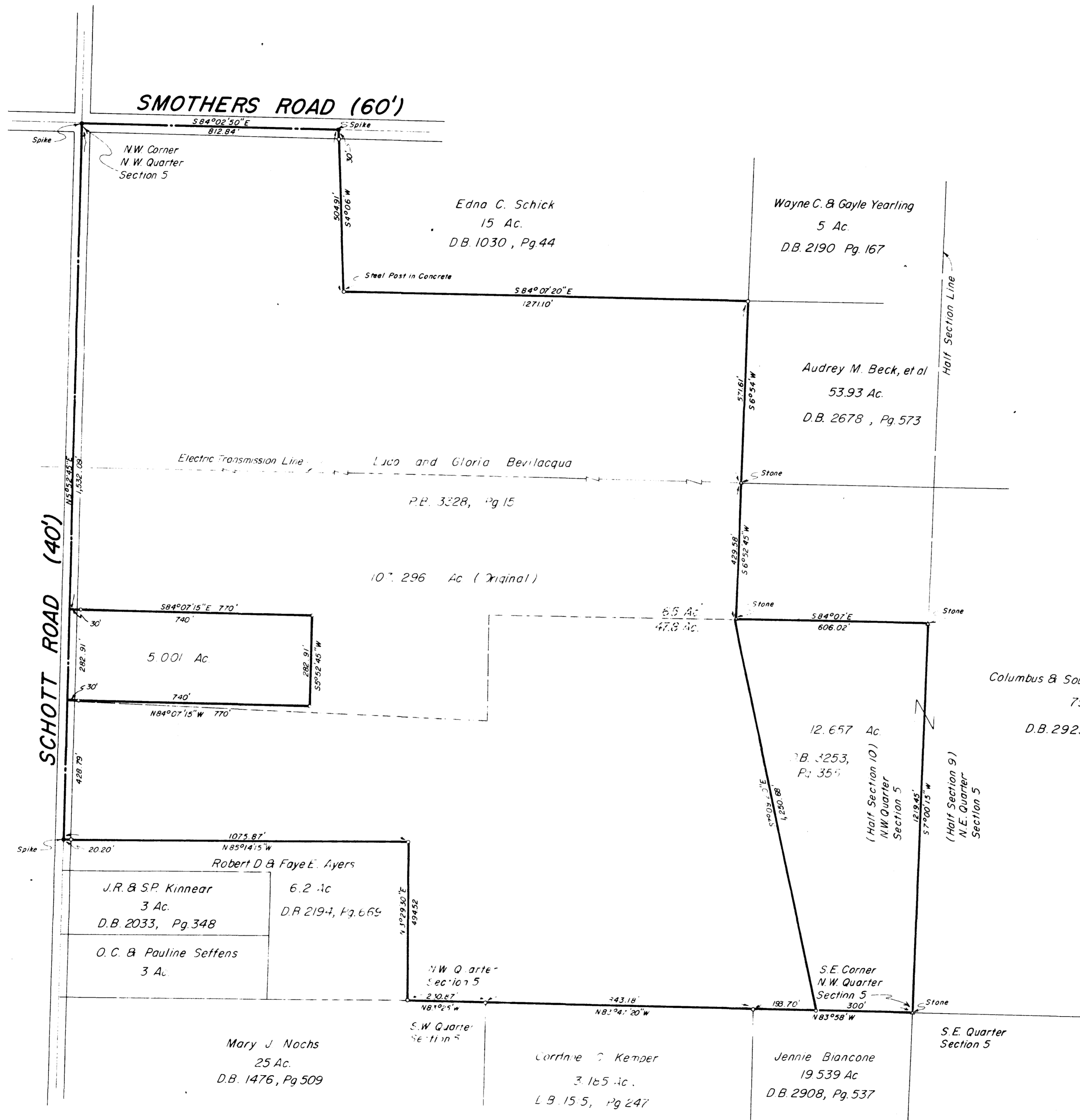


SURVEY OF ACREAGE PARCELS
 LOCATED IN
 HALF SECTION 10, SECTION 5, QUARTER TOWNSHIP 2, TOWNSHIP 2, RANGE 16
 UNITED STATES MILITARY LANDS
 PLAIN TOWNSHIP, FRANKLIN COUNTY OHIO



N

SURVEYED & PLATTED
 BY
EVANS, MECHWART, HAMBLETON & TILTON, INC.
 CONSULTING ENGINEERS & SURVEYORS
 GAHANNA, OHIO

SCALE: 1" = 200'
 o = Iron Pin
 * = R.R. Spike
 Δ = Stone
 JANUARY 14, 1969
 Revised June 3, 1986

BY *W. H. Mechwart*
 REGISTERED SURVEYOR NO. 4072