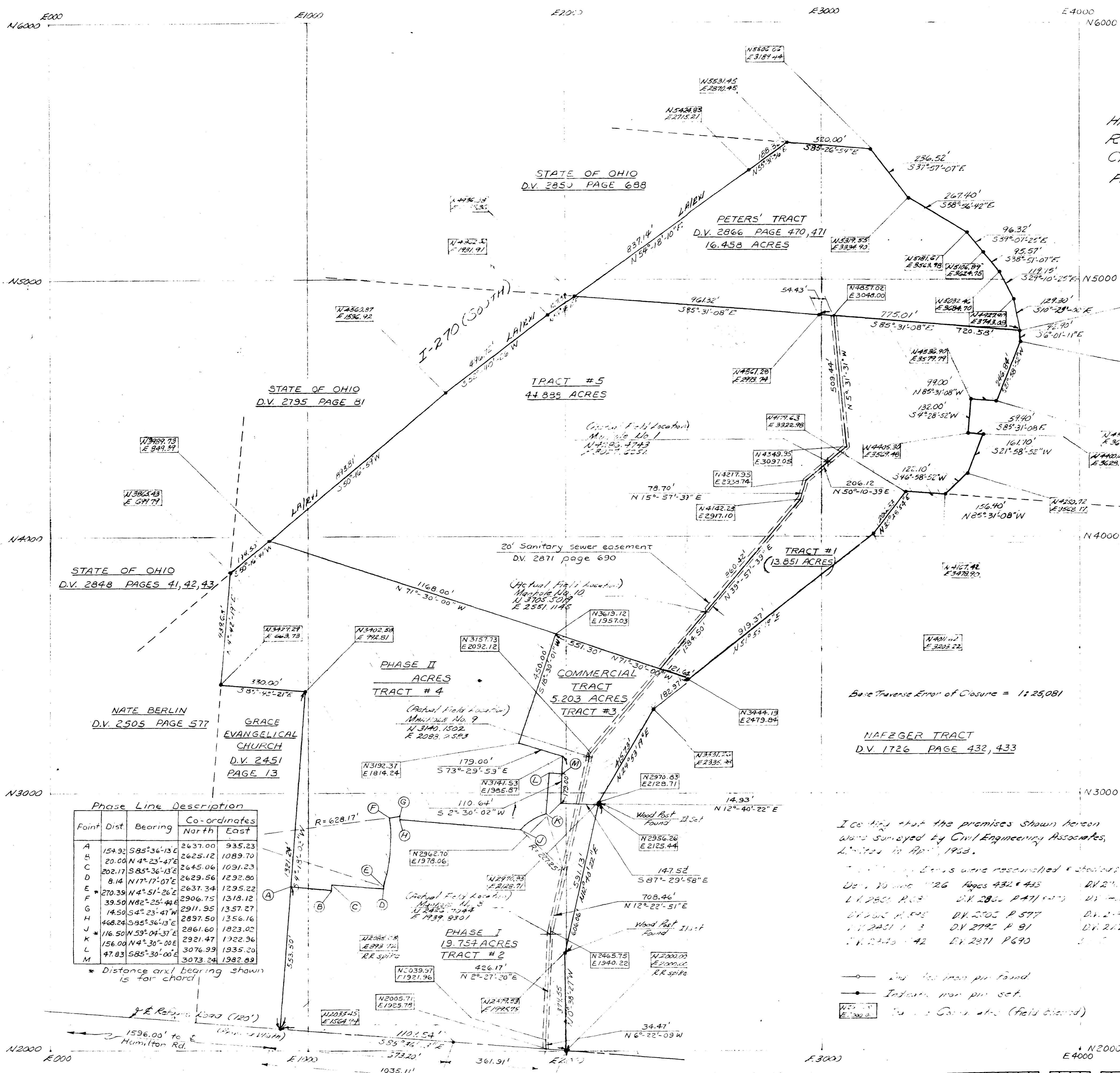


**CAMBRIDGE STATION
OF
COLUMBUS**

BOUNDARY SURVEY

SCALE: 1" = 200'

HALF SECTIONS 48 & 49, TOWNSHIP 12,
RANGE 21, REFUGEE LANDS
CITY OF COLUMBUS, COUNTY OF
FRANKLIN, STATE OF OHIO



Phase Line Description

Point	Dist	Bearing	Co-ordinates North	East
A	154.92	S85°36'13\"	2637.00	935.23
B	20.00	N4°23'47\"	2625.12	1089.70
C	202.17	S85°36'13\"	2645.06	1091.23
D	8.14	N17°17'07\"	2629.56	1292.80
E	270.39	N4°51'26\"	2637.34	1295.22
F	39.50	N82°25'44\"	2906.75	1318.12
G	14.50	S4°23'41\"	2911.95	1357.27
H	468.24	S85°36'13\"	2897.50	1356.16
I	116.50	N59°04'37\"	2861.60	1823.02
J	156.00	N4°30'00\"	2921.47	1922.96
K	47.83	S85°30'00\"	3076.99	1935.20
L			3073.24	1982.89
M				

* Distance and bearing shown is for chord

Base Traverse Error of Closure = 1:25,081

I certify that the premises shown hereon
was surveyed by Civil Engineering Associates,
Limited in April, 1968.

- Deeds were researched & checked
- D.V. 2850 P. 68
- D.V. 2866 P. 470, 471
- D.V. 2871 P. 690
- D.V. 2883 P. 577
- D.V. 2895 P. 81
- D.V. 2925 P. 42
- D.V. 2927 P. 690
- D.V. 2928 P. 197, 198

- Ind. iron pin found
- Ind. iron pin set
- Ind. copper wire (field checked)

CIVIL ENGINEERING ASSOCIATES, LIMITED
Civil Engineers Land Surveyors
COLUMBUS, OHIO

Carl B. Maguire, A18168
REGISTERED SURVEYOR No. 5209
Office: 4-22-68
CM- Revised 5-8-68 - Final Tracts & Easements Added



3700 120 068 005 W REFUGEE FRANKLIN OHIO 1968 003