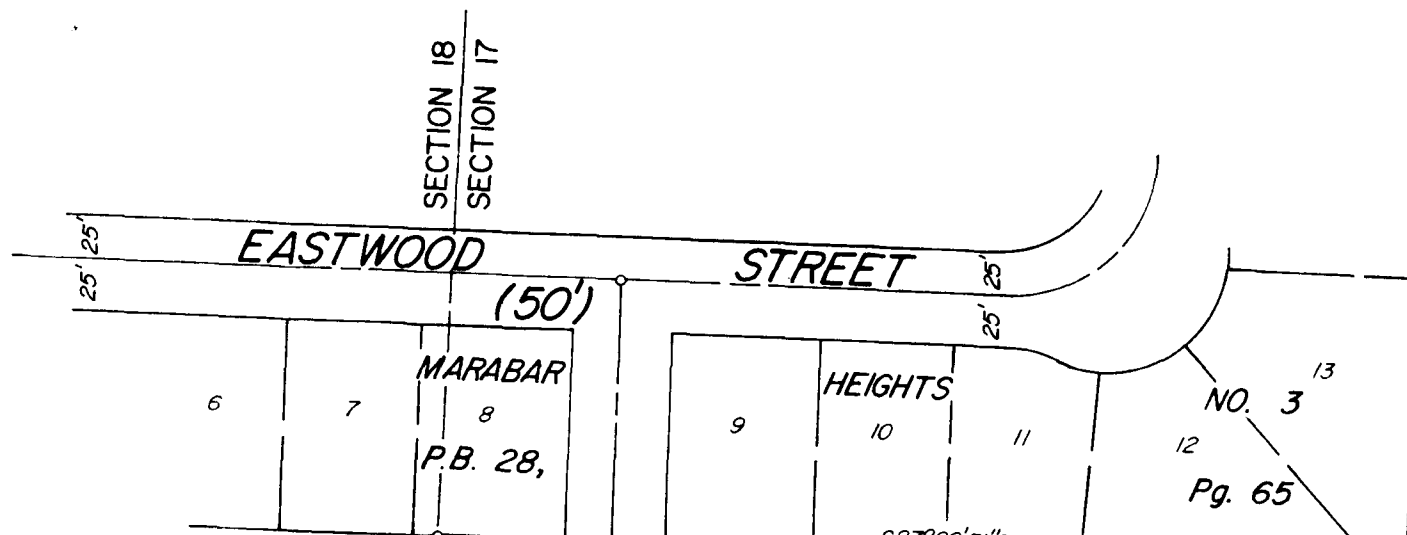


SURVEY OF 15.977 ACRE TRACT
Located In Sections 17 & 18, Township 16, Range 20
Refugee Lands
City Of Reynoldsburg, Franklin County, Ohio

The basis of bearings is based on the same meridian as the centerline of Palmer Road (S87°15'00"E) as recorded by deed in Official Record 9234, C-04.



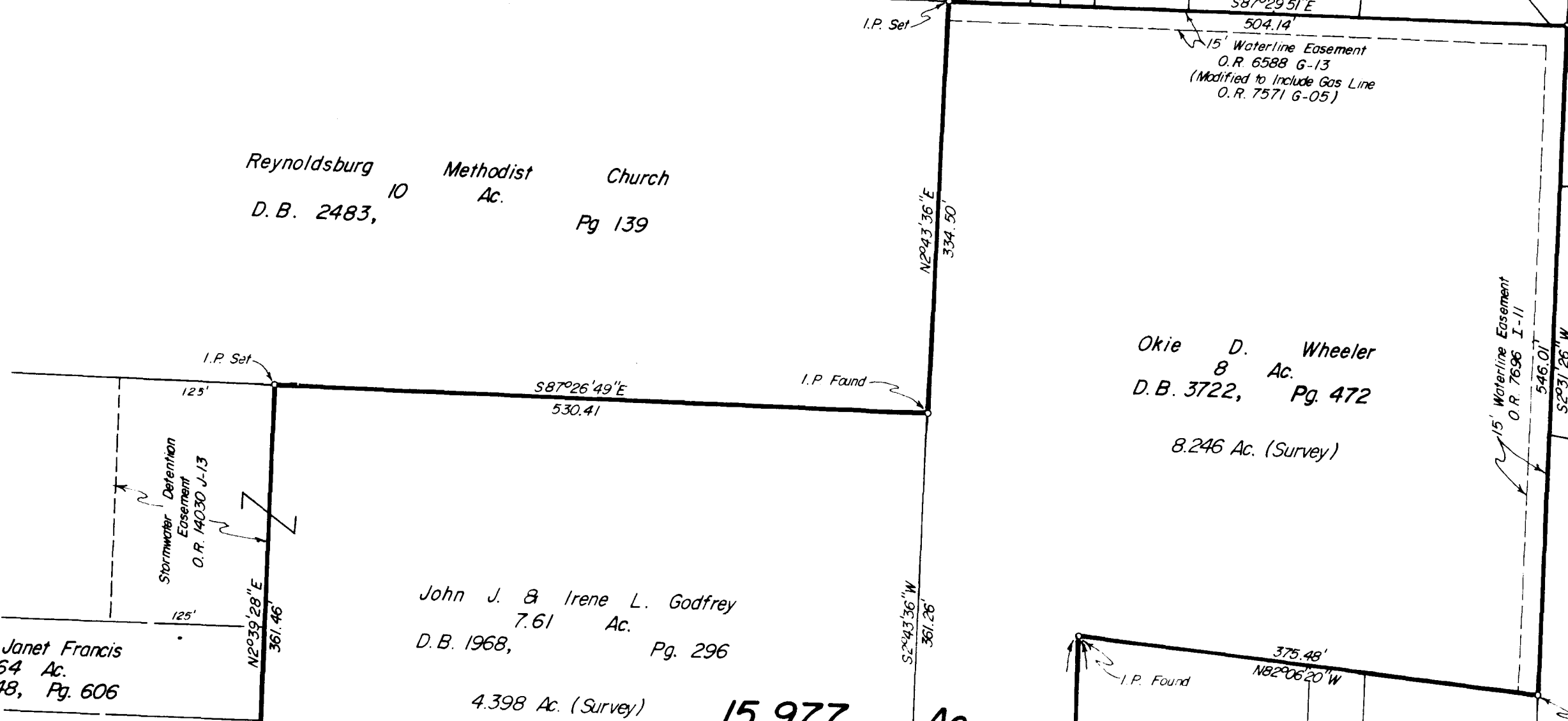
Dorothy A. Bates
14.717 Ac.
D.B. 3159, Pg. 527

Reynoldsburg Methodist Church
10 Ac.
D.B. 2483, Pg. 139

Walter L. & Janice J. English
1.410 Ac.
O.R. 07895, F-09

Okie D. Wheeler
8 Ac.
D.B. 3722, Pg. 472

Virgil L. & Delores Smathers
1.319 Ac.
O.R. 07571, G-18



John J. & Irene L. Godfrey
7.61 Ac.
D.B. 1968, Pg. 296

8.246 Ac. (Survey)

John & Janet Francis
1.364 Ac.
D.B. 3048, Pg. 606

William & Joan Miller
1.636 Ac.
D.B. 3063, Pg. 653

Bradley & Barbara Wilson
3.10 Ac.
O.R. 09234, C-04

Bradley D. & Barbara R. Wilson
3.333 Ac.
O.R. 09234, C-02

3.332 Ac. (Survey)

Herbert & Annie West
1 Ac.
D.B. 3754, Pg. 293

F. & G. W. Coon
0.50 Ac.
D.B. 1702, Pg. 204

Helen Cracraft
0.50 Ac.
D.B. 3441, Pg. 542

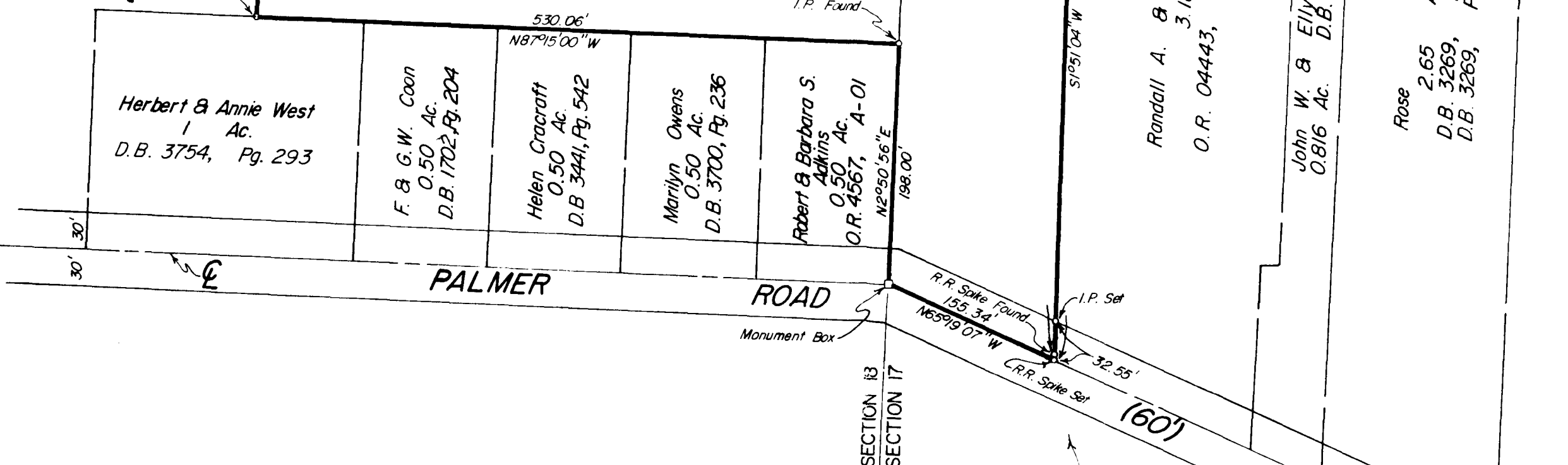
Marilyn Owens
0.50 Ac.
D.B. 3700, Pg. 236

Robert & Barbara S. Adkins
0.50 Ac.
O.R. 4567, A-01

Randall A. & Pamela S. Roberts
3.184 Ac.
O.R. 04443, F-20

John W. & Eily M. Creager
0.816 Ac.
D.B. 3150, Pg. 36

Rose Oravec
2.65 Ac.
D.B. 3289, Pg. 470
D.B. 3269, Pg. 472



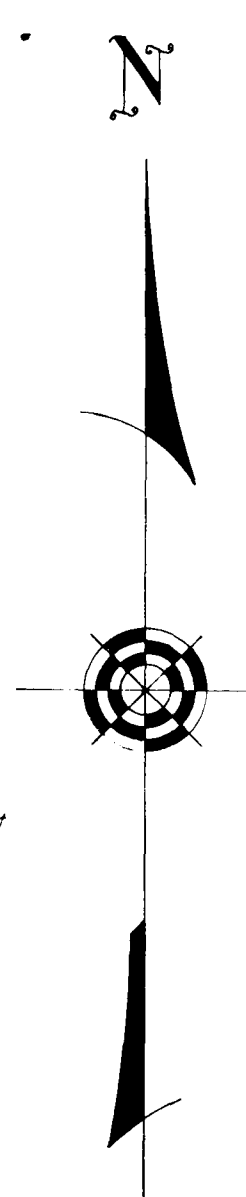
SURVEYED & PLATTED
BY
EVANS, MECHWART, HAMBLETON & TILTON, INC.
CONSULTING ENGINEERS AND SURVEYORS
GAHANNA, OHIO

By *James P. Hill*
Professional Surveyor No. 6919

SCALE: 1" = 100'

= IRON PIN

FEBRUARY 6, 1989
Revised OCTOBER 9, 1989



Easement to Ohio Midland Light & Power Company in D.B. 1225, Pg. 388 is within the right-of-way limits of Palmer Road.