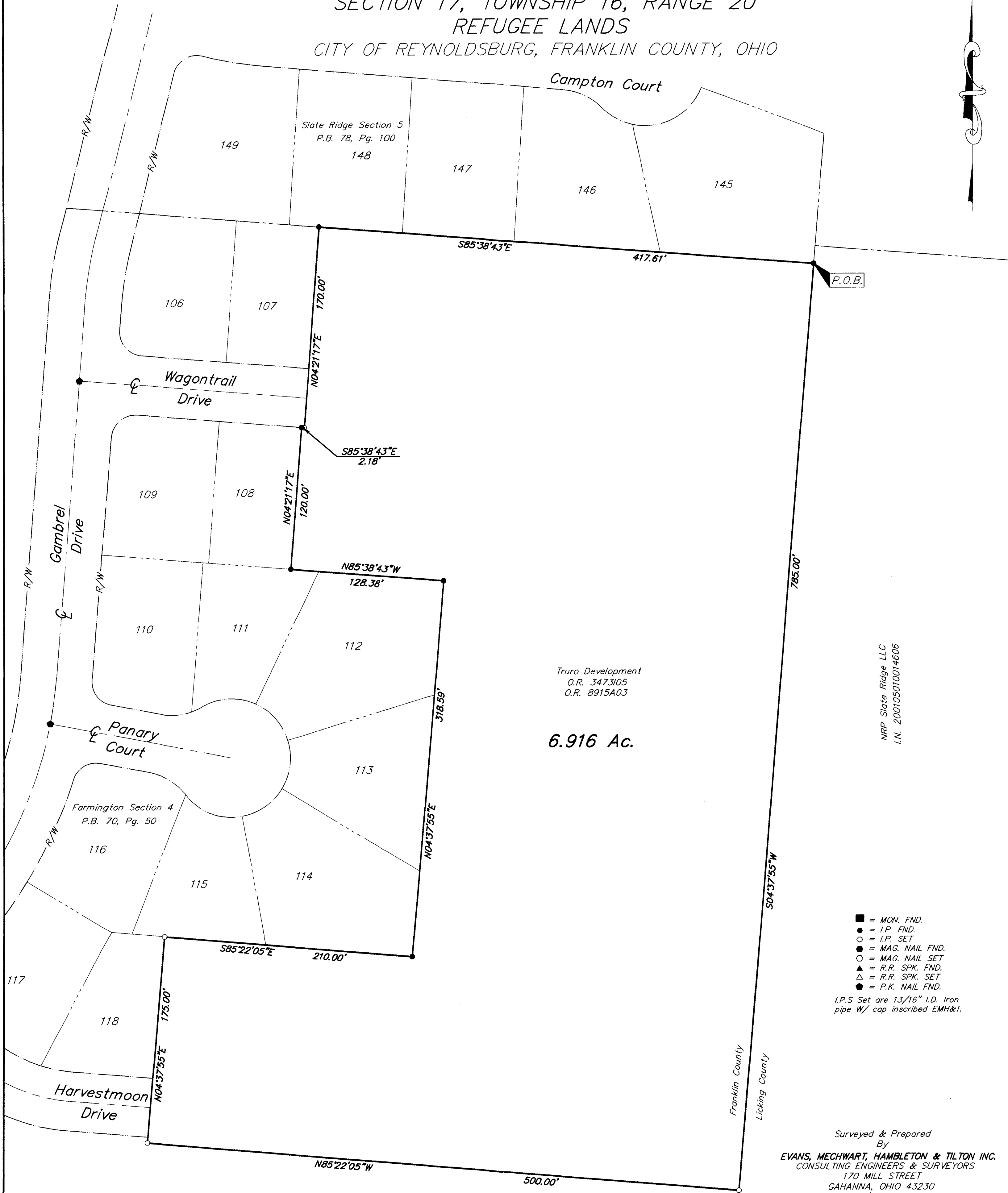


SURVEY OF ACREAGE PARCEL
SECTION 17, TOWNSHIP 16, RANGE 20
REFUGEE LANDS
 CITY OF REYNOLDSBURG, FRANKLIN COUNTY, OHIO



Truro Development
 O.R. 3473105
 O.R. 8915A03

6.916 Ac.

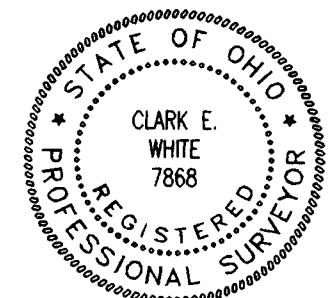
NRP Slate Ridge LLC
 I.N. 200105010014606

- = MON. FND.
 - = I.P. FND.
 - = I.P. SET
 - ⊙ = MAG. NAIL FND.
 - = MAG. NAIL SET
 - ▲ = R.R. SPK. FND.
 - △ = R.R. SPK. SET
 - = P.K. NAIL FND.
- I.P.S Set are 13/16" I.D. Iron pipe w/ cap inscribed EMH&T.

Surveyed & Prepared By
EVANS, MECHWART, HAMBLETON & TILTON INC.
 CONSULTING ENGINEERS & SURVEYORS
 170 MILL STREET
 GAHANNA, OHIO 43230
 614/471-5150

By *Clark E. White* 2/14/02
 Professional Surveyor No. 7868

Scale 1" = 50'
 Revised January 2, 2001
 February 14, 2002



BASIS OF BEARINGS: The bearings shown hereon are based on a portion of Gambrel Drive being North 04° 21' 17" East, as found in the plat of "Farmington Section 4" of record in P.B. 70, Pg. 50, Recorder's Office, Franklin County, Ohio.



C:\PROJECT\20001713.01\DWG\1713BV.DWG - 0 XREFS - PLOTTED BY EMILLER - January 02, 2001 - 2:10 PM