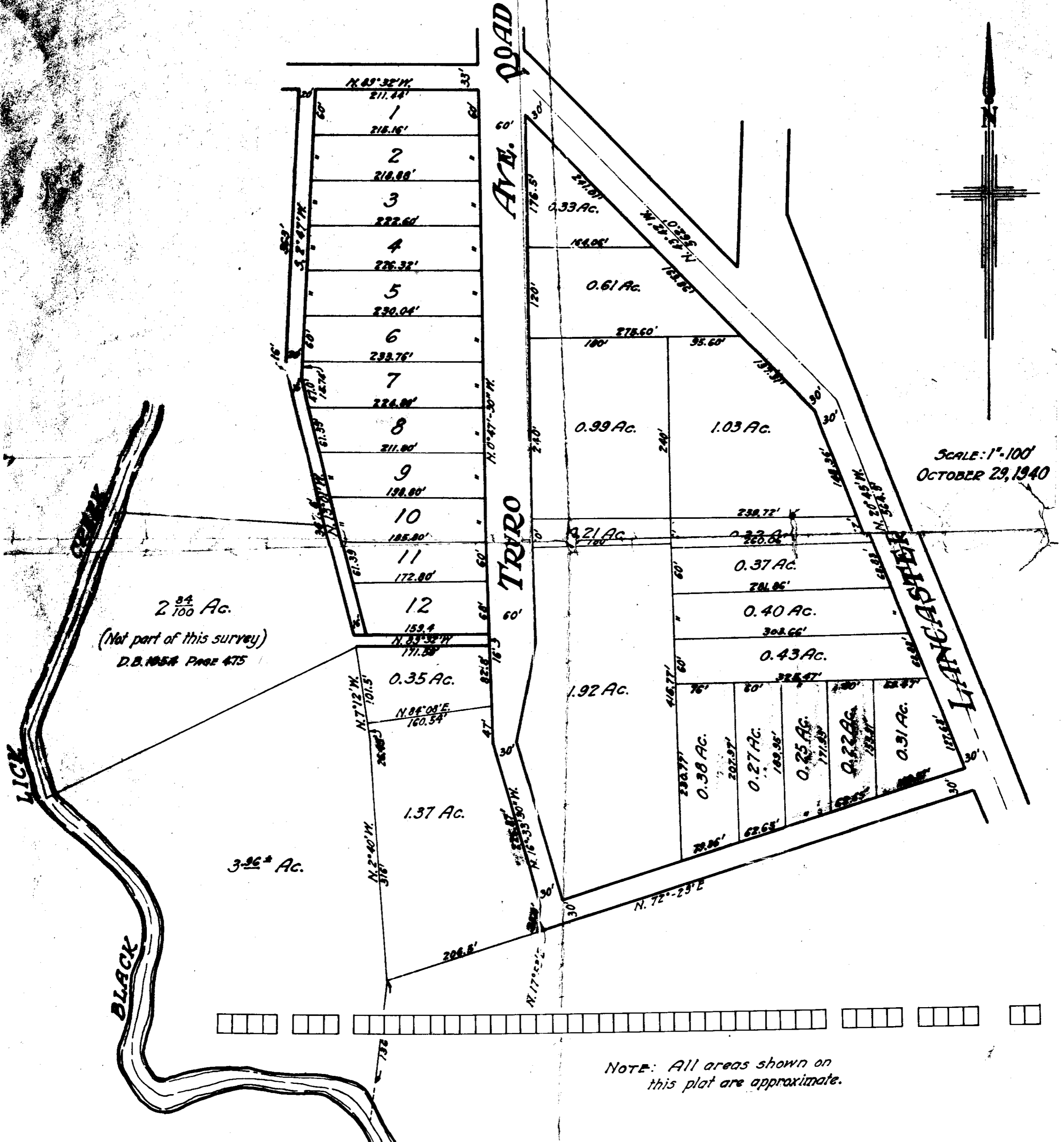


AMENDED PLAT AYERS' ADD'N.

FROM ORIGINAL SURVEY BY JENNINGS & LINDSEY
THE JENNINGS-LAWRENCE CO.
CIVIL & MUNICIPAL ENGINEERS
COLUMBUS, OHIO



SCALE: 1" = 100'
OCTOBER 29, 1940

NOTE: All areas shown on
this plat are approximate.