

Surveyed & Plotted
By
EVANS, MECHWART, HAMBLETON & TILTON, INC.
Consulting Engineers & Surveyors
Columbus, Ohio

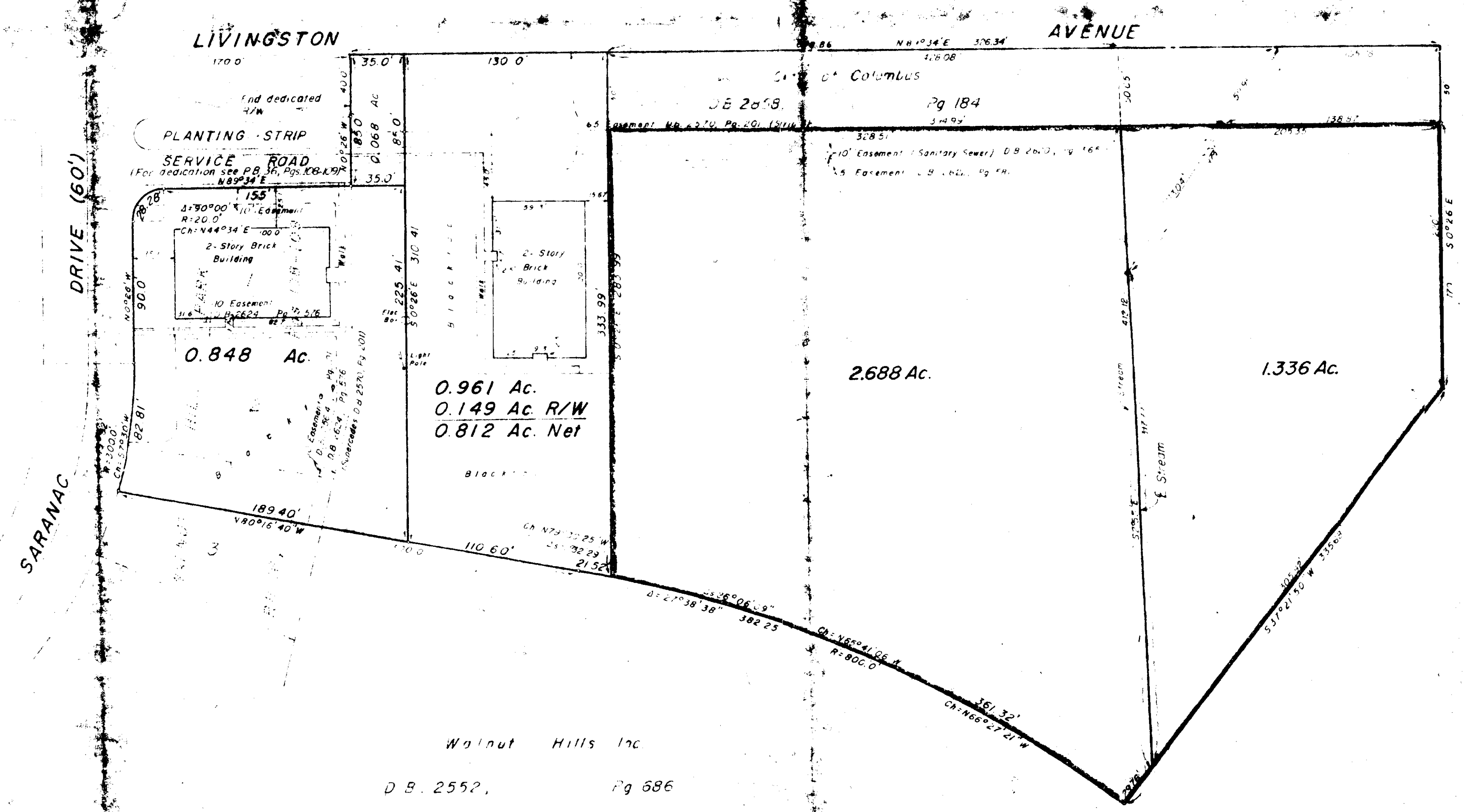
By *E. S. Madley*
Registered Surveyor No. 4965
Scale 1" = 50'
July 3, 1969

• = Iron Pin
Revised July 16, 1969
Revised August 21, 1969
Revised September 26, 1969
Revised October 27, 1969
Revised March 19, 1970
Revised July 3, 1970
Revised September 22, 1970
Revised June 14, 1971
Revised June 21, 1972

SURVEY OF ACREAGE PARCELS
Being all of Lots 1 & 2 and Part of Lot 3
WALNUT HILL PARK
and Located in Section 23, Township 12, Range 21
Refugee Lands
City of Columbus, Franklin County, Ohio

EASEMENTS
Undefined easements granted to Midland Light and Power
D.B. 1920, Page 509
D.B. 2030, Page 19
Granted to Columbus & Southern Ohio Electric Co.
D.B. 2577, Pg. 611 (does not apply)
Granted to ...
D.B. 2605, Pg. 172 (does not apply)
Granted to ...
D.B. 2565, Pg. 223 (does not apply)

EASEMENTS
Blanket easement granted to The Ohio Fuel Gas Co.
D.B. 267, Page 45



Walnut Hills Inc
D.B. 2552, Pg 686

D-104C