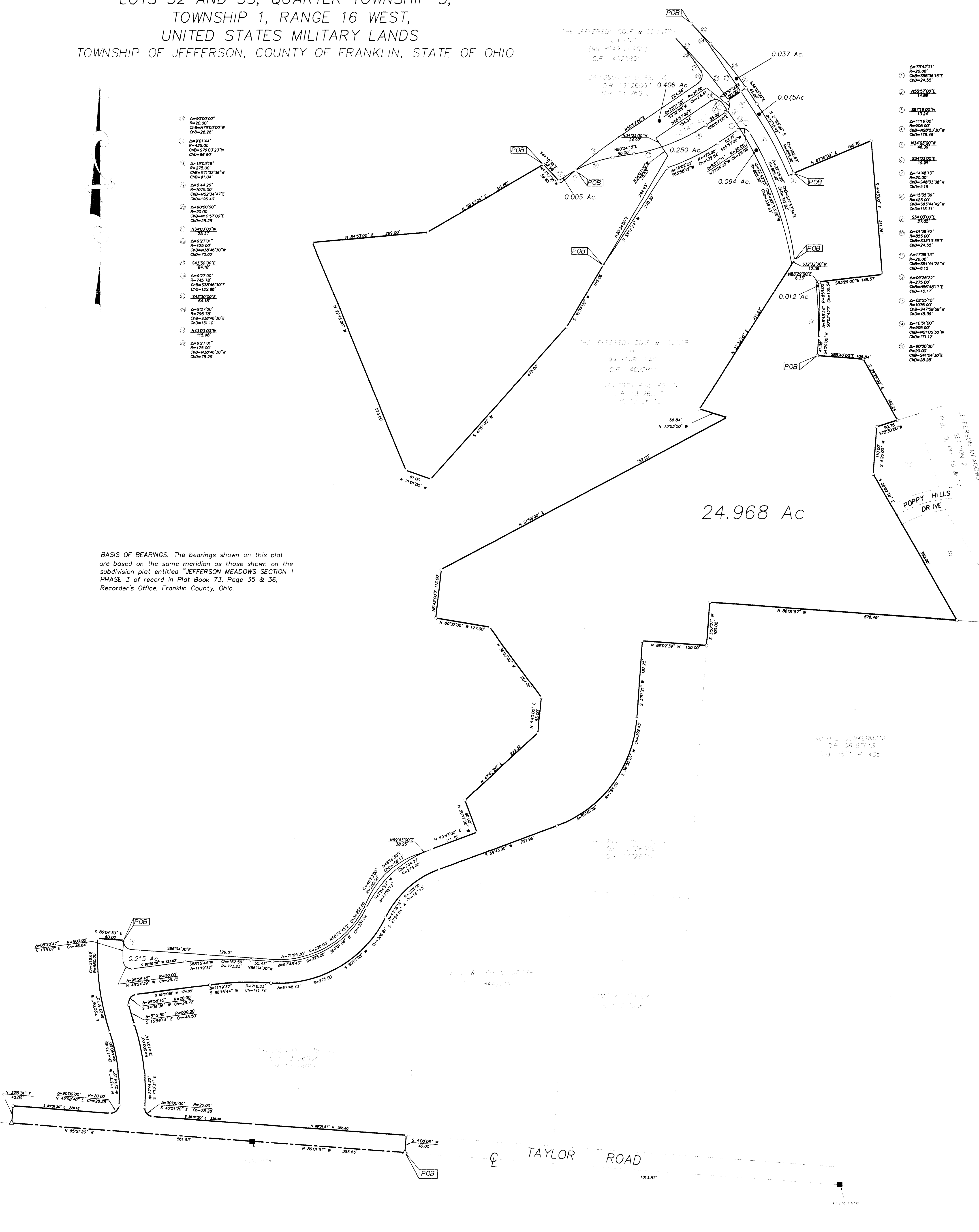


**SURVEY OF ACREAGE PARCELS**  
 LOCATED IN  
 LOTS 32 AND 33, QUARTER TOWNSHIP 3,  
 TOWNSHIP 1, RANGE 16 WEST,  
 UNITED STATES MILITARY LANDS  
 TOWNSHIP OF JEFFERSON, COUNTY OF FRANKLIN, STATE OF OHIO



- ① Δ=90°00'00" R=20.00  
CB=479°03'00"W  
CH=28.28
- ② Δ=90°14'44" R=425.00  
CB=570°03'23"W  
CH=66.90
- ③ Δ=193°17'18" R=1075.00  
CB=57°02'36"W  
CH=91.04
- ④ Δ=8°44'20" R=1075.00  
CB=452°34'47"E  
CH=126.40
- ⑤ Δ=90°00'00" R=20.00  
CB=107°07'00"E  
CH=28.28
- ⑥ N34°00'00"W  
25.37
- ⑦ Δ=97°01'01" R=425.00  
CB=438°46'30"W  
CH=70.02
- ⑧ S43°30'00"E  
64.18
- ⑨ Δ=97°00'00" R=745.78  
CB=538°46'30"E  
CH=122.88
- ⑩ S43°30'00"E  
64.18
- ⑪ Δ=97°00'00" R=795.78  
CB=538°46'30"E  
CH=131.10
- ⑫ N43°00'00"W  
115.90
- ⑬ Δ=97°01'01" R=475.00  
CB=438°46'30"W  
CH=78.26

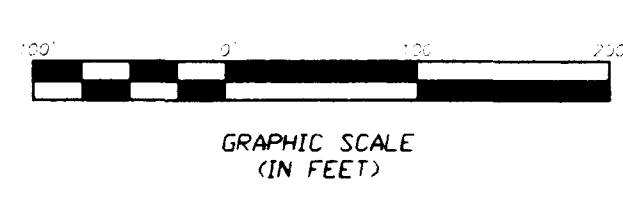
- ① Δ=79°42'31" R=20.00  
CB=583°38'16"E  
CH=24.55
- ② N55°37'00"E  
14.88
- ③ S87°18'00"W  
13.24
- ④ Δ=119°00'00" R=805.00  
CB=428°21'30"W  
CH=178.48
- ⑤ N44°00'00"W  
28.90
- ⑥ S34°33'00"E  
18.98
- ⑦ Δ=14°48'13" R=425.00  
CB=548°13'38"W  
CH=5.15
- ⑧ Δ=152°39'39" R=425.00  
CB=38°44'42"W  
CH=115.31
- ⑨ S24°43'00"E  
27.00
- ⑩ Δ=01°38'42" R=855.00  
CB=531°31'39"E  
CH=24.55
- ⑪ Δ=17°38'13" R=20.00  
CB=38°44'22"W  
CH=6.12
- ⑫ Δ=09°25'22" R=275.00  
CB=547°59'58"W  
CH=45.39
- ⑬ Δ=02°25'10" R=1075.00  
CB=547°59'58"W  
CH=45.39
- ⑭ Δ=103°00'00" R=805.00  
CB=401°00'30"W  
CH=171.12
- ⑮ Δ=80°00'00" R=20.00  
CB=541°04'30"E  
CH=28.28



BASIS OF BEARINGS: The bearings shown on this plat are based on the same meridian as those shown on the subdivision plat entitled "JEFFERSON MEADOWS SECTION 1 PHASE 3 of record in Plat Book 73, Page 35 & 36, Recorder's Office, Franklin County, Ohio.

RUTH E. BUNKERMAN  
 O.P. 0415713  
 D.B. 157 P. 405

- ▲ R.R. Spk. Fnd
  - △ R.R. Spk. Set
  - I.P. Fnd.
  - I.P. Set
- I.P. set are 3/4" O.D. Iron Pin  
 30" long w/cap inscribed EMH&T



SURVEYED & PREPARED BY  
**EMH&T**  
 CONSULTING ENGINEERS & SURVEYORS  
 170 MILL STREET  
 CAHANNA, OHIO 43230  
 (614) 471-5150

By Matthew A. Kirk  
 Professional Surveyor No. 7865

SCALE: 1" = 100' NOVEMBER 6, 1998