

**LINCOLN D. BLACK**  
9<sup>2</sup>7A.  
0.718A. SOUGHT TO BE APPROPRIATED

**VERA FOLEY**  
3<sup>2</sup>2A.  
0.121A. TO BE APP'D.  
12+59.55

**MARY E. WILLIAMS**  
3<sup>0</sup>1A.  
0.180A. TO BE APP'D.  
15+21.35

**LINCOLN D. BLACK**  
3<sup>0</sup>1A.  
0.170A. TO BE APP'D.  
17+67.83

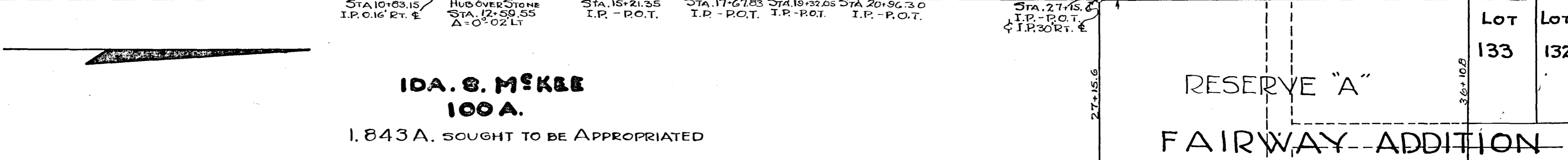
**ETTA WILLIAMS**  
2<sup>0</sup>1A. ET AL.  
0.113A. TO BE APP'D.  
18+32.05

**VERA FOLEY**  
2<sup>0</sup>1A.  
0.113A. TO BE APP'D.  
20+96.30

**MARY E. POOLE**  
2<sup>0</sup>1A.  
0.113A. TO BE APP'D.  
22+60.5

**HARRY B. ALEXANDER**  
22 A.  
1.165 A. SOUGHT TO BE APPROPRIATED

STA. 10+83.15 I.P. 0.16' RT. &  
HUB OVER STONE STA. 12+59.55 Δ=0°-02' LT  
STA. 15+21.35 I.P. - P.O.T.  
STA. 17+67.83 I.P. - P.O.T.  
STA. 19+32.05 I.P. - P.O.T.  
STA. 20+96.30 I.P. - P.O.T.  
STONE STA. 22+60.5 Δ=0°-06' LT.



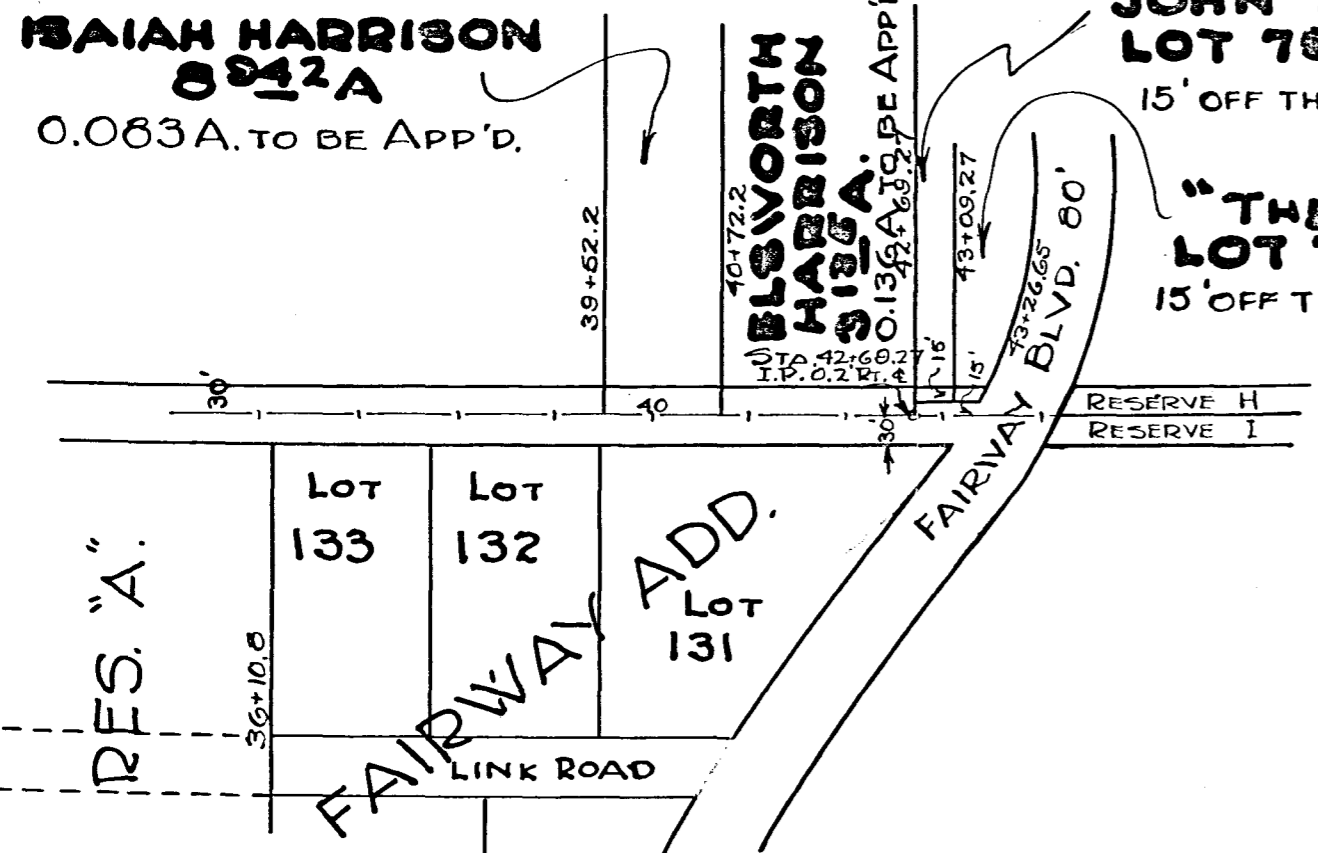
**IDA. S. MCKEE**  
100 A.  
1.843 A. SOUGHT TO BE APPROPRIATED

**SAIAH HARRISON**  
8<sup>2</sup>12A  
0.083A. TO BE APP'D.

**BLSWORTH HARRISON**  
3<sup>1</sup>25A.  
0.136A. TO BE APP'D.

**JOHN H. HARRISON**  
LOT 75 1/2 "FAIRWAY ADD."  
15' OFF THE EAST END OF LOT NO 75 1/2

**"THE FAIRMOR CO"**  
LOT 73 "FAIRWAY ADD."  
15' OFF THE EAST END OF LOT NO 73



ESTABLISHMENT  
**COUNTRY CLUB RD.**  
TRURO TOWNSHIP  
APPROVED BY *Allen P. White*  
FRANKLIN COUNTY ENGINEER  
SCALE 1" = 200 FT.  
DATE *June 9, 1937*