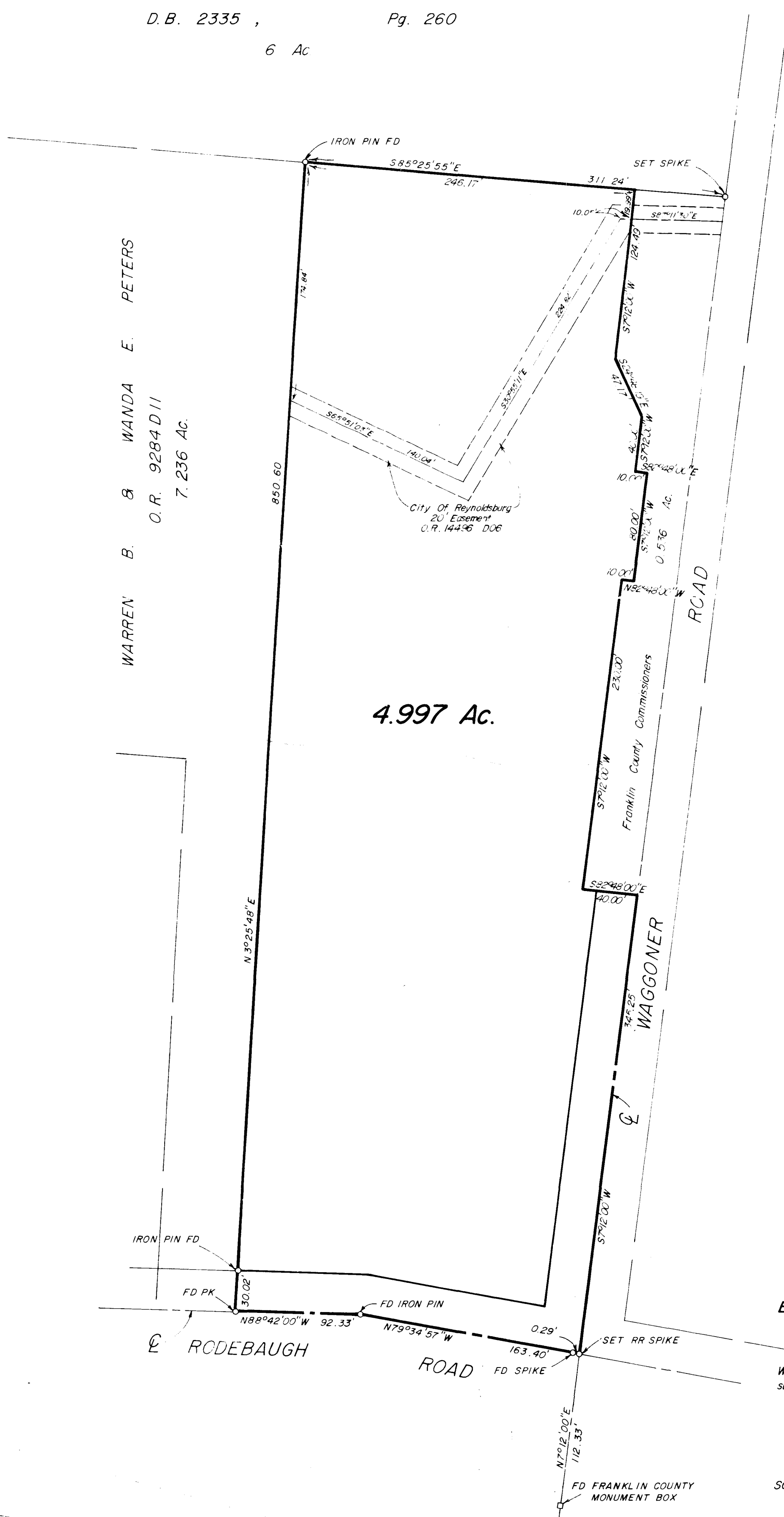
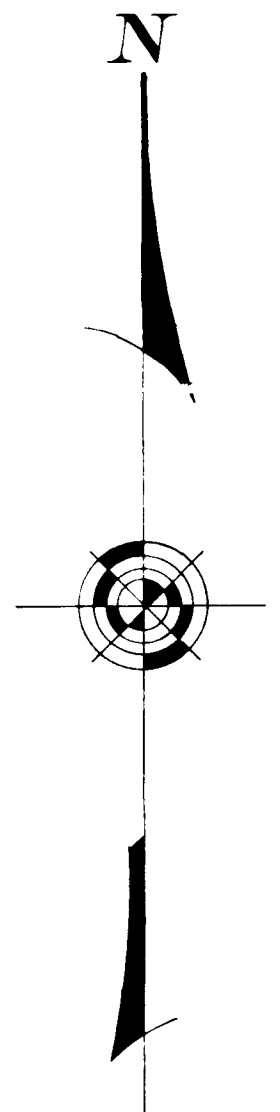


SURVEY OF 4.997 ACRE TRACT
 Located In Half Section 6, Township 16, Range 20
 Refugee Lands
 Truro Township, Franklin County, Ohio

Frederick F. & Lucille A. Grahl
 D.B. 2335 , Pg. 260
 6 Ac



The basis of bearing are base on the same meridian as the 7.236 acre tract of record in O.R. 9284 D11.



SURVEYED & PLATTED
 BY
EVANS, MECHWART, HAMBLETON & TILTON, INC.
 CONSULTING ENGINEERS AND SURVEYORS
 GAHANNA, OHIO

We hereby declare that the foregoing plat was prepared from an actual survey of the premises and shows the location of the boundary.

By Richard J. Tilton
 Registered Surveyor No. 5485

SCALE: 1" = 60'

O = IRON PIN

DECEMBER 7, 1988
 REVISED MARCH 7, 1991